

Viola

String Quartet No 2 in Bb

Jan Ladislav Dussek
(1760-1812)

Based on c.1807 Breitkopf & Härtel edition available as parts at imslp.org, and a manuscript score in Bibliothèque Nationale de France MS9868.

Set in MuseScore 2 in 2016 by Chris Darwin (cjd@cantab.net).

Viola

String Quartet Op 60 no 2 in Bb

Jan Ladislav Dussek (Berlin 1806)

Allegretto ♩ = 60

9

18

24

28

33

40

46

52

59

67

p *dolce*

pp *sotto voce*

f *ff*

sotto voce *p*

ff *dim.* *p* *dolce*

ff *dolce* *p* *pp* *rf*

dim. *sotto voce* *crescendo* *rf* *p*

sotto voce *dolce* *rf* *diminuendo* *sotto voce* *crescendo*

sfz *f*

73 *diminuendo* *pp*

80 *f* *sfz*

84 *diminuendo* *smorzando*

90 *pp*

96 *pp* *p*

103 *sotto voce*

110 *p sotto voce* *pp*

116 *crescendo* *sf*

121 *sotto voce*

127 *f*

131 *p* *mf*

135 *mf* *pp* *sempre diminuendo*

142 *dolce* *p* *dolce* *pp* *f*

149 *pp*

152 *pp*

156 *ff* *sfz* *pp* *dolce*

162 *rf* *diminuendo* *sotto voce* *crescendo* *rf*

169 *p* *smorzando* *dolce* *rf* *diminuendo* *sotto voce*

177 *crescendo* *sfz* *pp* *f*

185 *ff*

192 *p*

198 *dolce* *pp* *sotto voce*

206 *ff*

212 *pp* *sotto voce* *ff*

Adagio pathetico ♩ = 80

9 *f* *pp* *f* *pp*

16 *rf* *diminuendo* *sfz* *sotto voce*

26 *f* *pp* *mp* *solo con espressione*

32 *p* *f* *pp* *sotto voce* *fff*

40 *sfz* *p* *ppp* *p*

46 *rf* *pp* *dolce* *ppp* *sotto voce* *espressione*

52 *p* *ppp* *p*

59 *dolce* *mezzo voce*

62 *crescendo* *f*

66 *f* *pp* *dolce* *sotto voce*

73 *solo con espressione*
mp *p*

79 *f* *pp* *sotto voce*

87 *ff* *p* *f*

95 *p* *f*

102 *sfz* *sfz* *sfz* *sfz* *rf*

109 *pp* *molce* *ppp* *sotto voce* *sotto voce*

118 *pp* *pizz* *col arco* *p*

125 *ff* *p* *sotto voce* *ff*

131 *ff* *pp* *smorzando* *p* *mezzo voce*

136

140 *f* *pp* *ppp* *ppp* *perdendosi*
Seque il Menuetto

Menuetto non presto e semplice ♩ = 120

mezzo voce

p *pp*

8

dolce *rf* *pp*

15

pp *sotto voce*

22

rf *pp*

Detailed description: This block contains the first system of the musical score, measures 1 through 22. The music is in 3/4 time with a key signature of two flats (B-flat and E-flat). The notation includes various musical symbols such as notes, rests, beams, and dynamic markings. The first system (measures 1-8) starts with a diamond-shaped breath mark and includes dynamics *mezzo voce*, *p*, and *pp*. The second system (measures 9-15) begins with a repeat sign and includes *dolce*, *rf*, and *pp*. The third system (measures 16-22) includes *pp* and *sotto voce*, ending with a diamond-shaped breath mark.

Trio Amabile

mezza voce

35

p dolce *ff*

42

pp dolce

48

smorzando

Detailed description: This block contains the second system of the musical score, measures 23 through 48. The Trio Amabile section begins at measure 23. The notation continues with various musical symbols and dynamics. The first system of the Trio (measures 23-35) includes *mezza voce*. The second system (measures 36-42) includes *p dolce* and *ff*. The third system (measures 43-48) includes *pp dolce* and ends with *smorzando* (diminuendo).

Allegro non troppo ♩ = 144

8

15

21

27

35

41

49

57

64

71

p

p

p

f *pp* *sotto voce*

ppp *sfz* *p* *f*

sf *pp*

p *f* *ff*

p *pp*

ff *p*

pp *ppp*

78



86



93



99



104



108



112



118



124



131



136



142



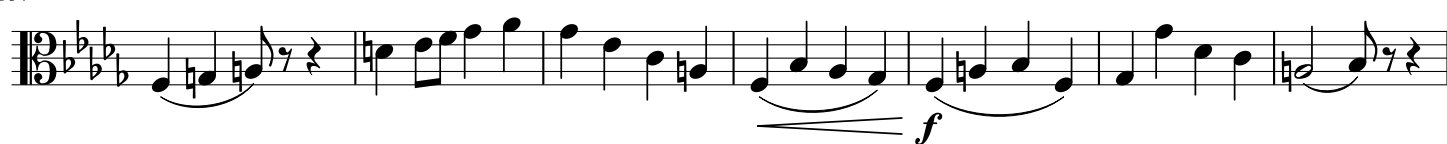
149



157



164



171



179



186



191



196



203



209



214

Maggiore

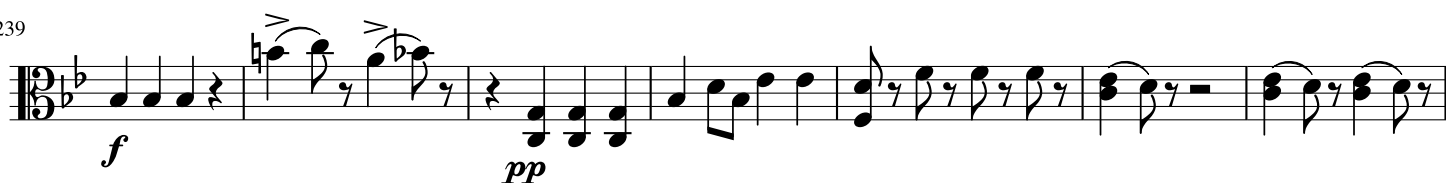
222



231



239



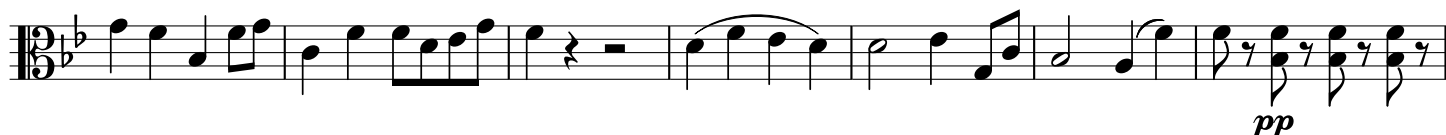
246



254



263



270



276



283

sempre piu forte

290

