



THE WORDS AND MUSIC
DEDICATED TO AND SUNG BY
MADAME MELBA.

THE DAWN.

SONG

WORDS BY

EDWARD TESCHEMACHER

MUSIC BY

GUY D'HARDELLOT.

PRICE 2 $\frac{5}{8}$ NET CASH
40 CENTS (NET CASH)
(NO DISCOUNT)

CHAPPELL & CO. LTD
41 EAST THIRTYFOURTH STREET
NEW YORK

LONDON

TORONTO, 347 YONGE ST.

MELBOURNE

Copyright MCMII. by Chappell & Co.

MAY BE SUNG WITHOUT FEE OR LICENSE

Chappell & Co.

THE DAWN.

SONG.

Words by EDWARD TESCHEMACHER.

Music by GUY d'HARDELLOT.

Andante. M. ♩ = 88

The

Night looked up to the Day

Through a world for - lorn, And the

mf ben legato

cresc.

f
Day leant down..... and they kissed,----- And be -

hold!----- 'twas dawn.

rit. p * *rit. p* *

poco ritenuto *p*

My heart looked up..... to your

mf

mf

heart Through a world for - lorn,----- And

rit. f con dolore

cresc. *rit. f*

your heart leant down and we kissed,— And

rit.

Ped.

love,..... And love..... was

p

dolce legato ritenuto

f

Ped. una corda

Ped.

f allarg.

born.

f

agitato accel.

ff

Ped.

The Dawn.

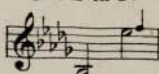
The Night looked up to the Day
Through a world forlorn,
And the Day leant down and they kissed,
And behold! 'twas Dawn.

My heart looked up to your heart
Through a world forlorn,
And your heart leant down and we kissed,
And love was born.

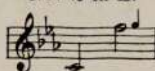
EDWARD TESCHEMACHER.

GUY D'HARDELOT'S LATEST SUCCESSFUL SONG

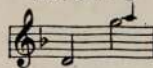
No. 1 in D \flat



No. 2 in E \flat



No. 3 in F



WHEN THE DREAM IS THERE SONG

Words by
EDITH RUTTER-LEATHAM.

Music by
GUY D'HARDELOT.

Slow waltz time.

con tenerezza

VOICE. *mf* *cresc.* *p* 'Tis a
PIANO *mf* *cresc.* *p*

won - der - ful face, with eyes as clear As the
Legato e sostenuto
con due

stars - that burn when the night is here; It is
ff

bright with a smile beyond compare,
But - it's only mine when the dream is there!

'Tis a beautiful world, and soft to tread;
There are wings of the Blessed overhead:

Copyright, MCMXVI, by Chappell & Co., Ltd.

THE LATEST SUCCESSFUL SONG CYCLE

Songs of the Southern Isles

A Cycle of Four Songs

Words by Edward Teschemacher

Music by HERMANN LÖHR

[Keys : Low, Medium and High]

Hermann Löhr, one of the most eminently successful composers of English songs, has written nothing more melodious than these "**Songs of the Southern Isles.**" The reason for his immense popularity is not difficult to find, for it is seldom that a composer who writes so well and so correctly can also make his music attractive to the general public.

The melody of "**Star of the South**" is as natural and ingenuous as a folk-song. "**I Dream of a Garden of Sunshine**" is a beautiful reverie in which the voice part, a simple and tender melody, floats above the piano accompaniment and gives the harmonic picture a golden edge.

"**Cyprian Night Song**" has a tinge of languorous Southern passion. It is tranquil on the surface, but there is longing and an echo of sadness in the heart of the singer.

"**When Spring comes to the Islands**" is redolent of the poetry of May. The rich and rippling accompaniment supplies the accents and the vitality, while the vocal melody wells from the singer like the happy carol of a bird.

The great song-loving public has potent reasons for admiring Hermann Löhr. This new cycle, "**Songs of the Southern Isles**" is one of them.

PRICE, \$1.50 NET, COMPLETE

CHAPPELL & CO., Ltd., 41, East 34th Street, New York

LONDON, TORONTO, AND MELBOURNE