



4686

MUSICALIA



*Reminiscences des Puritains.*

**GRANDE FANTAISIE**

sur des motifs de l'Opéra:

„I. Puritani de V. Bellini“

pour le Violon

avec accompagnement de grand Orchestre  
ou de Piano-forte

composée et dédiée

à Son Excellence

**MONSIEUR LE CHEVALLIER CHARLES D'ENZENDORFER**

Conseiller Intime de S. M. I. R. L'Empereur d'Autriche,  
Commandeur de l'ordre de St. Leopold etc. etc.

par

**CHARLES LIPINSKI**

Premier Violon de S. M. l'Empereur de toutes les Russies et premier  
Maître de Concert actuel de S. M. le Roi de Saxe.

Oeuvr. 28.

Propriété des Editeurs.

Pr. { au Orch. 3 Thlr. — „  
„ Piano 1. „ 4 Gr.

*Leipzig, chez Breitkopf & Härtel.*

6268.

Enregistré aux Archives de l'Union.



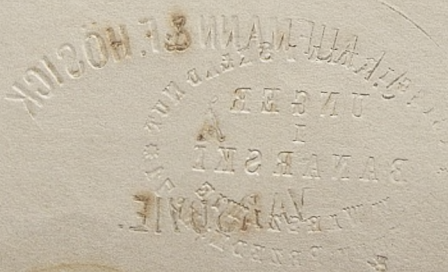
4686

III

Mus-



K 1950 nr 401



VIOLINO PRINCIPALE.

C. Lipinski, Op. 28.

**FANTASIA.** All<sup>o</sup> assai.

Tutti *f* *f*

Musical staff with chords and dynamics. The first measure is marked *f* and *Tutti*. The second measure is marked *f*. The staff contains several chords and some eighth notes.

*p* pizz.

Musical staff with eighth notes and pizzicato. The first measure is marked *p* and *pizz.*. The staff contains eighth notes and some chords.

Andante. *f* *ff* *pp* *ff*

Musical staff with dynamic markings. The first measure is marked *f*. The second measure is marked *ff*. The third measure is marked *pp*. The fourth measure is marked *ff*. The staff contains chords and some eighth notes.

Viola. Basso. pizz.

Musical staff for Viola and Basso. The first measure is marked *pizz.*. The staff contains chords and some eighth notes.

Largo. Viol. 1. Solo. Cantabile con passione.

Musical staff for Violin 1. The first measure is marked *Largo*. The second measure is marked *Solo*. The third measure is marked *Cantabile con passione*. The staff contains eighth notes and some chords.

*p* 1 2 1 2 1

Musical staff with fingerings. The first measure is marked *p*. The second measure is marked 1 2 1 2 1. The staff contains eighth notes and some chords.

1 2 1 1 1 sempre sulla 4<sup>ta</sup> 1 3 4 4 3 2 3 2 3

Musical staff with fingerings and *sempre sulla*. The first measure is marked 1 2. The second measure is marked 1 1 1. The third measure is marked *sempre sulla*. The fourth measure is marked 4<sup>ta</sup>. The fifth measure is marked 1 3 4 4. The sixth measure is marked 3 2 3 2 3. The staff contains eighth notes and some chords.

1 2

Musical staff with fingerings. The first measure is marked 1. The second measure is marked 2. The staff contains eighth notes and some chords.

3<sup>za</sup> 4<sup>ta</sup> 1 *b* *b* 2

Musical staff with fingerings and accidentals. The first measure is marked 3<sup>za</sup>. The second measure is marked 4<sup>ta</sup>. The third measure is marked 1. The fourth measure is marked *b* *b* 2. The staff contains eighth notes and some chords.

*pp* pizz. arco.

Musical staff with dynamics and articulation. The first measure is marked *pp*. The second measure is marked *pizz.*. The third measure is marked *arco*. The staff contains chords and some eighth notes.

*pp* pizz. arco.

Musical staff with dynamics and articulation. The first measure is marked *pp*. The second measure is marked *pizz.*. The third measure is marked *arco*. The staff contains chords and some eighth notes.

VIOLINO PRINCIPALE:

Sibl. Jag.

ROMANZA. Andante. Sulla 3<sup>za</sup>

Viol. 1.

The musical score for Violino Principale, Romanza. Andante. Sulla 3<sup>za</sup>. The score is written for Violin 1 and includes various performance instructions and dynamics. The first staff is the main melody. The second staff includes 'a Tempo.' and 'rallent.' markings, with fingerings (2 1 2, 2 1, 1 2 2 3 2) and dynamics (f). The third staff is marked 'Solo.' and 'pp'. The fourth and fifth staves are for 'Flautini loco.' with various dynamics (f, sf) and fingerings. The sixth staff is marked 'Basso.' and 'Tutti.' with 'pp'. The seventh staff is marked 'Solo' with '1a' and '3za' positions, and dynamics (pp, mf). The eighth staff has dynamics (pf, p, f) and 'Tutti.' with 'sf'. The ninth staff has dynamics (sf, p, p, p, pp). The tenth staff is marked 'Solo. leggiero.' and 'pp'.

VIOLINO PRINCIPALE.

*f*

*accelerando.*

*a Tempo.*

Cadenza.

*f f f f p f*

*accelerando.*

*mf f*

*p ff*

*tr loco.*

*pp f*

*pp*

VIOLINO PRINCIPALE.

All<sup>o</sup> moderato.

Cor. Tutti.

Largo. cantabile. Solo.

VIOLINO PRINCIPALE.

All<sup>o</sup> moderato.

Tutti.

Tutti.

VIOLINO-PRINCIPALE.

Solo.

2

Tutti.

p

ff

Solo.

a Tempo.

pp

sf

decresc.

Tutti.

ff

Solo.

Tutti.

f

Solo.



VIOLINO PRINCIPALE.



