

## General notes

There are three movements, each roughly the same length, each involving a different combination of instruments:

I. Piano and Bass

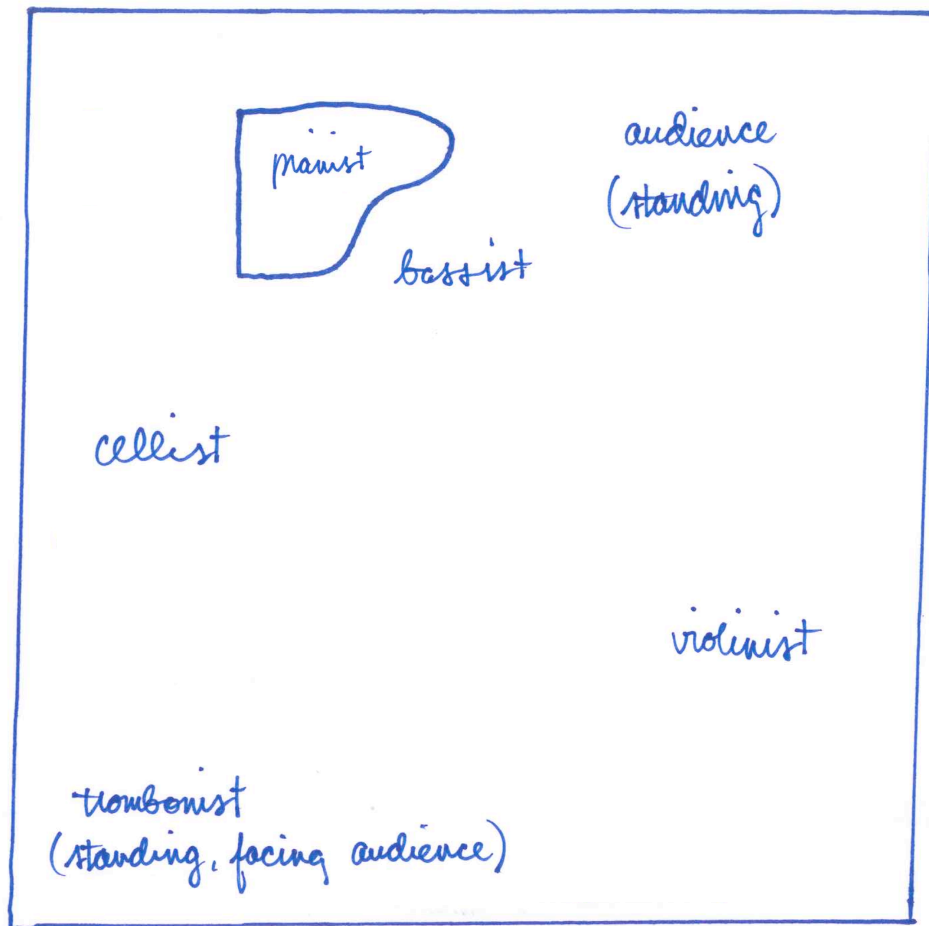
II. Trombone solo

III. Piano, cello, violin, and trombone

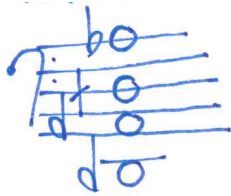
f is a quarter-sharp; d is a quarter-flat.

Duration: 10 min.

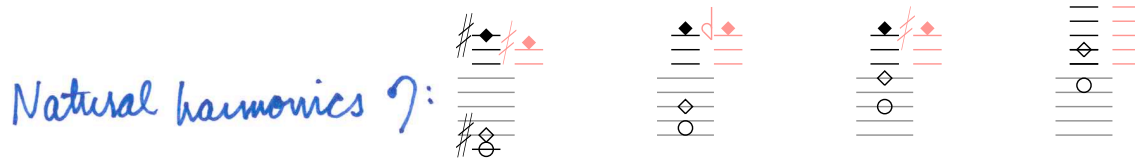
## Positioning of the musicians and the audience



The bassist tunes to these pitches:



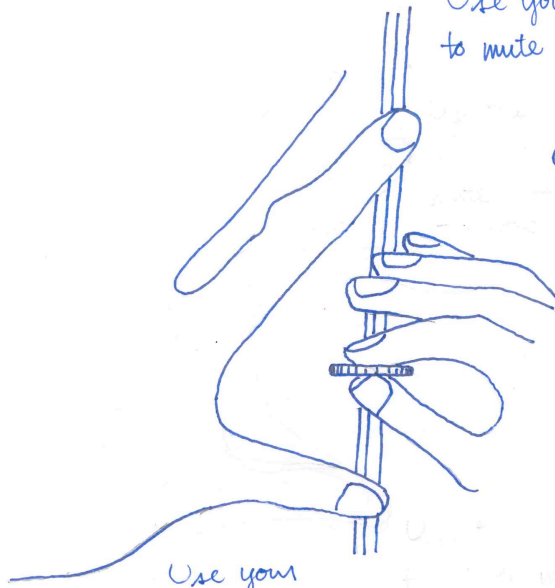
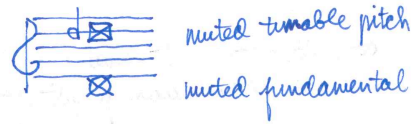
The bassist plays these 12 different sounds over the course of the piece:



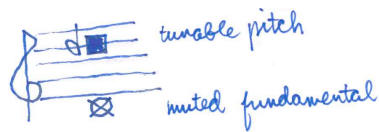
The black notes show which position to play, and the red notes show what you should hear

The pianist plays inside the piano with a ridged coin.

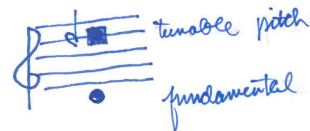
Use your thumb and index finger to mute both pitches.



Use your thumb to mute the fundamental.

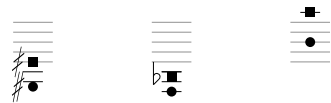


Rotate your wrist to grate the coin on the piano strings you should hear two pitches: the pitch of the string fundamental, which is fixed, and a pitch that you can tune by moving the coin towards you or away from you. E.g.:

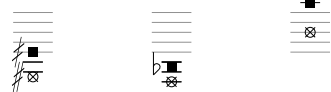


The pianist plays these 12 different sounds over the course of the piece:

No muting



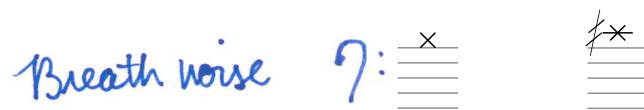
Mute the fundamental



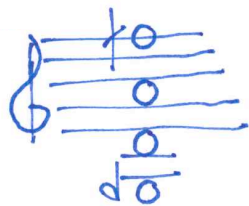
Mute both the fundamental and the tunable pitch



The trombonist plays these six different sounds over the course of the piece:



The violinist tunes to these pitches:



The violinist plays these 12 different sounds over the course of the piece:

Open strings

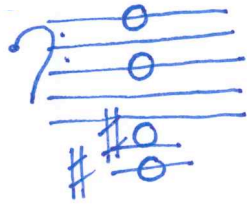
Natural harmonics

Stopped pitches (ord.)

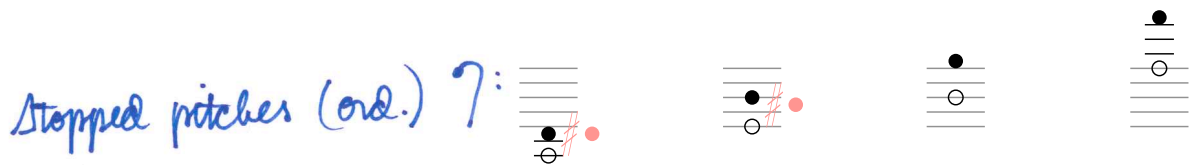
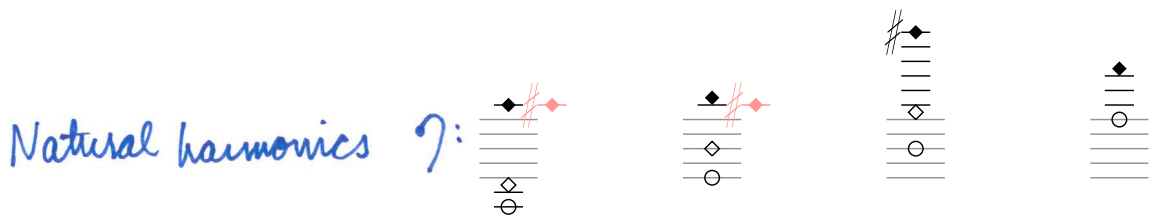
The diagrams are arranged in a grid. Each row represents a different sound type. Each diagram shows a violin staff with a black note on a string and a red note on the same string. The first three diagrams in each row show a black note on a string with a red note on the same string. The fourth diagram in each row shows a black note on a string with a red note on a different string. The diagrams are arranged in a grid.

The black notes show which position to play, and the red notes show what you should hear.

The cellist tunes to these pitches:



The cellist plays these 12 different sounds over the course of the piece:



The black notes show which position to play, and the red notes show what you should hear.

▼

CB

PNO

▼

CB

PNO

▼

CB

PNO



▼

CB

PNO

|||

▼

CB

PNO

|||

▼

CB

PNO

|||

CB

PNO

|||

CB

PNO

|||

CB

PNO

|||

CB

PNO

|||

CB

PNO

|||

CB

PNO

|||





Score for the first system, featuring four staves: TB, VN, VC, and PNO. The TB staff uses a bass clef and contains a black dot on the first line, an 'x' on the second line, and a square with a slash on the third line. The VN staff uses a treble clef and contains a black dot on the first line, a red diamond on the second line, and a black dot on the third line. The VC staff uses a bass clef and contains a black dot on the first line, a black diamond on the second line with a red slash and diamond, and a black dot on the third line with a red slash and diamond. The PNO staff uses a treble clef and contains a square with a slash on the first line, a square with a slash on the second line, and a black dot on the third line. A dashed line is positioned above the TB staff, and a solid line is positioned below the VC staff.

Score for the second system, featuring five staves: TB, VN, VC, and PNO. The TB staff uses a bass clef and contains a black dot on the first line, an 'x' on the second line, and a square with a slash on the third line. The VN staff uses a treble clef and contains a black dot on the first line, a red diamond on the second line, and a black dot on the third line. The VC staff uses a bass clef and contains a black dot on the first line with a red slash and diamond, a black diamond on the second line with a red slash and diamond, a black dot on the third line, a black diamond on the fourth line with a red slash and diamond, and a black dot on the fifth line. The PNO staff uses a treble clef and contains a square with a slash on the first line, a square with a slash on the second line, a square with a slash on the third line, a square with a slash on the fourth line, and a square with a slash on the fifth line. A dashed line is positioned above the TB staff, and a solid line is positioned below the VC staff.

TB 
  
 V 
  
 VC 
  
 PNO

TB 
  
 V 
  
 VC 
  
 PNO

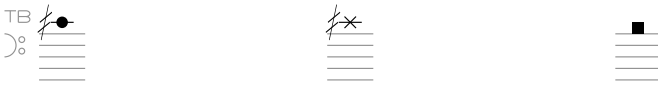
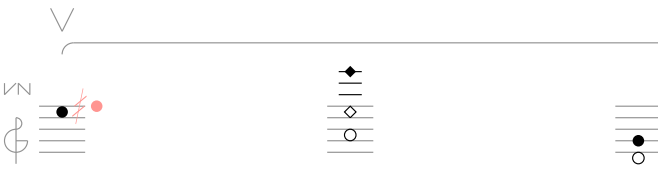
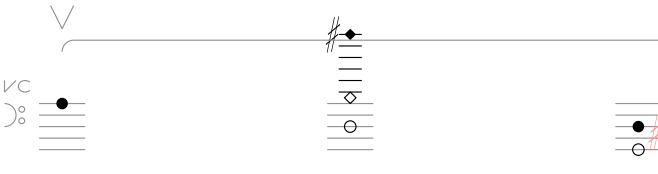
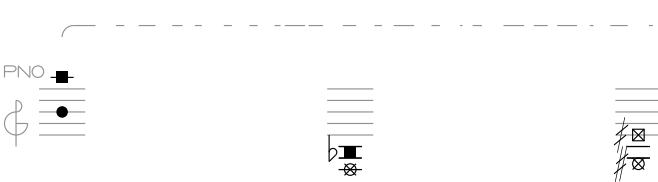

Score for the first system, featuring four staves: TB, VN, VC, and PNO. The TB staff contains a square, an 'x', and a dot. The VN staff contains a diamond, a circle, and a dot. The VC staff contains a circle, a diamond, and a dot. The PNO staff contains a square, a circle, and a dot. The system is enclosed in a dashed line with a comma at the end.

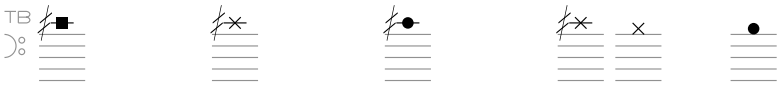
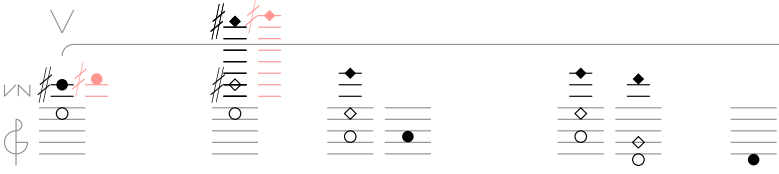
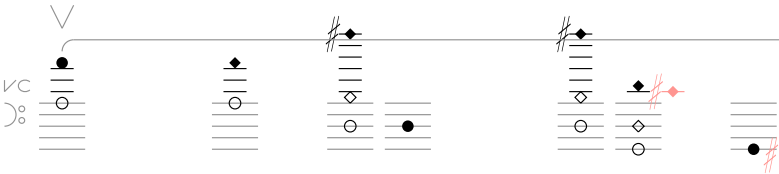
Score for the second system, featuring four staves: TB, VN, VC, and PNO. The TB staff contains a square, an 'x', and a dot. The VN staff contains a diamond, a circle, and a dot. The VC staff contains a circle, a diamond, and a dot. The PNO staff contains a square, a circle, and a dot. The system is enclosed in a dashed line with a comma at the end.



TB 
  
 VC 
  
 PNO

TB 
  
 VC 
  
 PNO

TB 
  
 V 
  
 VC 
  
 PNO 
  


TB 
  
 V 
  
 VC 
  
 PNO 