



Double Bass

# 音樂短劇-童話

Cheng-Shiun

♩ = 80

4/4 time signature. Measure 1: Bass clef, key signature of one flat. Notes: G2, A2, B2, C3. Measure 2: G2, A2, B2, C3. Measure 3: D3, E3, F3, G3. Measure 4: A3, B3, C4, D4. Measure 5: E4, F4, G4, A4. Measure 6: B4, C5, D5, E5. Measure 7: F5, G5, A5, B5. Measure 8: C6, D6, E6, F6. Measure 9: G6, A6, B6, C7. Measure 10: D7, E7, F7, G7. Measure 11: A7, B7, C8, D8. Measure 12: E8, F8, G8, A8. Measure 13: B8, C9, D9, E9. Measure 14: F9, G9, A9, B9. Measure 15: C10, D10, E10, F10. Measure 16: G10, A10, B10, C11. Measure 17: D11, E11, F11, G11. Measure 18: A11, B11, C12, D12. Measure 19: E12, F12, G12, A12. Measure 20: B12, C13, D13, E13. Measure 21: F13, G13, A13, B13. Measure 22: C14, D14, E14, F14. Measure 23: G14, A14, B14, C15. Measure 24: D15, E15, F15, G15. Measure 25: A15, B15, C16, D16. Measure 26: E16, F16, G16, A16. Measure 27: B16, C17, D17, E17. Measure 28: F17, G17, A17, B17. Measure 29: C18, D18, E18, F18. Measure 30: G18, A18, B18, C19. Measure 31: D19, E19, F19, G19. Measure 32: A19, B19, C20, D20. Measure 33: E20, F20, G20, A20. Measure 34: B20, C21, D21, E21. Measure 35: F21, G21, A21, B21. Measure 36: C22, D22, E22, F22. Measure 37: G22, A22, B22, C23. Measure 38: D23, E23, F23, G23. Measure 39: A23, B23, C24, D24. Measure 40: E24, F24, G24, A24. Measure 41: B24, C25, D25, E25. Measure 42: F25, G25, A25, B25. Measure 43: C26, D26, E26, F26. Measure 44: G26, A26, B26, C27. Measure 45: D27, E27, F27, G27. Measure 46: A27, B27, C28, D28. Measure 47: E28, F28, G28, A28. Measure 48: B28, C29, D29, E29. Measure 49: F29, G29, A29, B29. Measure 50: C30, D30, E30, F30. Measure 51: G30, A30, B30, C31. Measure 52: D31, E31, F31, G31. Measure 53: A31, B31, C32, D32. Measure 54: E32, F32, G32, A32. Measure 55: B32, C33, D33, E33. Measure 56: F33, G33, A33, B33. Measure 57: C34, D34, E34, F34. Measure 58: G34, A34, B34, C35. Measure 59: D35, E35, F35, G35. Measure 60: A35, B35, C36, D36. Measure 61: E36, F36, G36, A36. Measure 62: B36, C37, D37, E37. Measure 63: F37, G37, A37, B37. Measure 64: C38, D38, E38, F38. Measure 65: G38, A38, B38, C39. Measure 66: D39, E39, F39, G39. Measure 67: A39, B39, C40, D40. Measure 68: E40, F40, G40, A40. Measure 69: B40, C41, D41, E41. Measure 70: F41, G41, A41, B41. Measure 71: C42, D42, E42, F42. Measure 72: G42, A42, B42, C43. Measure 73: D43, E43, F43, G43. Measure 74: A43, B43, C44, D44. Measure 75: E44, F44, G44, A44. Measure 76: B44, C45, D45, E45. Measure 77: F45, G45, A45, B45. Measure 78: C46, D46, E46, F46. Measure 79: G46, A46, B46, C47. Measure 80: D47, E47, F47, G47. Measure 81: A47, B47, C48, D48. Measure 82: E48, F48, G48, A48. Measure 83: B48, C49, D49, E49. Measure 84: F49, G49, A49, B49. Measure 85: C50, D50, E50, F50. Measure 86: G50, A50, B50, C51. Measure 87: D51, E51, F51, G51. Measure 88: A51, B51, C52, D52. Measure 89: E52, F52, G52, A52. Measure 90: B52, C53, D53, E53. Measure 91: F53, G53, A53, B53. Measure 92: C54, D54, E54, F54. Measure 93: G54, A54, B54, C55. Measure 94: D55, E55, F55, G55. Measure 95: A55, B55, C56, D56. Measure 96: E56, F56, G56, A56. Measure 97: B56, C57, D57, E57. Measure 98: F57, G57, A57, B57. Measure 99: C58, D58, E58, F58. Measure 100: G58, A58, B58, C59. Measure 101: D59, E59, F59, G59. Measure 102: A59, B59, C60, D60. Measure 103: E60, F60, G60, A60. Measure 104: B60, C61, D61, E61. Measure 105: F61, G61, A61, B61. Measure 106: C62, D62, E62, F62. Measure 107: G62, A62, B62, C63. Measure 108: D63, E63, F63, G63. Measure 109: A63, B63, C64, D64. Measure 110: E64, F64, G64, A64. Measure 111: B64, C65, D65, E65. Measure 112: F65, G65, A65, B65. Measure 113: C66, D66, E66, F66. Measure 114: G66, A66, B66, C67. Measure 115: D67, E67, F67, G67. Measure 116: A67, B67, C68, D68. Measure 117: E68, F68, G68, A68. Measure 118: B68, C69, D69, E69. Measure 119: F69, G69, A69, B69. Measure 120: C70, D70, E70, F70. Measure 121: G70, A70, B70, C71. Measure 122: D71, E71, F71, G71. Measure 123: A71, B71, C72, D72. Measure 124: E72, F72, G72, A72. Measure 125: B72, C73, D73, E73. Measure 126: F73, G73, A73, B73. Measure 127: C74, D74, E74, F74. Measure 128: G74, A74, B74, C75. Measure 129: D75, E75, F75, G75. Measure 130: A75, B75, C76, D76. Measure 131: E76, F76, G76, A76. Measure 132: B76, C77, D77, E77. Measure 133: F77, G77, A77, B77. Measure 134: C78, D78, E78, F78. Measure 135: G78, A78, B78, C79. Measure 136: D79, E79, F79, G79. Measure 137: A79, B79, C80, D80. Measure 138: E80, F80, G80, A80. Measure 139: B80, C81, D81, E81. Measure 140: F81, G81, A81, B81. Measure 141: C82, D82, E82, F82. Measure 142: G82, A82, B82, C83. Measure 143: D83, E83, F83, G83. Measure 144: A83, B83, C84, D84. Measure 145: E84, F84, G84, A84. Measure 146: B84, C85, D85, E85. Measure 147: F85, G85, A85, B85. Measure 148: C86, D86, E86, F86. Measure 149: G86, A86, B86, C87. Measure 150: D87, E87, F87, G87. Measure 151: A87, B87, C88, D88. Measure 152: E88, F88, G88, A88. Measure 153: B88, C89, D89, E89. Measure 154: F89, G89, A89, B89. Measure 155: C90, D90, E90, F90. Measure 156: G90, A90, B90, C91. Measure 157: D91, E91, F91, G91. Measure 158: A91, B91, C92, D92. Measure 159: E92, F92, G92, A92. Measure 160: B92, C93, D93, E93. Measure 161: F93, G93, A93, B93. Measure 162: C94, D94, E94, F94. Measure 163: G94, A94, B94, C95. Measure 164: D95, E95, F95, G95. Measure 165: A95, B95, C96, D96. Measure 166: E96, F96, G96, A96. Measure 167: B96, C97, D97, E97. Measure 168: F97, G97, A97, B97. Measure 169: C98, D98, E98, F98. Measure 170: G98, A98, B98, C99. Measure 171: D99, E99, F99, G99. Measure 172: A99, B99, C100, D100. Measure 173: E100, F100, G100, A100. Measure 174: B100, C101, D101, E101. Measure 175: F101, G101, A101, B101. Measure 176: C102, D102, E102, F102. Measure 177: G102, A102, B102, C103. Measure 178: D103, E103, F103, G103. Measure 179: A103, B103, C104, D104. Measure 180: E104, F104, G104, A104. Measure 181: B104, C105, D105, E105. Measure 182: F105, G105, A105, B105. Measure 183: C106, D106, E106, F106. Measure 184: G106, A106, B106, C107. Measure 185: D107, E107, F107, G107. Measure 186: A107, B107, C108, D108. Measure 187: E108, F108, G108, A108. Measure 188: B108, C109, D109, E109. Measure 189: F109, G109, A109, B109. Measure 190: C110, D110, E110, F110. Measure 191: G110, A110, B110, C111. Measure 192: D111, E111, F111, G111. Measure 193: A111, B111, C112, D112. Measure 194: E112, F112, G112, A112. Measure 195: B112, C113, D113, E113. Measure 196: F113, G113, A113, B113. Measure 197: C114, D114, E114, F114. Measure 198: G114, A114, B114, C115. Measure 199: D115, E115, F115, G115. Measure 200: A115, B115, C116, D116. Measure 201: E116, F116, G116, A116. Measure 202: B116, C117, D117, E117. Measure 203: F117, G117, A117, B117. Measure 204: C118, D118, E118, F118. Measure 205: G118, A118, B118, C119. Measure 206: D119, E119, F119, G119. Measure 207: A119, B119, C120, D120. Measure 208: E120, F120, G120, A120. Measure 209: B120, C121, D121, E121. Measure 210: F121, G121, A121, B121. Measure 211: C122, D122, E122, F122. Measure 212: G122, A122, B122, C123. Measure 213: D123, E123, F123, G123. Measure 214: A123, B123, C124, D124. Measure 215: E124, F124, G124, A124. Measure 216: B124, C125, D125, E125. Measure 217: F125, G125, A125, B125. Measure 218: C126, D126, E126, F126. Measure 219: G126, A126, B126, C127. Measure 220: D127, E127, F127, G127. Measure 221: A127, B127, C128, D128. Measure 222: E128, F128, G128, A128. Measure 223: B128, C129, D129, E129. Measure 224: F129, G129, A129, B129. Measure 225: C130, D130, E130, F130. Measure 226: G130, A130, B130, C131. Measure 227: D131, E131, F131, G131. Measure 228: A131, B131, C132, D132. Measure 229: E132, F132, G132, A132. Measure 230: B132, C133, D133, E133. Measure 231: F133, G133, A133, B133. Measure 232: C134, D134, E134, F134. Measure 233: G134, A134, B134, C135. Measure 234: D135, E135, F135, G135. Measure 235: A135, B135, C136, D136. Measure 236: E136, F136, G136, A136. Measure 237: B136, C137, D137, E137. Measure 238: F137, G137, A137, B137. Measure 239: C138, D138, E138, F138. Measure 240: G138, A138, B138, C139. Measure 241: D139, E139, F139, G139. Measure 242: A139, B139, C140, D140. Measure 243: E140, F140, G140, A140. Measure 244: B140, C141, D141, E141. Measure 245: F141, G141, A141, B141. Measure 246: C142, D142, E142, F142. Measure 247: G142, A142, B142, C143. Measure 248: D143, E143, F143, G143. Measure 249: A143, B143, C144, D144. Measure 250: E144, F144, G144, A144. Measure 251: B144, C145, D145, E145. Measure 252: F145, G145, A145, B145. Measure 253: C146, D146, E146, F146. Measure 254: G146, A146, B146, C147. Measure 255: D147, E147, F147, G147. Measure 256: A147, B147, C148, D148. Measure 257: E148, F148, G148, A148. Measure 258: B148, C149, D149, E149. Measure 259: F149, G149, A149, B149. Measure 260: C150, D150, E150, F150. Measure 261: G150, A150, B150, C151. Measure 262: D151, E151, F151, G151. Measure 263: A151, B151, C152, D152. Measure 264: E152, F152, G152, A152. Measure 265: B152, C153, D153, E153. Measure 266: F153, G153, A153, B153. Measure 267: C154, D154, E154, F154. Measure 268: G154, A154, B154, C155. Measure 269: D155, E155, F155, G155. Measure 270: A155, B155, C156, D156. Measure 271: E156, F156, G156, A156. Measure 272: B156, C157, D157, E157. Measure 273: F157, G157, A157, B157. Measure 274: C158, D158, E158, F158. Measure 275: G158, A158, B158, C159. Measure 276: D159, E159, F159, G159. Measure 277: A159, B159, C160, D160. Measure 278: E160, F160, G160, A160. Measure 279: B160, C161, D161, E161. Measure 280: F161, G161, A161, B161. Measure 281: C162, D162, E162, F162. Measure 282: G162, A162, B162, C163. Measure 283: D163, E163, F163, G163. Measure 284: A163, B163, C164, D164. Measure 285: E164, F164, G164, A164. Measure 286: B164, C165, D165, E165. Measure 287: F165, G165, A165, B165. Measure 288: C166, D166, E166, F166. Measure 289: G166, A166, B166, C167. Measure 290: D167, E167, F167, G167. Measure 291: A167, B167, C168, D168. Measure 292: E168, F168, G168, A168. Measure 293: B168, C169, D169, E169. Measure 294: F169, G169, A169, B169. Measure 295: C170, D170, E170, F170. Measure 296: G170, A170, B170, C171. Measure 297: D171, E171, F171, G171. Measure 298: A171, B171, C172, D172. Measure 299: E172, F172, G172, A172. Measure 300: B172, C173, D173, E173. Measure 301: F173, G173, A173, B173. Measure 302: C174, D174, E174, F174. Measure 303: G174, A174, B174, C175. Measure 304: D175, E175, F175, G175. Measure 305: A175, B175, C176, D176. Measure 306: E176, F176, G176, A176. Measure 307: B176, C177, D177, E177. Measure 308: F177, G177, A177, B177. Measure 309: C178, D178, E178, F178. Measure 310: G178, A178, B178, C179. Measure 311: D179, E179, F179, G179. Measure 312: A179, B179, C180, D180. Measure 313: E180, F180, G180, A180. Measure 314: B180, C181, D181, E181. Measure 315: F181, G181, A181, B181. Measure 316: C182, D182, E182, F182. Measure 317: G182, A182, B182, C183. Measure 318: D183, E183, F183, G183. Measure 319: A183, B183, C184, D184. Measure 320: E184, F184, G184, A184. Measure 321: B184, C185, D185, E185. Measure 322: F185, G185, A185, B185. Measure 323: C186, D186, E186, F186. Measure 324: G186, A186, B186, C187. Measure 325: D187, E187, F187, G187. Measure 326: A187, B187, C188, D188. Measure 327: E188, F188, G188, A188. Measure 328: B188, C189, D189, E189. Measure 329: F189, G189, A189, B189. Measure 330: C190, D190, E190, F190. Measure 331: G190, A190, B190, C191. Measure 332: D191, E191, F191, G191. Measure 333: A191, B191, C192, D192. Measure 334: E192, F192, G192, A192. Measure 335: B192, C193, D193, E193. Measure 336: F193, G193, A193, B193. Measure 337: C194, D194, E194, F194. Measure 338: G194, A194, B194, C195. Measure 339: D195, E195, F195, G195. Measure 340: A195, B195, C196, D196. Measure 341: E196, F196, G196, A196. Measure 342: B196, C197, D197, E197. Measure 343: F197, G197, A197, B197. Measure 344: C198, D198, E198, F198. Measure 345: G198, A198, B198, C199. Measure 346: D199, E199, F199, G199. Measure 347: A199, B199, C200, D200. Measure 348: E200, F200, G200, A200. Measure 349: B200, C201, D201, E201. Measure 350: F201, G201, A201, B201. Measure 351: C202, D202, E202, F202. Measure 352: G202, A202, B202, C203. Measure 353: D203, E203, F203, G203. Measure 354: A203, B203, C204, D204. Measure 355: E204, F204, G204, A204. Measure 356: B204, C205, D205, E205. Measure 357: F205, G205, A205, B205. Measure 358: C206, D206, E206, F206. Measure 359: G206, A206, B206, C207. Measure 360: D207, E207, F207, G207. Measure 361: A207, B207, C208, D208. Measure 362: E208, F208, G208, A208. Measure 363: B208, C209, D209, E209. Measure 364: F209, G209, A209, B209. Measure 365: C210, D210, E210, F210. Measure 366: G210, A210, B210, C211. Measure 367: D211, E211, F211, G211. Measure 368: A211, B211, C212, D212. Measure 369: E212, F212, G212, A212. Measure 370: B212, C213, D213, E213. Measure 371: F213, G213, A213, B213. Measure 372: C214, D214, E214, F214. Measure 373: G214, A214, B214, C215. Measure 374: D215, E215, F215, G215. Measure 375: A215, B215, C216, D216. Measure 376: E216, F216, G216, A216. Measure 377: B216, C217, D217, E217. Measure 378: F217, G217, A217, B217. Measure 379: C218, D218, E218, F218. Measure 380: G218, A218, B218, C219. Measure 381: D219, E219, F219, G219. Measure 382: A219, B219, C220, D220. Measure 383: E220, F220, G220, A220. Measure 384: B220, C221, D221, E221. Measure 385: F221, G221, A221, B221. Measure 386: C222, D222, E222, F222. Measure 387: G222, A222, B222, C223. Measure 388: D223, E223, F223, G223. Measure 389: A223, B223, C224, D224. Measure 390: E224, F224, G224, A224. Measure 391: B224, C225, D225, E225. Measure 392: F225, G225, A225, B225. Measure 393: C226, D226, E226, F226. Measure 394: G226, A226, B226, C227. Measure 395: D227, E227, F227, G227. Measure 396: A227, B227, C228, D228. Measure 397: E228, F228, G228, A228. Measure 398: B228, C229, D229, E229. Measure 399: F229, G229, A229, B229. Measure 400: C230, D230, E230, F230. Measure 401: G230, A230, B230, C231. Measure 402: D231, E231, F231, G231. Measure 403: A231, B231, C232, D232. Measure 404: E232, F232, G232, A232. Measure 405: B232, C233, D233, E233. Measure 406: F233, G233, A233, B233. Measure 407: C234, D234, E234, F234. Measure 408: G234, A234, B234, C235. Measure 409: D235, E235, F235, G235. Measure 410: A235, B235, C236, D236. Measure 411: E236, F236, G236, A236. Measure 412: B236, C237, D237, E237. Measure 413: F237, G237, A237, B237. Measure 414: C238, D238, E238, F238. Measure 415: G238, A238, B238, C239. Measure 416: D239, E239, F239, G239. Measure 417: A239, B239, C240, D240. Measure 418: E240, F240, G240, A240. Measure 419: B240, C241, D241, E241. Measure 420: F241, G241, A241, B241. Measure 421: C242, D242, E242, F242. Measure 422: G242, A242, B242, C243. Measure 423: D243, E243, F243, G243. Measure 424: A243, B243, C244, D244. Measure 425: E244, F244, G244, A244. Measure 426: B244, C245, D245, E245. Measure 427: F245, G245, A245, B245. Measure 428: C246, D246, E246, F246. Measure 429: G246, A246, B246, C247. Measure 430: D247, E247, F247, G247. Measure 431: A247, B247, C248, D248. Measure 432: E248, F248, G248, A248. Measure 433: B248, C249, D249, E249. Measure 434: F249, G249, A249, B249. Measure 435: C250, D250, E250, F250. Measure 436: G250, A250, B250, C251. Measure 437: D251, E251, F251, G251. Measure 438: A251, B251, C252, D252. Measure 439: E252, F252, G252, A252. Measure 440: B252, C253, D253, E253. Measure 441: F253, G253, A253, B253. Measure 442: C254, D254, E254, F254. Measure 443: G254, A254, B254, C255. Measure 444: D255, E255, F255, G255. Measure 445: A255, B255, C256, D256. Measure 446: E256, F256, G256, A256. Measure 447: B256, C257, D257, E257. Measure 448: F257, G257, A257, B257. Measure 449: C258, D258, E258, F258. Measure 450: G258, A258, B258, C259. Measure 451: D259, E259, F259, G259. Measure 452: A259, B259, C260, D260. Measure 453: E260, F260, G260, A260. Measure 454: B260, C261, D261, E261. Measure 455: F261, G261, A261, B261. Measure 456: C262, D262, E262, F262. Measure 457: G262, A262, B262, C263. Measure 458: D263, E263, F263, G263. Measure 459: A263, B263, C264, D264. Measure 460: E264, F264, G264, A264. Measure 461: B264, C265, D265, E265. Measure 462: F265, G265, A265, B265. Measure 463: C266, D266, E266, F266. Measure 464: G266, A266, B266, C267. Measure 465: D267, E267, F267, G267. Measure 466: A267, B267, C268, D268. Measure 467: E268, F268, G268, A268. Measure 468: B268, C269, D269, E269. Measure 469: F269, G269, A269, B269. Measure 470: C270, D270, E270, F270. Measure 471: G270, A270, B270, C271. Measure 472: D271, E271, F271, G271. Measure 473: A271, B271, C272, D272. Measure 474: E272, F272, G272, A272. Measure 475: B272, C273, D273, E273. Measure 476: F273, G273, A273, B273. Measure 477: C274, D274, E274, F274. Measure 478: G274, A274, B274, C275. Measure 479: D275, E275, F275, G275. Measure 480: A275, B275, C276, D276. Measure 481: E276, F276, G276, A276. Measure 482: B276, C277, D277, E277. Measure 483: F277, G277, A277, B277. Measure 484: C278, D278, E278, F278. Measure 485: G278, A278, B278, C279. Measure 486: D279, E279, F279, G279. Measure 487: A279, B279, C280, D280. Measure 488: E280, F280, G280, A280. Measure 489: B280, C281, D281, E281. Measure 490: F281, G281, A281, B281. Measure 491: C282, D282, E282, F282. Measure 492: G282, A282, B282, C283. Measure 493: D283, E283, F283, G283. Measure 494: A283, B283, C284, D284. Measure 495: E284, F284, G284, A284. Measure 496: B284, C285, D285, E285. Measure 497: F285, G285, A285, B285. Measure 498: C286, D286, E286, F286. Measure 499: G286, A286, B286, C287. Measure 500: D287, E287, F2

31 *rit.* ♩ = 56 To Coda

36 ♩ = 80

40

43

46

50

53 D.C. al Coda

57

58 ♩ = 56

*p*

Detailed description of the musical score: The score is written for a bass clef instrument in a key with two flats (B-flat and E-flat). It consists of eight staves of music. The first staff (measures 31-35) begins with a 'rit.' marking and a tempo of ♩ = 56. It features a series of eighth notes and sixteenth notes, with a crescendo leading to a forte (*f*) dynamic. The second staff (measures 36-39) starts with a double bar line and a repeat sign, followed by a mezzo-piano (*mp*) dynamic and a tempo change to ♩ = 80. The third staff (measures 40-42) continues with eighth and sixteenth notes. The fourth staff (measures 43-45) features a more complex rhythmic pattern with sixteenth notes and rests. The fifth staff (measures 46-49) continues with similar rhythmic patterns. The sixth staff (measures 50-52) includes a dynamic change to piano (*p*) and a 'D.C. al Coda' instruction. The seventh staff (measures 53-56) contains a whole rest followed by a few notes. The eighth staff (measures 57-58) begins with a tempo of ♩ = 56 and includes a triplet of eighth notes and a dynamic of *p*.

65

*mf*

69

*mp*

74

78

82

87

Fine

Triangle Open

91

*mp*

108

*mp*

123

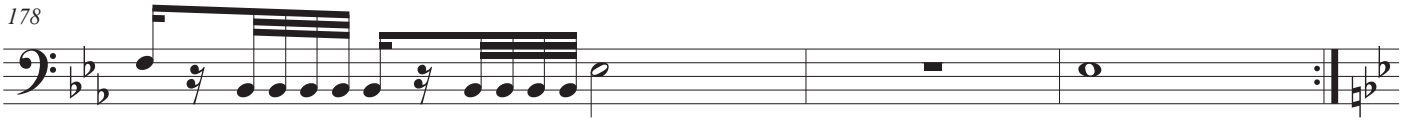
*mf*



175



178



181



187



192



195

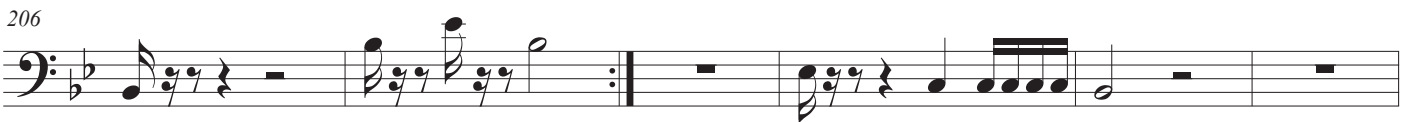


High Tom

201



206



212



223



227



230



235



238

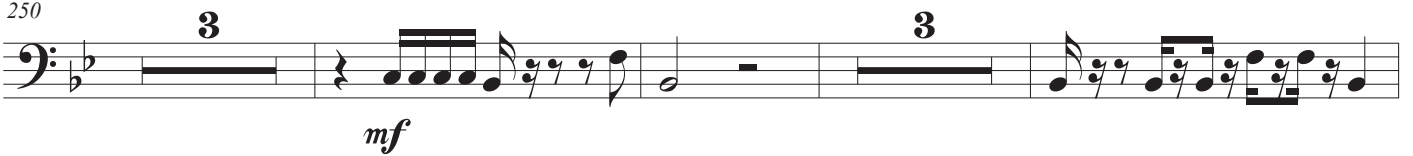


245



Low Woodtick

250



259



265



274



Musical notation for measure 274, bass clef, key signature of two flats. The measure contains a quarter rest, followed by a quarter note G4, a quarter note A4, a quarter note B4, and a quarter note C5. This is followed by a quarter rest, a quarter note G4, a quarter note F4, a quarter note E4, and a quarter note D4. The measure ends with a quarter rest, a quarter note G4, and a quarter note F4. A repeat sign is present at the end of the measure.

277



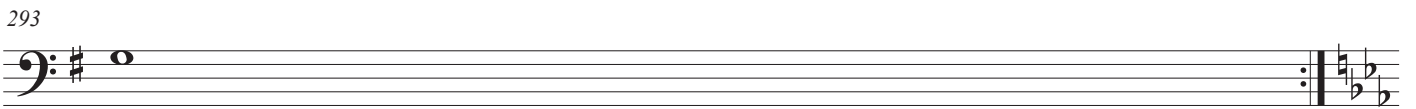
Musical notation for measure 277, bass clef, key signature of one sharp. The measure begins with a repeat sign, followed by a whole rest. A fermata is placed over the whole rest. The measure continues with a quarter note G4, a quarter note A4, a quarter note B4, and a quarter note C5. This is followed by a quarter note B4, a quarter note A4, a quarter note G4, and a quarter note F4. The measure ends with a quarter note E4, a quarter note D4, and a quarter note C4. A fermata is placed over the final note. The dynamic marking *mp* is written below the staff.

288



Musical notation for measure 288, bass clef, key signature of one sharp. The measure begins with a quarter note G4, a quarter note F4, a quarter note E4, and a quarter note D4. This is followed by a quarter rest, a quarter note G4, a quarter note A4, a quarter note B4, and a quarter note C5. This is followed by a quarter note B4, a quarter note A4, a quarter note G4, and a quarter note F4. The measure ends with a quarter note E4, a quarter note D4, and a quarter note C4.

293



Musical notation for measure 293, bass clef, key signature of one sharp. The measure contains a whole rest. A repeat sign is present at the end of the measure.

294



Musical notation for measure 294, bass clef, key signature of two flats. The measure begins with a repeat sign, followed by a whole rest. A fermata is placed over the whole rest. The measure continues with a quarter note G4, a quarter note A4, a quarter note B4, and a quarter note C5. This is followed by a quarter note B4, a quarter note A4, a quarter note G4, and a quarter note F4. The measure ends with a quarter note E4, a quarter note D4, and a quarter note C4. The dynamic marking *mp* is written below the staff. There are also markings for a double bar line (2) and two triplets (3).

299



Musical notation for measure 299, bass clef, key signature of two flats. The measure begins with a quarter rest, a quarter note G4, a quarter note F4, a quarter note E4, and a quarter note D4. This is followed by a quarter rest, a quarter note G4, a quarter note A4, a quarter note B4, and a quarter note C5. This is followed by a quarter note B4, a quarter note A4, a quarter note G4, and a quarter note F4. The measure ends with a quarter note E4, a quarter note D4, and a quarter note C4.

304



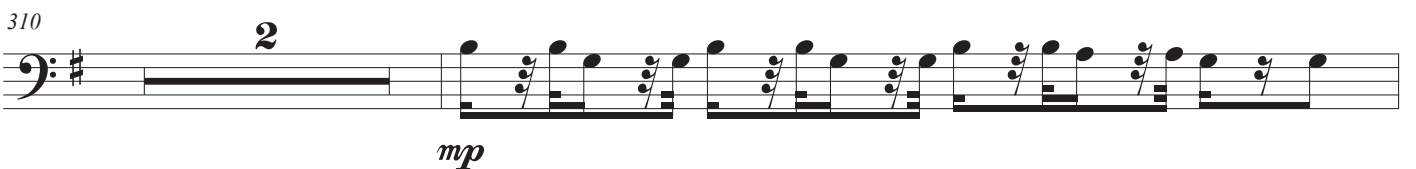
Musical notation for measure 304, bass clef, key signature of two flats. The measure begins with a quarter rest, a quarter note G4, a quarter note F4, a quarter note E4, and a quarter note D4. This is followed by a quarter note G4, a quarter note A4, a quarter note B4, and a quarter note C5. This is followed by a quarter note B4, a quarter note A4, a quarter note G4, and a quarter note F4. The measure ends with a quarter note E4, a quarter note D4, and a quarter note C4. A repeat sign is present at the end of the measure.

309



Musical notation for measure 309, bass clef, key signature of two flats. The measure begins with a quarter rest, a quarter note G4, a quarter note F4, a quarter note E4, and a quarter note D4. This is followed by a quarter rest, a quarter note G4, a quarter note A4, a quarter note B4, and a quarter note C5. The measure ends with a quarter note E4, a quarter note D4, and a quarter note C4. A repeat sign is present at the end of the measure.

310



Musical notation for measure 310, bass clef, key signature of one sharp. The measure begins with a repeat sign, followed by a whole rest. A fermata is placed over the whole rest. The measure continues with a quarter note G4, a quarter note A4, a quarter note B4, and a quarter note C5. This is followed by a quarter note B4, a quarter note A4, a quarter note G4, and a quarter note F4. The measure ends with a quarter note E4, a quarter note D4, and a quarter note C4. The dynamic marking *mp* is written below the staff. There is also a marking for a double bar line (2).





341

345

349

357

*mp*

362

368

379

383

387

*mp*

*p*









# 音樂短劇-童話

574 Double Bass

起始敘(Prologue) Cheng Shjun

*mf*

580

583

586

590

595

599

請尊重作者智慧財產權，勿於公開場合進行商業活動

願他用口與我親嘴，因你的愛情比酒更美。

*Let him kiss me with the kisses of his mouth! For your love is better than wine.*