

SUITE de BALLETS des PLAISIRS

for Trumpet and Organ

Score (02':52'')

LWV 2

Jean - Baptiste Lully (1632 - 1687)

Arr. Michel Rondeau

1. Entrée - Moderato $\text{♩} = 60$

Trumpet in C

Organ

C Tpt.

Org.

C Tpt.

Org.

2. Air - Moderato

C Tpt.

Org.

21

C Tpt.

Org.

27

C Tpt.

Org.

33

1. 2.

3. Gavotte - Allegro

C Tpt.

Org.

38

C Tpt.

Org.

C Tpt.

Org.

The image shows a musical score for two instruments: C Tpt. (C Trumpet) and Org. (Organ). The score begins at measure 43. The C Tpt. part is written in a single staff with a treble clef and a key signature of one flat (B-flat). It features a melodic line with various note values, including quarter, eighth, and sixteenth notes, and rests. The Organ part is written in two staves, with a treble clef on the upper staff and a bass clef on the lower staff, both in the same key signature. The organ accompaniment consists of chords and moving lines in both hands, providing harmonic support for the trumpet melody. The score concludes with a double bar line and repeat dots.

SUITE de BALLETS des PLAISIRS

for Trumpet and Organ

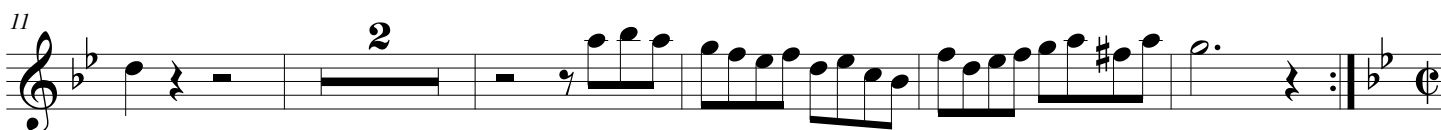
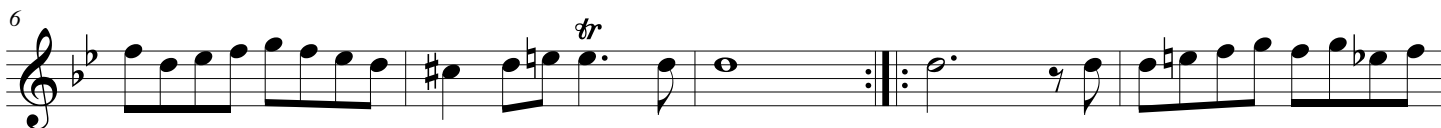
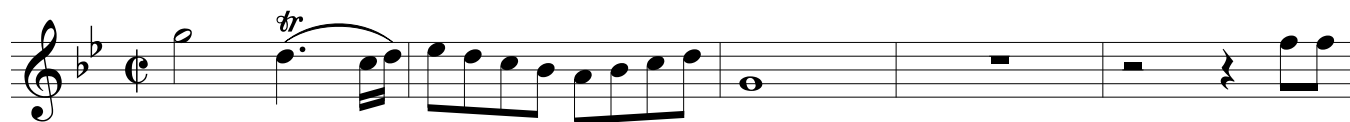
LWV 2

Trumpet in C

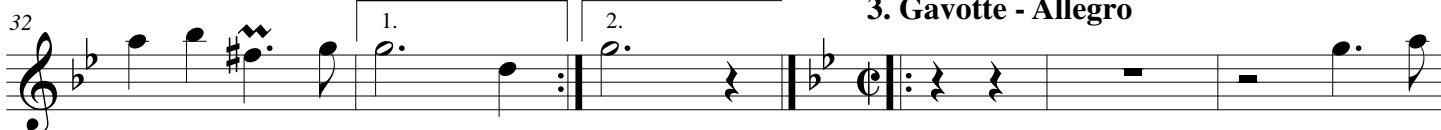
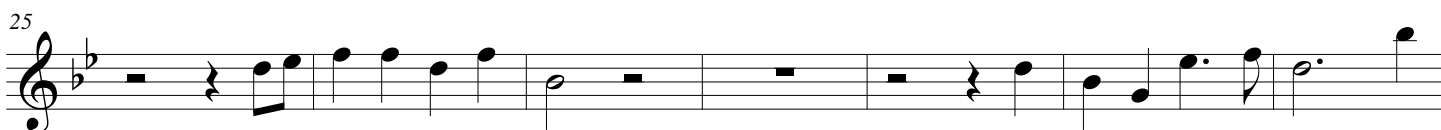
Jean - Baptiste Lully (1632 - 1687)

Arr. Michel Rondeau

1. Entrée - Moderato $\text{♩} = 60$



2. Air - Moderato



SUITE de BALLETS des PLAISIRS

for Trumpet and Organ

LWV 2

Jean - Baptiste Lully (1632 - 1687)

Arr. Michel Rondeau

Organ

Trumpet in C

1. Entrée - Moderato $\text{♩} = 60$



C Tpt.

Org.



C Tpt.

Org.



C Tpt.

2. Air - Moderato

Org.



C Tpt. ²¹

Org. ²¹

Detailed description: This system contains measures 21 to 26. The C Tpt. part starts with a whole rest in measure 21, followed by a half note G4 in measure 22, and then a quarter note G4 in measure 23. The Organ part features a complex texture with chords and moving lines in both staves. Measure 21 has a G4 chord. Measure 22 has a G4 chord with a moving bass line. Measure 23 has a G4 chord with a moving bass line. Measure 24 has a G4 chord with a moving bass line. Measure 25 has a G4 chord with a moving bass line. Measure 26 has a G4 chord with a moving bass line.

C Tpt. ²⁷

Org. ²⁷

Detailed description: This system contains measures 27 to 32. The C Tpt. part has a whole rest in measure 27, followed by a half note G4 in measure 28, and then a quarter note G4 in measure 29. The Organ part features a complex texture with chords and moving lines in both staves. Measure 27 has a G4 chord. Measure 28 has a G4 chord with a moving bass line. Measure 29 has a G4 chord with a moving bass line. Measure 30 has a G4 chord with a moving bass line. Measure 31 has a G4 chord with a moving bass line. Measure 32 has a G4 chord with a moving bass line.

C Tpt. ³³

Org. ³³

3. Gavotte - Allegro

Detailed description: This system contains measures 33 to 37. The C Tpt. part has a whole rest in measure 33, followed by a half note G4 in measure 34, and then a quarter note G4 in measure 35. The Organ part features a complex texture with chords and moving lines in both staves. Measure 33 has a G4 chord. Measure 34 has a G4 chord with a moving bass line. Measure 35 has a G4 chord with a moving bass line. Measure 36 has a G4 chord with a moving bass line. Measure 37 has a G4 chord with a moving bass line.

C Tpt. ³⁸

Org. ³⁸

Detailed description: This system contains measures 38 to 42. The C Tpt. part has a whole rest in measure 38, followed by a half note G4 in measure 39, and then a quarter note G4 in measure 40. The Organ part features a complex texture with chords and moving lines in both staves. Measure 38 has a G4 chord. Measure 39 has a G4 chord with a moving bass line. Measure 40 has a G4 chord with a moving bass line. Measure 41 has a G4 chord with a moving bass line. Measure 42 has a G4 chord with a moving bass line.

C Tpt.

Org.

The image shows a musical score for two instruments: C Tpt. (C Trumpet) and Org. (Organ). The score begins at measure 43. The C Tpt. part is written in a single staff with a treble clef and a key signature of two flats (B-flat and E-flat). It features a melodic line with various note values, including quarter, eighth, and sixteenth notes, and rests. The Organ part is written in two staves, with a treble clef on the upper staff and a bass clef on the lower staff, both in the same key signature. The organ part provides harmonic support with chords and moving lines in both hands. The piece concludes with a double bar line and repeat dots.