



Dite Cesareo Boiorum sanguine Princeps



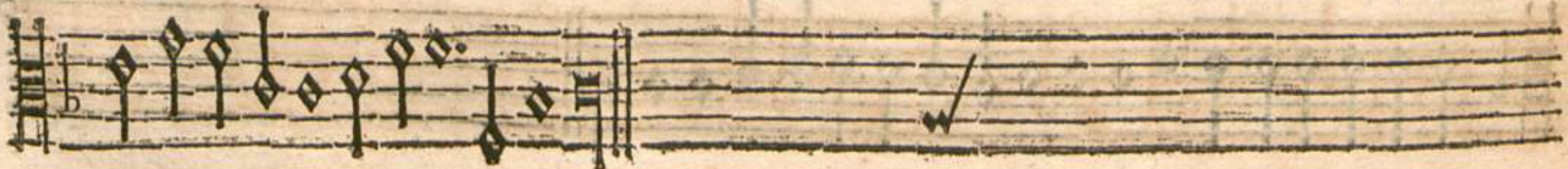
sanguine prin cept Bauariz gen tis Bauari e gentis spes coe



lumeng; domus hac etate tibi quenquã pietate secundum uirtute pas



rem non super esse puto non super



esse puto.

A 8. Prima Pars.

XLI.

TENOR. II.



Dite Cesareo Boiorum sanguine Princeps Boiorum



sanguine Princeps sanguine Princeps Bauariae gentis spes columenq;



domus hac etate tibi quenquam tibi quenquam pietate secundum et uirtus



te parem ij

non super esse puta ij



ij

non super esse puta.

A 8. Secunda Pars.

TENOR.



Musical staff with notes and a clef.

Misera sub nocte mi cans ut Cynthia uultus splendor

Musical staff with notes and a clef.

re exuperat astra minora sui non aliter princeps Alberte non aliter princeps

Musical staff with notes and a clef.

Alberte excellis auita excellis auita uirtute illustres ij

Musical staff with notes and a clef.

ac pietate uiros ij ac pietate uia

Musical staff with notes and a clef.

ros.

A 5. Secunda Pars.

TENOR.



First musical staff with notes and a clef.

B scura sub nocte mi cans ut Cynthia uul tus splen

Second musical staff with notes and a clef.

dore exuperat astra minora sui non aliter ij

Third musical staff with notes and a clef.

princeps Alberte ij excellis aui ta ij uira

Fourth musical staff with notes and a clef.

tute illustres ij ac pietate uis

Fifth musical staff with notes and a clef.

ros. ij