

W.A. Mozart  
Divertimento, K. 113

Oboe I.

Allegro.

The Allegro section consists of seven staves of music. It begins with a treble clef, a key signature of two flats (B-flat and E-flat), and a common time signature (C). The first staff starts with a forte (*f*) dynamic and includes a triplet of eighth notes. The second staff features a piano (*p*) dynamic and a triplet of eighth notes. The third staff is marked *fp* and contains several sixteenth-note passages. The fourth staff has a piano (*p*) dynamic and a triplet of eighth notes. The fifth staff starts with a forte (*f*) dynamic and includes a triplet of eighth notes. The sixth staff is marked *p* and contains a triplet of eighth notes. The seventh staff features a forte (*f*) dynamic and a triplet of eighth notes. The section concludes with a repeat sign.

Andante.

The Andante section consists of four staves of music. It begins with a treble clef, a key signature of two flats (B-flat and E-flat), and a 3/4 time signature. The first staff starts with a piano (*p*) dynamic. The second staff features a forte (*f*) dynamic and a triplet of eighth notes. The third staff is marked *p* and contains a triplet of eighth notes. The fourth staff starts with a forte (*f*) dynamic and includes a triplet of eighth notes. The section concludes with a repeat sign.

Oboe I.

Minnetto.

Musical notation for the Minnetto section, consisting of two staves. The first staff begins with a treble clef, a key signature of two flats (Bb and Eb), and a 3/4 time signature. The music features a series of eighth and sixteenth notes with slurs. A first ending bracket labeled '1' spans the final few measures. The second staff concludes with a double bar line and the word 'Fine.' written below.

Trio.

Musical notation for the Trio section, consisting of one staff. The key signature changes to one flat (Bb) and the time signature to 3/4. The music starts with a first ending bracket labeled '4'. The dynamics *p* (piano) are indicated below the staff. The section ends with a double bar line and the text 'Minnetto D. C.' written below.

Allegro.

Musical notation for the Allegro section, consisting of ten staves. The key signature remains one flat (Bb) and the time signature is 3/4. The music is marked with a first ending bracket labeled '4' and the dynamic *f* (forte). The section includes several first ending brackets labeled '4', '8', and '7'. Fingerings are indicated by letters G, H, K, L, and M above the notes. The dynamics *f* and *p* are used throughout. The section concludes with a double bar line.

Wolfgang Amadeus Mozart  
Divertimento, K. 113

Oboe II.

Allegro.

Musical score for Oboe II, Allegro section, measures 1-24. The score is written in G minor (two flats) and 3/4 time. It consists of eight staves of music. The first staff begins with a forte (*f*) dynamic and a triplet of eighth notes. The second staff features a piano (*p*) dynamic and a triplet of eighth notes. The third staff contains four *fp* (fortissimo piano) markings and a forte (*f*) marking. The fourth staff starts with a first ending bracket (1) and a piano (*p*) dynamic. The fifth staff includes a forte (*f*) dynamic and a triplet of eighth notes. The sixth staff begins with a piano (*p*) dynamic and a forte (*f*) dynamic. The seventh staff features two *fp* markings and a forte (*f*) marking. The eighth staff concludes with a forte (*f*) dynamic. Section markers A, B, C, and D are placed above the staves at measures 3, 10, 17, and 24 respectively. The piece ends with a repeat sign and a first ending bracket (1).

Andante.

Musical score for Oboe II, Andante section, measures 25-32. The score is written in G minor (two flats) and 3/4 time. It consists of four staves of music. The first staff begins with a piano (*p*) dynamic. The second staff features a forte (*f*) dynamic and a piano (*p*) dynamic. The third staff includes a second ending bracket (2). The fourth staff features a forte (*f*) dynamic and a piano (*p*) dynamic. Section markers E and F are placed above the staves at measures 29 and 32 respectively. The piece ends with a repeat sign and a second ending bracket (2).

Oboe II.

Menuetto.

1

Fine.

The first staff of the Menuetto section is in 3/4 time, Eb major, and begins with a first ending bracket. The second staff concludes the section with a double bar line and the word "Fine".

Trio.

4

*p*

4

*p*

Menuetto D.C.

The Trio section is in 3/4 time, Eb major, and begins with a first ending bracket. It features piano (*p*) dynamics and concludes with the instruction "Menuetto D.C." (Da Capo).

Allegro.

4

*f*

4

*f*

G 12 H 7

*p*

4

*f*

8

*f*

I 4 4

*f*

K 12 L 7

*p*

M

*f*

The Allegro section is in 2/4 time, Eb major, and begins with a first ending bracket. It features forte (*f*) dynamics and includes various first ending brackets labeled G, H, I, K, L, and M. The section concludes with a double bar line.

W.A. Mozart  
Divertimento, K. 113

Corno inglese I.

Allegro.

The Allegro section consists of eight staves of music. It begins with a treble clef, a key signature of two flats (B-flat and E-flat), and a common time signature (C). The first staff starts with a forte (*f*) dynamic and includes a triplet of eighth notes. The second staff features a piano (*p*) dynamic and a triplet of eighth notes. The third staff contains several fortissimo (*fp*) passages followed by a forte (*f*) section. The fourth staff begins with a first ending bracket and a piano (*p*) dynamic. The fifth staff includes a section marked 'C' and a triplet of eighth notes. The sixth staff starts with a section marked 'D' and a forte (*f*) dynamic. The seventh staff features fortissimo (*fp*) passages and a forte (*f*) section. The eighth staff concludes the section with fortissimo (*fp*) passages and a forte (*f*) dynamic.

Andante.

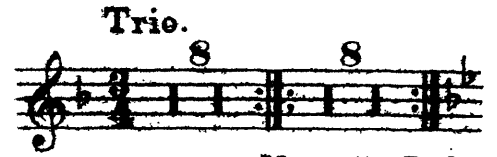
The Andante section consists of four staves of music. It begins with a treble clef, a key signature of two flats (B-flat and E-flat), and a 3/4 time signature. The first staff starts with a piano (*p*) dynamic. The second staff features a forte (*f*) dynamic and a section marked 'E' with a fourth note. The third staff begins with a first ending bracket and a forte (*f*) dynamic. The fourth staff includes a section marked 'F' with a fourth note and concludes with a piano (*p*) dynamic.

Corno inglese I.

Menuetto.



Fine.



Menuetto D.C.

Allegro.



G 12



H

7



8



I

f

p

f



p

f



K 12

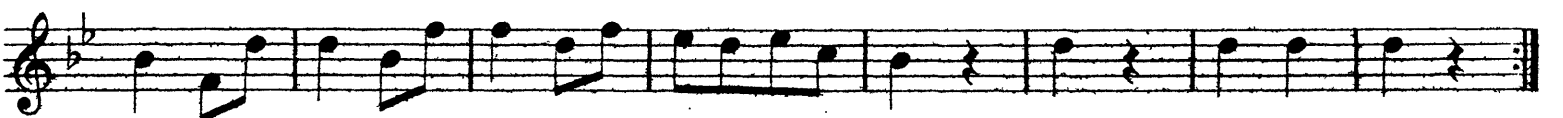
L

p

7



M



Wolfgang Amadeus Mozart  
Divertimento, K. 113

Corno inglese II.

Allegro.

Musical score for Corno inglese II, Allegro section. The score consists of eight staves of music. The first staff begins with a treble clef, a key signature of two flats (B-flat and E-flat), and a 3/4 time signature. The tempo is marked 'Allegro.' and the dynamics range from *f* (forte) to *p* (piano). The music features various rhythmic patterns, including eighth and sixteenth notes, and rests. There are several first endings marked with '1' and second endings marked with '2'. Specific sections are labeled with letters: 'A' (measures 5-6), 'B' (measures 10-11), 'C' (measures 15-16), and 'D' (measures 20-21). The score concludes with a double bar line and repeat dots.

Andante.

Musical score for Corno inglese II, Andante section. The score consists of four staves of music. The tempo is marked 'Andante.' and the dynamics range from *p* (piano) to *f* (forte). The music is characterized by a slower pace and a focus on melodic lines. There are first endings marked with '1' and second endings marked with '2'. Specific sections are labeled with letters: 'E' (measures 1-2) and 'F' (measures 3-4). The score concludes with a double bar line and repeat dots.

Corno inglese II.

Mennetto.

1

Fine.

Trio. 8 8

Menuetto D. C.

Allegro.

*p* *f*

*p* *f*

*p* *f*

*f* *p* *f*

*p* *f*

*p* *f*

*f*