

Bossa

$\text{♩} = 80$

Handwritten musical score for guitar, consisting of six systems of staves. The notation includes chords, rhythmic patterns, and melodic lines.

- System 1:** Melody line with notes G4, A4, B4, C5, B4, A4, G4. Chords: C4+B4, C4m1, Bm1, A4+B4. Rhythm: quarter notes.
- System 2:** Melody line with notes G4, A4, B4, C5, B4, A4, G4. Chords: D4, D4, C4+B4, C4m1, A4+B4, A4+B4. Rhythm: quarter notes.
- System 3:** Melody line with notes G4, A4, B4, C5, B4, A4, G4. Chords: D4, D4, C4+B4, C4m1, A4+B4, A4+B4. Rhythm: quarter notes.
- System 4:** Melody line with notes G4, A4, B4, C5, B4, A4, G4. Chords: D4, D4, C4+B4, C4m1, A4+B4, A4+B4. Rhythm: quarter notes.
- System 5:** Melody line with notes G4, A4, B4, C5, B4, A4, G4. Chords: D4, D4, C4+B4, C4m1, A4+B4, A4+B4. Rhythm: quarter notes.
- System 6:** Melody line with notes G4, A4, B4, C5, B4, A4, G4. Chords: D4, D4, C4+B4, C4m1, A4+B4, A4+B4. Rhythm: quarter notes.

Handwritten musical notation on two staves. The notation includes notes, stems, and clefs. The first staff begins with a treble clef and contains several notes with stems. The second staff begins with a bass clef and contains notes with stems. The handwriting is in black ink on aged paper.

~~Shoo Nood~~
1983

Eleven empty musical staves, each consisting of five horizontal lines, arranged vertically on the page.

Slow

Handwritten musical notation on a five-line staff. The notation includes a treble clef, a key signature of one sharp (F#), and a time signature of 3/4. The notes are: F#4, G4, A4, B4, C5, D5, E5, F#5, G5, A5, B5, C6. There are some additional markings above the staff, possibly indicating dynamics or articulation.

Handwritten musical notation on a five-line staff. The notation includes a treble clef, a key signature of one sharp (F#), and a time signature of 3/4. The notes are: F#4, G4, A4, B4, C5, D5, E5, F#5, G5, A5, B5, C6. There are some additional markings above the staff, possibly indicating dynamics or articulation.

Handwritten musical notation on a five-line staff. The notation includes a treble clef, a key signature of one sharp (F#), and a time signature of 3/4. The notes are: F#4, G4, A4, B4, C5, D5, E5, F#5, G5, A5, B5, C6. There are some additional markings above the staff, possibly indicating dynamics or articulation.

Handwritten musical notation on a five-line staff. The notation includes a treble clef, a key signature of one sharp (F#), and a time signature of 3/4. The notes are: F#4, G4, A4, B4, C5, D5, E5, F#5, G5, A5, B5, C6. There are some additional markings above the staff, possibly indicating dynamics or articulation.

Handwritten musical notation on a five-line staff. The notation includes a treble clef, a key signature of one sharp (F#), and a time signature of 3/4. The notes are: F#4, G4, A4, B4, C5, D5, E5, F#5, G5, A5, B5, C6. There are some additional markings above the staff, possibly indicating dynamics or articulation.

4 years

A. Noan.

Handwritten musical notation on a single staff. It begins with a treble clef and a key signature of three flats (B-flat, E-flat, A-flat). The tempo marking is $\text{♩} = 60$. The notation includes several measures with notes, rests, and dynamic markings such as *p* and *f*. There are also some handwritten annotations like *b+* and *+*.

Handwritten musical notation on two staves. The top staff has a treble clef and a key signature of three flats. The bottom staff has a bass clef and a key signature of three flats. The notation includes notes, rests, and dynamic markings like *p* and *f*. There is a handwritten annotation *(m.d.)* above the top staff.

Handwritten musical notation on two staves. The top staff has a treble clef and a key signature of three flats. The bottom staff has a bass clef and a key signature of three flats. The notation includes notes, rests, and dynamic markings like *p* and *f*.

Handwritten musical notation on two staves. The top staff has a treble clef and a key signature of three flats. The bottom staff has a bass clef and a key signature of three flats. The notation includes notes, rests, and dynamic markings like *p* and *f*.

Handwritten musical notation on two staves. The top staff has a treble clef and a key signature of three flats. The bottom staff has a bass clef and a key signature of three flats. The notation includes notes, rests, and dynamic markings like *p* and *f*.

V.S.

Handwritten musical notation on a grand staff. The upper staff contains a melody with a key signature of two flats (Bb, Eb) and a common time signature (C). The lower staff contains a piano accompaniment with a rhythmic pattern of eighth and sixteenth notes. The piece concludes with a double bar line.

Handwritten musical notation on a grand staff. The upper staff contains a melody with a key signature of two flats (Bb, Eb) and a common time signature (C). The lower staff contains a piano accompaniment with a rhythmic pattern of eighth and sixteenth notes. The piece concludes with a double bar line.

Handwritten musical notation on a grand staff. The upper staff contains a melody with a key signature of two flats (Bb, Eb) and a common time signature (C). The lower staff contains a piano accompaniment with a rhythmic pattern of eighth and sixteenth notes. The piece concludes with a double bar line.

Handwritten musical notation on a grand staff. The upper staff contains a melody with a key signature of two flats (Bb, Eb) and a common time signature (C). The lower staff contains a piano accompaniment with a rhythmic pattern of eighth and sixteenth notes. The piece concludes with a double bar line.

Handwritten musical notation on a grand staff. The upper staff contains a melody with a key signature of two flats (Bb, Eb) and a common time signature (C). The lower staff contains a piano accompaniment with a rhythmic pattern of eighth and sixteenth notes. The piece concludes with a double bar line.

(#) and 1/2.

V.S.

Handwritten musical notation for the first system, consisting of two staves. The top staff contains a series of vertical lines with dots, and the bottom staff contains a series of notes with stems and beams.

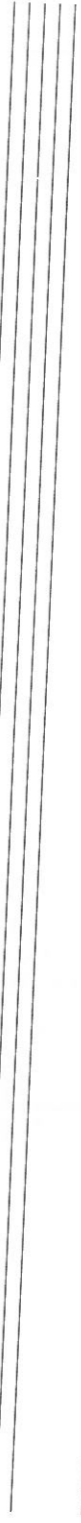
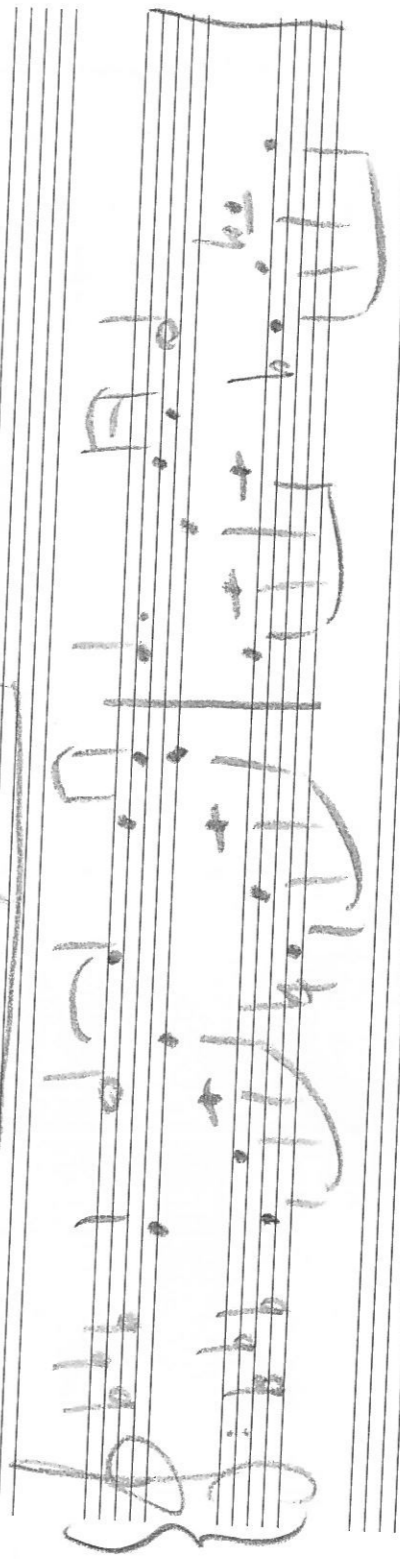
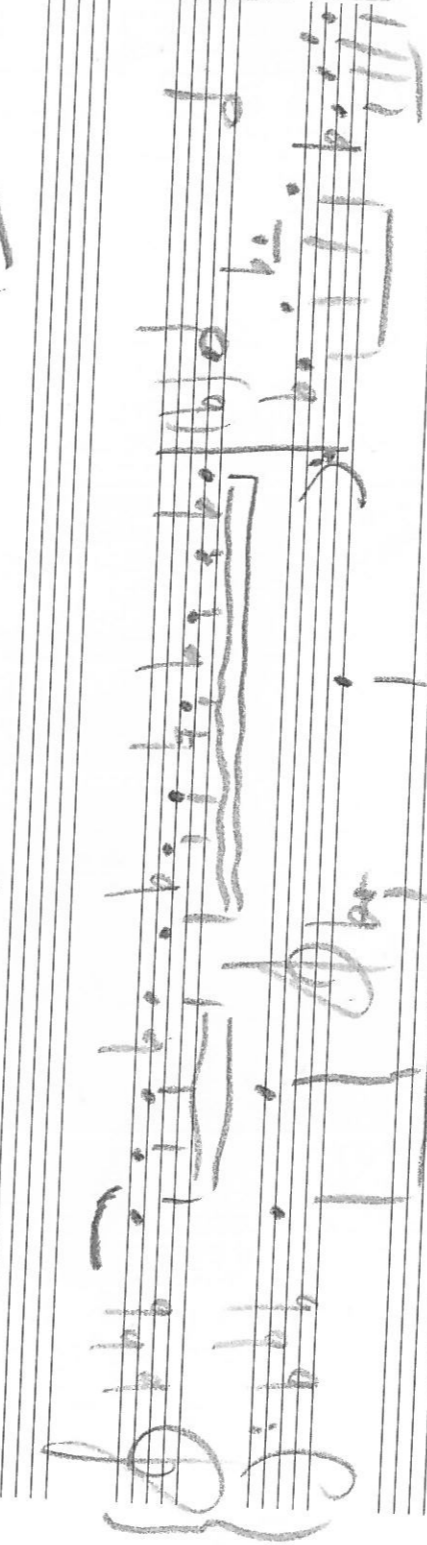
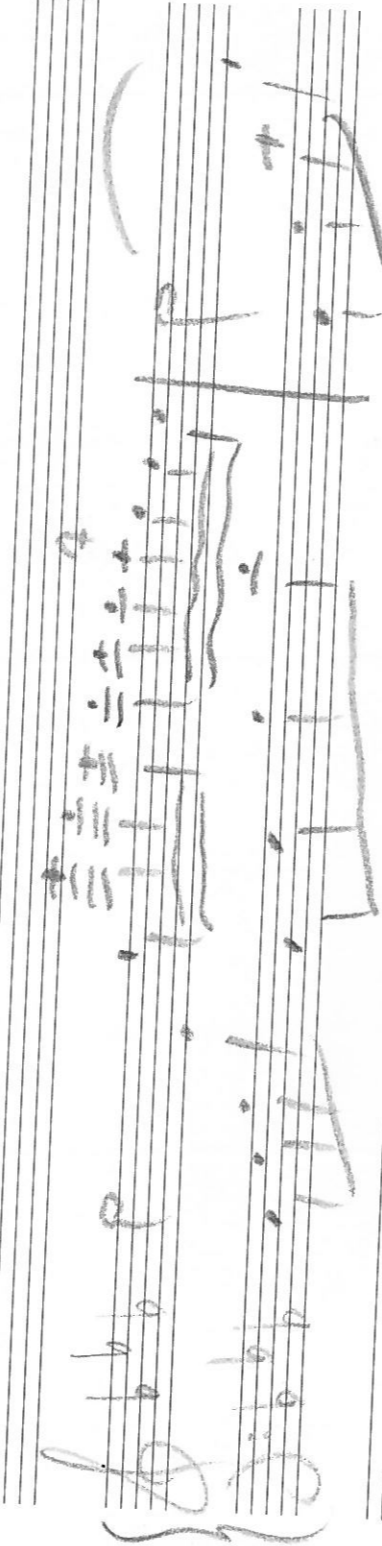
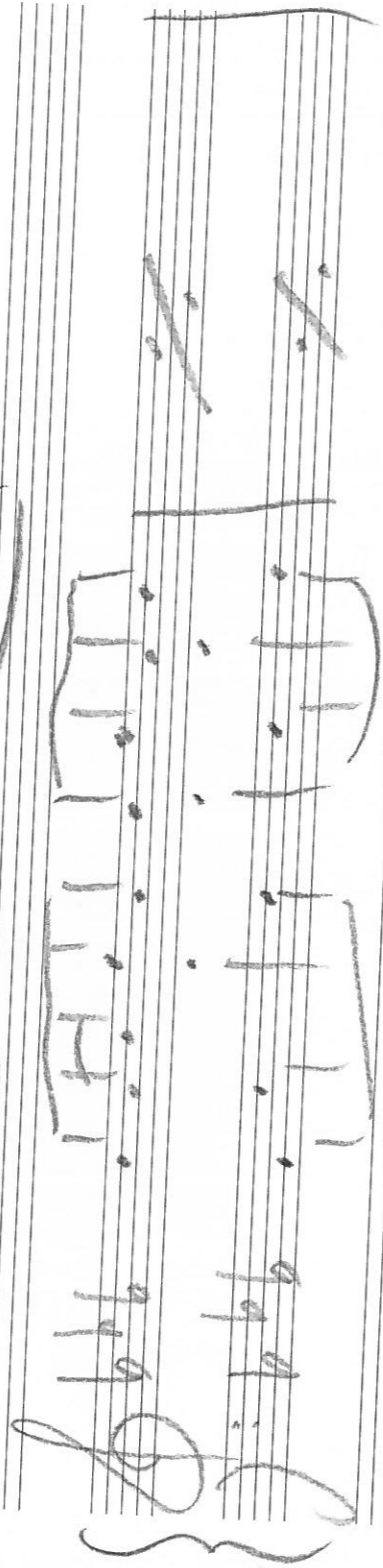
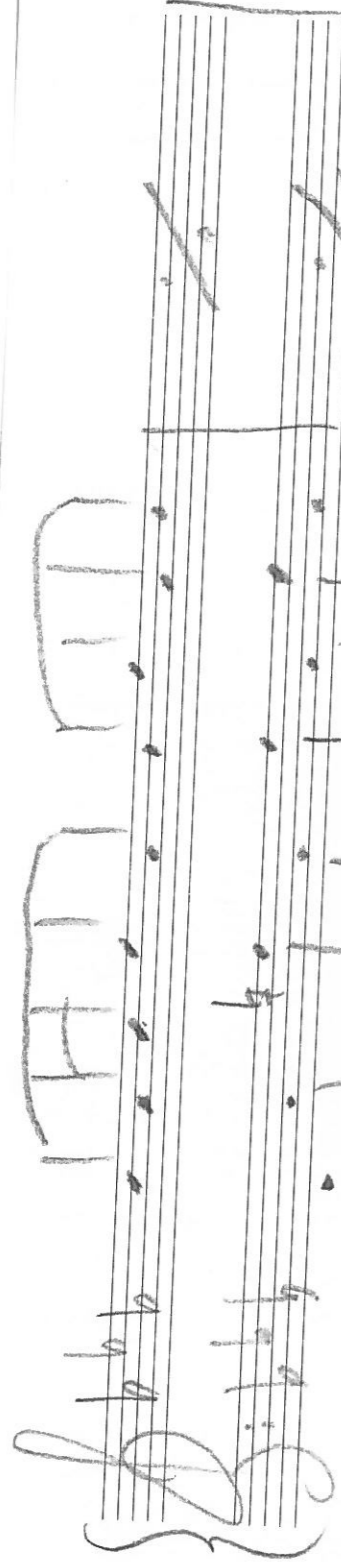
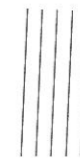
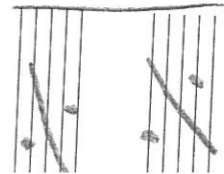
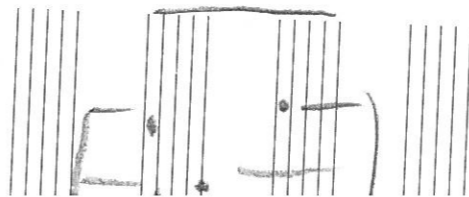
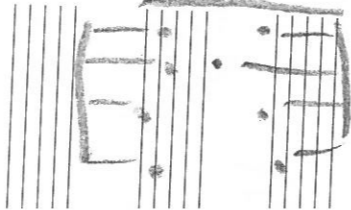
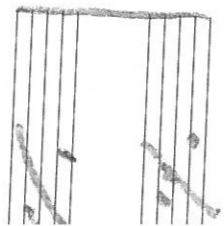
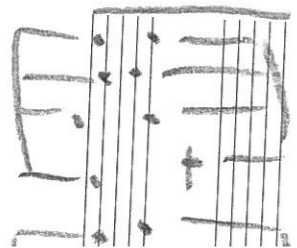
Handwritten musical notation for the second system, consisting of two staves. The top staff contains a series of vertical lines with dots, and the bottom staff contains a series of notes with stems and beams.

Handwritten musical notation for the third system, consisting of two staves. The top staff contains a series of vertical lines with dots, and the bottom staff contains a series of notes with stems and beams.

Handwritten musical notation for the fourth system, consisting of two staves. The top staff contains a series of vertical lines with dots, and the bottom staff contains a series of notes with stems and beams.

Handwritten musical notation for the fifth system, consisting of two staves. The top staff contains a series of vertical lines with dots, and the bottom staff contains a series of notes with stems and beams.

The image displays a handwritten musical score on ten staves, organized into five systems of two staves each. The notation is written in black ink on white paper. Each system begins with a treble clef and a key signature of one flat (Bb). The notation includes various rhythmic and melodic elements, such as notes, rests, and slurs. The first system shows a melodic line on the upper staff and a rhythmic accompaniment on the lower staff. The second system continues the melodic line with some slurs and rests. The third system features a more complex melodic line with many slurs and rests. The fourth system shows a melodic line with many slurs and rests. The fifth system shows a melodic line with many slurs and rests. The notation is dense and appears to be a sketch or a working draft of a musical piece.



Handwritten musical notation on a single staff. It begins with a treble clef and a key signature of three flats (B-flat, E-flat, A-flat). The notation consists of a series of notes, including a half note followed by a dotted half note, and several eighth notes. A fermata is placed over the final note.

Handwritten musical notation on a single staff. It begins with a treble clef and a key signature of three flats. The notation consists of a series of notes, including a half note followed by a dotted half note, and several eighth notes. A fermata is placed over the final note.

Handwritten musical notation on a single staff. It begins with a treble clef and a key signature of three flats. The notation consists of a series of notes, including a half note followed by a dotted half note, and several eighth notes. A fermata is placed over the final note.

Handwritten musical notation on a single staff. It begins with a treble clef and a key signature of three flats. The notation consists of a series of notes, including a half note followed by a dotted half note, and several eighth notes. A fermata is placed over the final note.

Alfred Mace

2008

by Magic

B. Neer

8th on up/in

Five

Handwritten musical notation on a five-line staff. The key signature has three flats (B-flat, E-flat, A-flat). The time signature is common time (C). The notation includes a treble clef, a dynamic marking of *p* (piano), and a first ending bracket with a repeat sign. The notes are mostly quarter notes with stems pointing down.

Handwritten musical notation on a five-line staff, showing the key signature (three flats) and the treble clef.

Handwritten musical notation on a five-line staff. The key signature has three flats. The time signature is common time. The notation includes a treble clef, a dynamic marking of *p*, and a first ending bracket with a repeat sign. The notes are mostly quarter notes with stems pointing down.

Handwritten musical notation on a five-line staff, showing the key signature (three flats) and the treble clef.

Handwritten musical notation on a five-line staff. The key signature has three flats. The time signature is common time. The notation includes a treble clef, a dynamic marking of *p*, and a first ending bracket with a repeat sign. The notes are mostly quarter notes with stems pointing down.

Handwritten musical notation on a five-line staff, showing the key signature (three flats) and the treble clef.

Handwritten musical notation on a five-line staff. The key signature has three flats. The time signature is common time. The notation includes a treble clef, a dynamic marking of *p*, and a first ending bracket with a repeat sign. The notes are mostly quarter notes with stems pointing down.

Handwritten musical notation on a five-line staff, showing the key signature (three flats) and the treble clef.

Empty five-line musical staff.

Empty five-line musical staff.

Handwritten musical notation on a five-line staff. The notation includes a treble clef, a key signature of two flats (B-flat and E-flat), and a common time signature (C). The music consists of a series of notes, some with stems and beams, and some with accidentals. A brace is visible on the left side of the staff.

Handwritten musical notation on a five-line staff. The notation includes a treble clef, a key signature of two flats (B-flat and E-flat), and a common time signature (C). The music consists of a series of notes, some with stems and beams, and some with accidentals. A brace is visible on the left side of the staff.

Handwritten musical notation on a five-line staff. The notation includes a treble clef, a key signature of two flats (B-flat and E-flat), and a common time signature (C). The music consists of a series of notes, some with stems and beams, and some with accidentals. A brace is visible on the left side of the staff.

Handwritten musical notation on a five-line staff. The notation includes a treble clef, a key signature of two flats (B-flat and E-flat), and a common time signature (C). The music consists of a series of notes, some with stems and beams, and some with accidentals. A brace is visible on the left side of the staff.

Handwritten musical notation on a five-line staff, showing a few notes at the beginning of a piece.

Handwritten musical notation on a five-line staff, showing a few notes at the beginning of a piece.

Handwritten musical notation on a five-line staff, showing a few notes at the beginning of a piece.

Handwritten musical notation on a five-line staff, showing a few notes at the beginning of a piece.

Handwritten musical notation on a five-line staff. The key signature has two flats (Bb, Eb). The notation consists of a series of vertical strokes with stems, some of which are grouped with brackets. There are some markings above the staff, possibly indicating dynamics or articulation.

Handwritten musical notation on a five-line staff. The key signature has two flats (Bb, Eb). The notation includes vertical strokes with stems and some notes. The words "D. E. a FINE" are written below the staff. There are also some markings below the staff that look like "par. es. la".

Handwritten musical notation on a five-line staff. The key signature has two flats (Bb, Eb). The notation includes vertical strokes with stems and some notes. The word "Cora" is written above the staff.

Handwritten musical notation on a five-line staff. The key signature has two flats (Bb, Eb). The notation includes vertical strokes with stems and some notes. The words "Pando ando 21" are written below the staff. Below this staff, there is another staff with the text "3/4 op. to coro" and a signature.

Handwritten musical notation on a two-staff system. The top staff contains a melodic line with a long horizontal slur over the first two measures. The bottom staff contains a bass line with a few notes. The key signature has three flats and the time signature is common time.

Handwritten musical notation on a two-staff system, similar to the first system. The top staff has a melodic line with a slur, and the bottom staff has a bass line.

Handwritten musical notation on a two-staff system, similar to the first system. The top staff has a melodic line with a slur, and the bottom staff has a bass line.

Handwritten musical notation on a two-staff system, similar to the first system. The top staff has a melodic line with a slur, and the bottom staff has a bass line.

Handwritten musical notation on a two-staff system. The top staff has a treble clef, a key signature of three flats, and a tempo marking "♩ = 80". The bottom staff has a bass clef. The notation includes a series of notes with stems and beams, and some notes have a "+" sign above them.

Handwritten musical notation on a two-staff system, similar to the second system on the right page. It features a treble and bass staff with notes and stems.

Handwritten musical notation on a two-staff system, similar to the second system on the right page. It features a treble and bass staff with notes and stems.

Handwritten musical notation on a two-staff system, similar to the second system on the right page. It features a treble and bass staff with notes and stems.

Handwritten musical notation on a grand staff. The right hand features a triplet of eighth notes in the first measure, followed by a half note. The left hand plays a steady eighth-note accompaniment. A fermata is placed over the final note of the right hand.

Handwritten musical notation on a grand staff. The right hand has a quarter note followed by a triplet of eighth notes. The left hand continues with eighth-note accompaniment. A fermata is placed over the final note of the right hand.

Handwritten musical notation on a grand staff. The right hand has a quarter note followed by a triplet of eighth notes. The left hand continues with eighth-note accompaniment. A fermata is placed over the final note of the right hand.

Handwritten musical notation on a grand staff. The right hand has a quarter note followed by a triplet of eighth notes. The left hand continues with eighth-note accompaniment. A fermata is placed over the final note of the right hand.

Handwritten musical notation on a grand staff. The right hand has a quarter note followed by a triplet of eighth notes. The left hand continues with eighth-note accompaniment. A fermata is placed over the final note of the right hand.

Handwritten musical notation on a grand staff. The right hand has a quarter note followed by a triplet of eighth notes. The left hand continues with eighth-note accompaniment. A fermata is placed over the final note of the right hand.

Handwritten musical notation on a grand staff. The right hand has a quarter note followed by a triplet of eighth notes. The left hand continues with eighth-note accompaniment. A fermata is placed over the final note of the right hand.

01/11/2011

"Vedo a Vale"

A. Neer

Handwritten musical notation for the first system, featuring a grand staff with treble and bass clefs. The right hand has a melodic line with slurs and accents, while the left hand has a bass line with a slur and a fermata.

Handwritten musical notation for the second system, similar to the first, with a grand staff and melodic/bass lines.

Handwritten musical notation for the third system, including the instruction "rall" written in the bass staff.

Handwritten musical notation for the fourth system, including the instruction "a tempo" written in the bass staff.

1. Allegro

2. Vaso a Vela

Quasi Adagio

Sonata

A. Neevi
Op. 10 No. 1

Allegretto
C (pp) (volte)

3

6

(rit. obl.)
FINE

9

p
mf, ma dolce
f

11

p
f



13

15

17

19

20

SAVASANDIR

A. Naezi
grou rehearsal

Handwritten musical notation for the first system, featuring a treble clef, a tempo marking of quarter note = 80, and a series of notes with dynamic markings like 'p' and 'pp'.

Handwritten musical notation for the second system, continuing the melodic line with various dynamics and some scribbled-out passages.

Handwritten musical notation for the third system, showing a melodic phrase with a wavy line above it and a section with heavy scribbles.

Handwritten musical notation for the fourth system, including a bracketed section labeled '(before rehearsal)'.

Handwritten musical notation for the fifth system, featuring a treble clef and a series of notes with dynamic markings.

A single staff of music at the bottom of the page, mostly empty with a few notes and a dynamic marking 'p'.

2

3
SAVASANBIR
Allegro

DOC Studio

Handwritten musical notation on a grand staff. The top system consists of two staves with notes and rests. The bottom system also consists of two staves, with the right-hand staff containing a large, dense scribble of ink. There are some markings like 'p' and 'f' scattered throughout.

Handwritten musical notation on a grand staff. The staves are almost entirely obscured by a large, dense scribble of ink, with only a few notes and rests visible through the ink.

Handwritten musical notation on a grand staff. The top system has two staves with notes and rests. The bottom system has two staves, with the right-hand staff containing a large scribble. There are markings like 'p' and 'f'.

Handwritten musical notation on a grand staff. The top system has two staves with notes and rests. The bottom system has two staves, with the right-hand staff containing a large scribble. There are markings like 'p' and 'f'.

Handwritten musical notation on a grand staff. The staves are mostly empty, with a few notes and rests written on the left side.

5
SAAVANDIR
A. NAGI

piu Adagio

nell. molto

[Signature]

Tralustro *id. id.*

op. 24 n. 2

D. E.

opus
ut.

Handwritten musical score on ten staves. The score is written in a key signature of three flats (B-flat, E-flat, A-flat) and a common time signature (C). It consists of two systems of two staves each, followed by two single staves. The notation includes various notes, rests, and dynamic markings such as 'p', 'pp', 'f', 'mp', and 'pizzicato'. There are also some handwritten annotations and symbols like 'L3' and 'L4'.

Andrew Nocer

21-12-03

de Monte

q. 24 uol

A. Weiss

*De No Fine,
Poi regu*

©

- 2 -

2.2.2002
D. D. D.