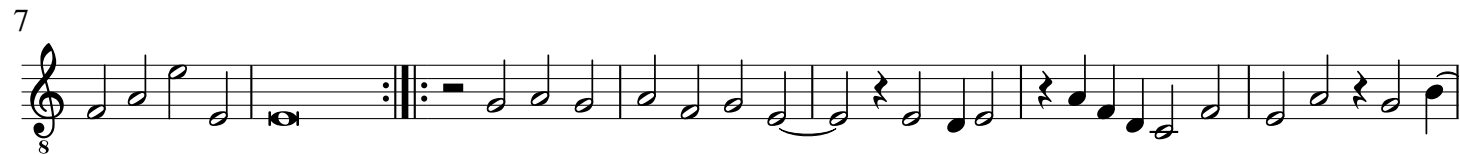


Quintus

# 1. Lachrimae Antiquae

John Dowland



# 2. Lachrimae Antiquae Novae

John Dowland



### 3. Lachrimae Gementes

John Dowland

8

14

20

### 4. Lachrimae Tristes

John Dowland

9

15

21

## 5. Lachrimae Coactae

John Dowland

Musical score for "Lachrimae Coactae" by John Dowland. The piece is in 4/2 time and G major. It consists of three staves of music. The first staff begins at measure 1 and ends with a double bar line and repeat sign at measure 10. The second staff begins at measure 10 and ends with a double bar line and repeat sign at measure 17. The third staff begins at measure 17 and ends with a double bar line and repeat sign at measure 24. The key signature has one sharp (F#).

## 6. Lachrimae Amantis

John Dowland

Musical score for "Lachrimae Amantis" by John Dowland. The piece is in 4/2 time and G major. It consists of three staves of music. The first staff begins at measure 1 and ends with a double bar line and repeat sign at measure 10. The second staff begins at measure 10 and ends with a double bar line and repeat sign at measure 20. The third staff begins at measure 20 and ends with a double bar line and repeat sign at measure 27. The key signature has one sharp (F#).

## 7. Lachrimae Verae

John Dowland

Musical score for "Lachrimae Verae" by John Dowland. The piece is in 4/2 time and G major. It consists of three staves of music. The first staff begins at measure 1 and ends with a double bar line and repeat sign at measure 9. The second staff begins at measure 9 and ends with a double bar line and repeat sign at measure 18. The third staff begins at measure 18 and ends with a double bar line and repeat sign at measure 25. The key signature has one sharp (F#).

# 8. Semper Dowland semper dolens

John Dowland

Musical score for 'Semper Dowland semper dolens' in 2/4 time, featuring a treble clef and a key signature of one sharp (F#). The score is divided into five systems, each starting with a measure number (8, 10, 19, 25, 30) and a common time signature of 8. The music consists of a single melodic line with various rhythmic patterns, including eighth and sixteenth notes, and rests. The piece concludes with a double bar line and repeat dots.

# 9. Sir Henry Umpton's Funerall

John Dowland

Musical score for 'Sir Henry Umpton's Funerall' in 2/4 time, featuring a treble clef and a key signature of two flats (Bb, Eb). The score is divided into three systems, each starting with a measure number (8, 15, 21) and a common time signature of 8. The music consists of a single melodic line with various rhythmic patterns, including eighth and sixteenth notes, and rests. The piece concludes with a double bar line and repeat dots.

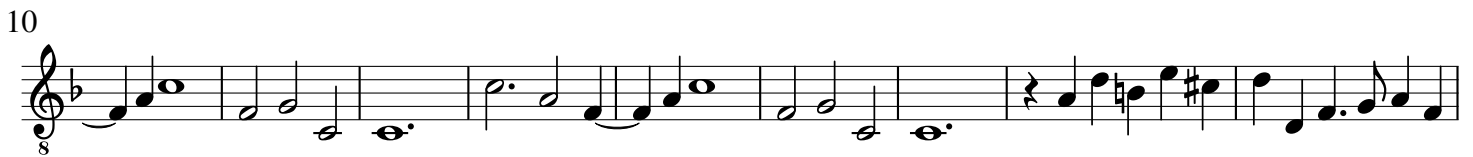
# 10. Mr. John Langton's Pavan

John Dowland



# 11. The King of Denmark's Galiard

John Dowland



## 12. The Earle of Essex Galiard

John Dowland

Musical score for 'The Earle of Essex Galiard' in 3/8 time, featuring three staves of music. The first staff begins at measure 10, the second at measure 18, and the third at measure 8. The key signature has two flats (B-flat and E-flat), and the piece concludes with a double bar line and repeat dots.

## 13. Sir John Souch his Galiard

John Dowland

Musical score for 'Sir John Souch his Galiard' in 3/8 time, featuring three staves of music. The first staff begins at measure 9, the second at measure 16, and the third at measure 8. The key signature has two flats (B-flat and E-flat), and the piece concludes with a double bar line and repeat dots.

## 14. M. Henry Noel his Galiard

John Dowland

Musical score for 'M. Henry Noel his Galiard' in 3/8 time, featuring three staves of music. The first staff begins at measure 13, the second at measure 25, and the third at measure 8. The key signature has two flats (B-flat and E-flat), and the piece concludes with a double bar line and repeat dots.

# 15. M. Giles Hobies Galiard

John Dowland

8  
11  
19

# 16. M. Nicholas Gryffith his Galiard

John Dowland

8  
12  
21

# 17. M. Thomas Collier his Galiard

John Dowland

9  
9  
19

# 18. Captaine Digorie Piper his Galiard

John Dowland

Musical score for 'Captaine Digorie Piper his Galiard' by John Dowland. The piece is in 3/8 time and D minor. It consists of three staves of music. The first staff starts at measure 1 and ends with a repeat sign. The second staff starts at measure 9 and ends with a repeat sign. The third staff starts at measure 18 and ends with a repeat sign.

# 19. M. Buctons Galiard

John Dowland

Musical score for 'M. Buctons Galiard' by John Dowland. The piece is in 3/8 time and D minor. It consists of three staves of music. The first staff starts at measure 1 and ends with a repeat sign. The second staff starts at measure 8 and ends with a repeat sign. The third staff starts at measure 17 and ends with a repeat sign.

# 20. Mistresse Nichols Almand

John Dowland

Musical score for 'Mistresse Nichols Almand' by John Dowland. The piece is in 4/4 time and D minor. It consists of two staves of music. The first staff starts at measure 1 and ends with a repeat sign. The second staff starts at measure 4 and ends with a repeat sign.



# 21. M. George Whitehead his Almand

John Dowland

