

Bassus

1. Lachrimae Antiquae

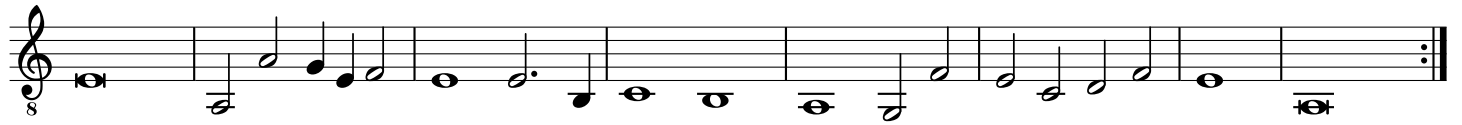
John Dowland



11



18



2. Lachrimae Antiquae Novae

John Dowland



10

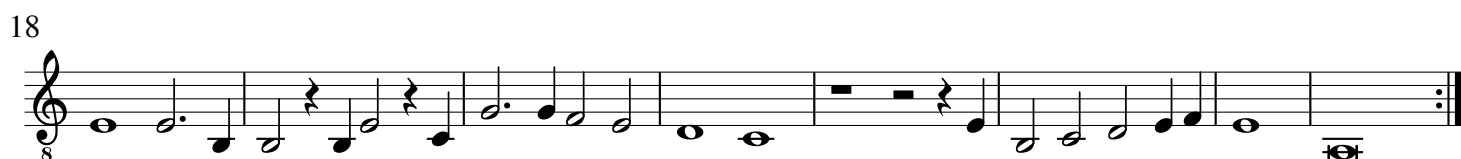
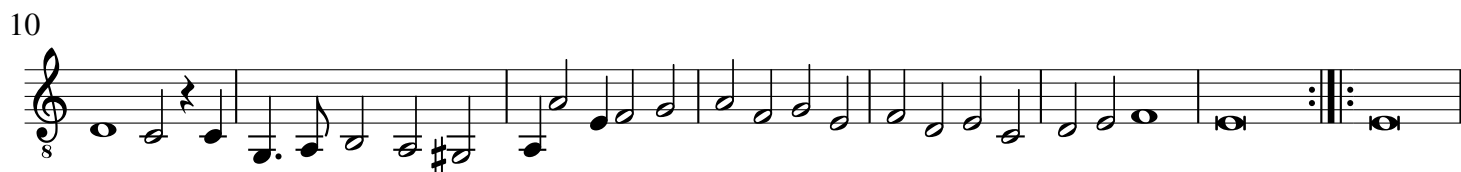
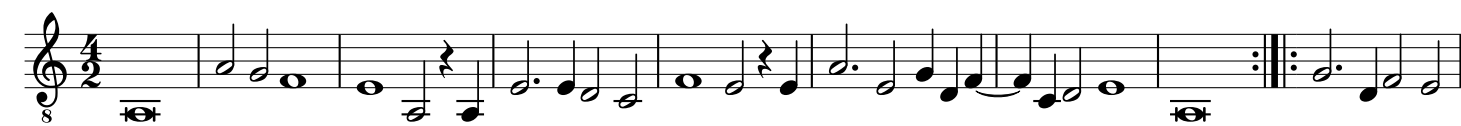


20



3. Lachrimae Gementes

John Dowland



4. Lachrimae Tristes

John Dowland



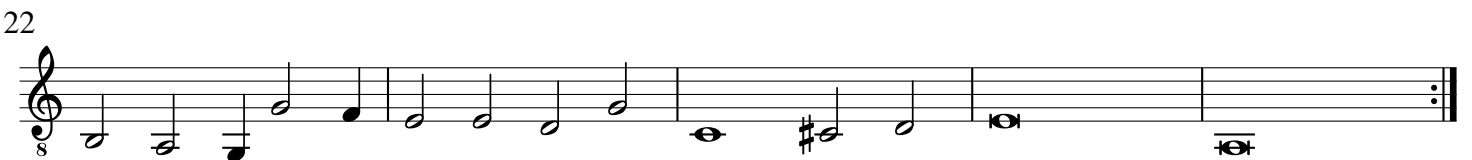
5. Lachrimae Coactae

John Dowland



6. Lachrimae Amantis

John Dowland



7. Lachrimae Verae

John Dowland

Musical score for 'Lachrimae Verae' by John Dowland, measures 1-16. The score is written in treble clef, 4/2 time signature, and G-clef. It begins with a common rest of 8 measures. The melody consists of a series of eighth and sixteenth notes, with some accidentals (sharps and naturals). There are repeat signs at measures 7 and 16.

8. Semper Dowland semper dolens

John Dowland

Musical score for 'Semper Dowland semper dolens' by John Dowland, measures 1-35. The score is written in treble clef, 4/2 time signature, and G-clef. It begins with a common rest of 8 measures. The melody starts with a double bar line and a '2' above it, indicating a second ending. The piece features a mix of eighth and sixteenth notes, with various accidentals and repeat signs throughout.

9. Sir Henry Umpton's Funerall

John Dowland

Musical score for 'Sir Henry Umpton's Funerall' in G minor, 4/4 time. The score consists of three staves of music. The first staff begins with a treble clef, a key signature of one flat (B-flat), and a 4/4 time signature. It contains 12 measures of music, including a repeat sign. The second staff starts at measure 13 and contains 12 more measures. The third staff starts at measure 21 and contains 12 final measures, ending with a double bar line and repeat dots.

10. Mr. John Langton's Pavan

John Dowland

Musical score for 'Mr. John Langton's Pavan' in G minor, 4/4 time. The score consists of three staves of music. The first staff begins with a treble clef, a key signature of one flat (B-flat), and a 4/4 time signature. It contains 10 measures of music, including a repeat sign. The second staff starts at measure 10 and contains 10 more measures. The third staff starts at measure 17 and contains 10 final measures, ending with a double bar line and repeat dots.

11. The King of Denmark's Galiard

John Dowland

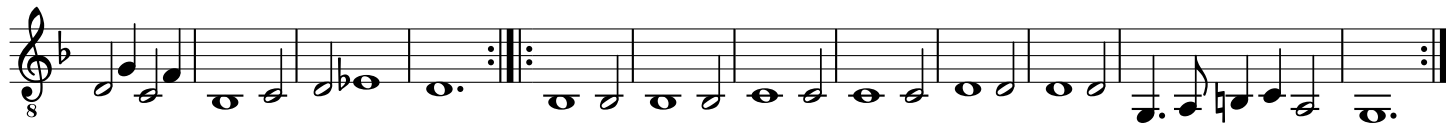
Musical score for 'The King of Denmark's Galiard' in G minor, 3/4 time. The score consists of two staves of music. The first staff begins with a treble clef, a key signature of one flat (B-flat), and a 3/4 time signature. It contains 15 measures of music. The second staff starts at measure 15 and contains 15 final measures, ending with a double bar line and repeat dots.

12. The Earle of Essex Galiard

John Dowland



13



13. Sir John Souch his Galiard

John Dowland



10



18



14. M. Henry Noel his Galiard

John Dowland



13



24



15. M. Giles Hobies Galiard

John Dowland

Musical notation for '15. M. Giles Hobies Galiard'. The piece is in 3/8 time and consists of two staves. The first staff begins with a treble clef, a key signature of one flat (B-flat), and a common time signature of 8. The melody features a mix of eighth and sixteenth notes, with a repeat sign at the end of the first line. The second staff starts at measure 13 and continues the melody with similar rhythmic patterns and a final repeat sign.

16. M. Nicholas Gryffith his Galiard

John Dowland

Musical notation for '16. M. Nicholas Gryffith his Galiard'. The piece is in 3/8 time and consists of four staves. The first staff begins with a treble clef, a key signature of one flat (B-flat), and a common time signature of 8. The melody is composed of eighth and sixteenth notes, with a repeat sign at the end of the first line. The second staff starts at measure 10 and continues the melody. The third staff starts at measure 16 and continues the melody. The fourth staff starts at measure 24 and concludes the piece with a final repeat sign.

17. M. Thomas Collier his Galiard

John Dowland

Musical notation for '17. M. Thomas Collier his Galiard'. The piece is in 3/8 time and consists of two staves. The first staff begins with a treble clef, a key signature of one flat (B-flat), and a common time signature of 8. The melody features eighth and sixteenth notes, with a repeat sign at the end of the first line. The second staff starts at measure 14 and continues the melody with a final repeat sign.

18. Captaine Digorie Piper his Galiard

John Dowland

Musical notation for 'Captaine Digorie Piper his Galiard'. The piece is in 3/8 time and D minor. It consists of two staves. The first staff begins with a treble clef, a key signature of one flat, and a 3/8 time signature. The melody starts with a half note G4, followed by quarter notes A4, Bb4, C5, D5, E5, F5, G5, A5, Bb5, C6, D6, E6, F6, G6, A6, Bb6, C7, D7, E7, F7, G7, A7, Bb7, C8, D8, E8, F8, G8, A8, Bb8, C9, D9, E9, F9, G9, A9, Bb9, C10, D10, E10, F10, G10, A10, Bb10, C11, D11, E11, F11, G11, A11, Bb11, C12, D12, E12, F12, G12, A12, Bb12, C13, D13, E13, F13, G13, A13, Bb13, C14, D14, E14, F14, G14, A14, Bb14, C15, D15, E15, F15, G15, A15, Bb15, C16, D16, E16, F16, G16, A16, Bb16, C17, D17, E17, F17, G17, A17, Bb17, C18, D18, E18, F18, G18, A18, Bb18, C19, D19, E19, F19, G19, A19, Bb19, C20, D20, E20, F20, G20, A20, Bb20, C21, D21, E21, F21, G21, A21, Bb21, C22, D22, E22, F22, G22, A22, Bb22, C23, D23, E23, F23, G23, A23, Bb23, C24, D24, E24, F24, G24, A24, Bb24, C25, D25, E25, F25, G25, A25, Bb25, C26, D26, E26, F26, G26, A26, Bb26, C27, D27, E27, F27, G27, A27, Bb27, C28, D28, E28, F28, G28, A28, Bb28, C29, D29, E29, F29, G29, A29, Bb29, C30, D30, E30, F30, G30, A30, Bb30, C31, D31, E31, F31, G31, A31, Bb31, C32, D32, E32, F32, G32, A32, Bb32, C33, D33, E33, F33, G33, A33, Bb33, C34, D34, E34, F34, G34, A34, Bb34, C35, D35, E35, F35, G35, A35, Bb35, C36, D36, E36, F36, G36, A36, Bb36, C37, D37, E37, F37, G37, A37, Bb37, C38, D38, E38, F38, G38, A38, Bb38, C39, D39, E39, F39, G39, A39, Bb39, C40, D40, E40, F40, G40, A40, Bb40, C41, D41, E41, F41, G41, A41, Bb41, C42, D42, E42, F42, G42, A42, Bb42, C43, D43, E43, F43, G43, A43, Bb43, C44, D44, E44, F44, G44, A44, Bb44, C45, D45, E45, F45, G45, A45, Bb45, C46, D46, E46, F46, G46, A46, Bb46, C47, D47, E47, F47, G47, A47, Bb47, C48, D48, E48, F48, G48, A48, Bb48, C49, D49, E49, F49, G49, A49, Bb49, C50, D50, E50, F50, G50, A50, Bb50, C51, D51, E51, F51, G51, A51, Bb51, C52, D52, E52, F52, G52, A52, Bb52, C53, D53, E53, F53, G53, A53, Bb53, C54, D54, E54, F54, G54, A54, Bb54, C55, D55, E55, F55, G55, A55, Bb55, C56, D56, E56, F56, G56, A56, Bb56, C57, D57, E57, F57, G57, A57, Bb57, C58, D58, E58, F58, G58, A58, Bb58, C59, D59, E59, F59, G59, A59, Bb59, C60, D60, E60, F60, G60, A60, Bb60, C61, D61, E61, F61, G61, A61, Bb61, C62, D62, E62, F62, G62, A62, Bb62, C63, D63, E63, F63, G63, A63, Bb63, C64, D64, E64, F64, G64, A64, Bb64, C65, D65, E65, F65, G65, A65, Bb65, C66, D66, E66, F66, G66, A66, Bb66, C67, D67, E67, F67, G67, A67, Bb67, C68, D68, E68, F68, G68, A68, Bb68, C69, D69, E69, F69, G69, A69, Bb69, C70, D70, E70, F70, G70, A70, Bb70, C71, D71, E71, F71, G71, A71, Bb71, C72, D72, E72, F72, G72, A72, Bb72, C73, D73, E73, F73, G73, A73, Bb73, C74, D74, E74, F74, G74, A74, Bb74, C75, D75, E75, F75, G75, A75, Bb75, C76, D76, E76, F76, G76, A76, Bb76, C77, D77, E77, F77, G77, A77, Bb77, C78, D78, E78, F78, G78, A78, Bb78, C79, D79, E79, F79, G79, A79, Bb79, C80, D80, E80, F80, G80, A80, Bb80, C81, D81, E81, F81, G81, A81, Bb81, C82, D82, E82, F82, G82, A82, Bb82, C83, D83, E83, F83, G83, A83, Bb83, C84, D84, E84, F84, G84, A84, Bb84, C85, D85, E85, F85, G85, A85, Bb85, C86, D86, E86, F86, G86, A86, Bb86, C87, D87, E87, F87, G87, A87, Bb87, C88, D88, E88, F88, G88, A88, Bb88, C89, D89, E89, F89, G89, A89, Bb89, C90, D90, E90, F90, G90, A90, Bb90, C91, D91, E91, F91, G91, A91, Bb91, C92, D92, E92, F92, G92, A92, Bb92, C93, D93, E93, F93, G93, A93, Bb93, C94, D94, E94, F94, G94, A94, Bb94, C95, D95, E95, F95, G95, A95, Bb95, C96, D96, E96, F96, G96, A96, Bb96, C97, D97, E97, F97, G97, A97, Bb97, C98, D98, E98, F98, G98, A98, Bb98, C99, D99, E99, F99, G99, A99, Bb99, C100, D100, E100, F100, G100, A100, Bb100, C101, D101, E101, F101, G101, A101, Bb101, C102, D102, E102, F102, G102, A102, Bb102, C103, D103, E103, F103, G103, A103, Bb103, C104, D104, E104, F104, G104, A104, Bb104, C105, D105, E105, F105, G105, A105, Bb105, C106, D106, E106, F106, G106, A106, Bb106, C107, D107, E107, F107, G107, A107, Bb107, C108, D108, E108, F108, G108, A108, Bb108, C109, D109, E109, F109, G109, A109, Bb109, C110, D110, E110, F110, G110, A110, Bb110, C111, D111, E111, F111, G111, A111, Bb111, C112, D112, E112, F112, G112, A112, Bb112, C113, D113, E113, F113, G113, A113, Bb113, C114, D114, E114, F114, G114, A114, Bb114, C115, D115, E115, F115, G115, A115, Bb115, C116, D116, E116, F116, G116, A116, Bb116, C117, D117, E117, F117, G117, A117, Bb117, C118, D118, E118, F118, G118, A118, Bb118, C119, D119, E119, F119, G119, A119, Bb119, C120, D120, E120, F120, G120, A120, Bb120, C121, D121, E121, F121, G121, A121, Bb121, C122, D122, E122, F122, G122, A122, Bb122, C123, D123, E123, F123, G123, A123, Bb123, C124, D124, E124, F124, G124, A124, Bb124, C125, D125, E125, F125, G125, A125, Bb125, C126, D126, E126, F126, G126, A126, Bb126, C127, D127, E127, F127, G127, A127, Bb127, C128, D128, E128, F128, G128, A128, Bb128, C129, D129, E129, F129, G129, A129, Bb129, C130, D130, E130, F130, G130, A130, Bb130, C131, D131, E131, F131, G131, A131, Bb131, C132, D132, E132, F132, G132, A132, Bb132, C133, D133, E133, F133, G133, A133, Bb133, C134, D134, E134, F134, G134, A134, Bb134, C135, D135, E135, F135, G135, A135, Bb135, C136, D136, E136, F136, G136, A136, Bb136, C137, D137, E137, F137, G137, A137, Bb137, C138, D138, E138, F138, G138, A138, Bb138, C139, D139, E139, F139, G139, A139, Bb139, C140, D140, E140, F140, G140, A140, Bb140, C141, D141, E141, F141, G141, A141, Bb141, C142, D142, E142, F142, G142, A142, Bb142, C143, D143, E143, F143, G143, A143, Bb143, C144, D144, E144, F144, G144, A144, Bb144, C145, D145, E145, F145, G145, A145, Bb145, C146, D146, E146, F146, G146, A146, Bb146, C147, D147, E147, F147, G147, A147, Bb147, C148, D148, E148, F148, G148, A148, Bb148, C149, D149, E149, F149, G149, A149, Bb149, C150, D150, E150, F150, G150, A150, Bb150, C151, D151, E151, F151, G151, A151, Bb151, C152, D152, E152, F152, G152, A152, Bb152, C153, D153, E153, F153, G153, A153, Bb153, C154, D154, E154, F154, G154, A154, Bb154, C155, D155, E155, F155, G155, A155, Bb155, C156, D156, E156, F156, G156, A156, Bb156, C157, D157, E157, F157, G157, A157, Bb157, C158, D158, E158, F158, G158, A158, Bb158, C159, D159, E159, F159, G159, A159, Bb159, C160, D160, E160, F160, G160, A160, Bb160, C161, D161, E161, F161, G161, A161, Bb161, C162, D162, E162, F162, G162, A162, Bb162, C163, D163, E163, F163, G163, A163, Bb163, C164, D164, E164, F164, G164, A164, Bb164, C165, D165, E165, F165, G165, A165, Bb165, C166, D166, E166, F166, G166, A166, Bb166, C167, D167, E167, F167, G167, A167, Bb167, C168, D168, E168, F168, G168, A168, Bb168, C169, D169, E169, F169, G169, A169, Bb169, C170, D170, E170, F170, G170, A170, Bb170, C171, D171, E171, F171, G171, A171, Bb171, C172, D172, E172, F172, G172, A172, Bb172, C173, D173, E173, F173, G173, A173, Bb173, C174, D174, E174, F174, G174, A174, Bb174, C175, D175, E175, F175, G175, A175, Bb175, C176, D176, E176, F176, G176, A176, Bb176, C177, D177, E177, F177, G177, A177, Bb177, C178, D178, E178, F178, G178, A178, Bb178, C179, D179, E179, F179, G179, A179, Bb179, C180, D180, E180, F180, G180, A180, Bb180, C181, D181, E181, F181, G181, A181, Bb181, C182, D182, E182, F182, G182, A182, Bb182, C183, D183, E183, F183, G183, A183, Bb183, C184, D184, E184, F184, G184, A184, Bb184, C185, D185, E185, F185, G185, A185, Bb185, C186, D186, E186, F186, G186, A186, Bb186, C187, D187, E187, F187, G187, A187, Bb187, C188, D188, E188, F188, G188, A188, Bb188, C189, D189, E189, F189, G189, A189, Bb189, C190, D190, E190, F190, G190, A190, Bb190, C191, D191, E191, F191, G191, A191, Bb191, C192, D192, E192, F192, G192, A192, Bb192, C193, D193, E193, F193, G193, A193, Bb193, C194, D194, E194, F194, G194, A194, Bb194, C195, D195, E195, F195, G195, A195, Bb195, C196, D196, E196, F196, G196, A196, Bb196, C197, D197, E197, F197, G197, A197, Bb197, C198, D198, E198, F198, G198, A198, Bb198, C199, D199, E199, F199, G199, A199, Bb199, C200, D200, E200, F200, G200, A200, Bb200, C201, D201, E201, F201, G201, A201, Bb201, C202, D202, E202, F202, G202, A202, Bb202, C203, D203, E203, F203, G203, A203, Bb203, C204, D204, E204, F204, G204, A204, Bb204, C205, D205, E205, F205, G205, A205, Bb205, C206, D206, E206, F206, G206, A206, Bb206, C207, D207, E207, F207, G207, A207, Bb207, C208, D208, E208, F208, G208, A208, Bb208, C209, D209, E209, F209, G209, A209, Bb209, C210, D210, E210, F210, G210, A210, Bb210, C211, D211, E211, F211, G211, A211, Bb211, C212, D212, E212, F212, G212, A212, Bb212, C213, D213, E213, F213, G213, A213, Bb213, C214, D214, E214, F214, G214, A214, Bb214, C215, D215, E215, F215, G215, A215, Bb215, C216, D216, E216, F216, G216, A216, Bb216, C217, D217, E217, F217, G217, A217, Bb217, C218, D218, E218, F218, G218, A218, Bb218, C219, D219, E219, F219, G219, A219, Bb219, C220, D220, E220, F220, G220, A220, Bb220, C221, D221, E221, F221, G221, A221, Bb221, C222, D222, E222, F222, G222, A222, Bb222, C223, D223, E223, F223, G223, A223, Bb223, C224, D224, E224, F224, G224, A224, Bb224, C225, D225, E225, F225, G225, A225, Bb225, C226, D226, E226, F226, G226, A226, Bb226, C227, D227, E227, F227, G227, A227, Bb227, C228, D228, E228, F228, G228, A228, Bb228, C229, D229, E229, F229, G229, A229, Bb229, C230, D230, E230, F230, G230, A230, Bb230, C231, D231, E231, F231, G231, A231, Bb231, C232, D232, E232, F232, G232, A232, Bb232, C233, D233, E233, F233, G233, A233, Bb233, C234, D234, E234, F234, G234, A234, Bb234, C235, D235, E235, F235, G235, A235, Bb235, C236, D236, E236, F236, G236, A236, Bb236, C237, D237, E237, F237, G237, A237, Bb237, C238, D238, E238, F238, G238, A238, Bb238, C239, D239, E239, F239, G239, A239, Bb239, C240, D240, E240, F240, G240, A240, Bb240, C241, D241, E241, F241, G241, A241, Bb241, C242, D242, E242, F242, G242, A242, Bb242, C243, D243, E243, F243, G243, A243, Bb243, C244, D244, E244, F244, G244, A244, Bb244, C245, D245, E245, F245, G245, A245, Bb245, C246, D246, E246, F246, G246, A246, Bb246, C247, D247, E247, F247, G247, A247, Bb247, C248, D248, E248, F248, G248, A248, Bb248, C249, D249, E249, F249, G249, A249, Bb249, C250, D250, E250, F250, G250, A250, Bb250, C251, D251, E251, F251, G251, A251, Bb251, C252, D252, E252, F252, G252, A252, Bb252, C253, D253, E253, F253, G253, A253, Bb253, C254, D254, E254, F254, G254, A254, Bb254, C255, D255, E255, F255, G255, A255, Bb255, C256, D256, E256, F256, G256, A256, Bb256, C257, D257, E257, F257, G257, A257, Bb257, C258, D258, E258, F258, G258, A258, Bb258, C259, D259, E259, F259, G259, A259, Bb259, C260, D260, E260, F260, G260, A260, Bb260, C261, D261, E261, F261, G261, A261, Bb261, C262, D262, E262, F262, G262, A262, Bb262, C263, D263, E263, F263, G263, A263, Bb263, C264, D264, E264, F264, G264, A264, Bb264, C265, D265, E265, F265, G265, A265, Bb265, C266, D266, E266, F266, G266, A266, Bb266, C267, D267, E267, F267, G267, A267, Bb267, C268, D268, E268, F268, G268, A268, Bb268, C269, D269, E269, F269, G269, A269, Bb269, C270, D270, E270, F270, G270, A270, Bb270, C271, D271, E271, F271, G271, A271, Bb271, C272, D272, E272, F272, G272, A272, Bb272, C273, D273, E273, F273, G273, A273, Bb273, C274, D274, E274, F274, G274, A274, Bb274, C275, D275, E275, F275, G275, A275, Bb275, C276, D276, E276, F276, G276, A276, Bb276, C277, D277, E277, F277, G277, A277, Bb277, C278, D278, E278, F278, G278, A278, Bb278, C279, D279, E279, F279, G279, A279, Bb279, C280, D280, E280, F280, G280, A280, Bb280, C281, D281, E281, F281, G281, A281, Bb281, C282, D282, E282, F282, G282, A282, Bb282, C283, D283, E283, F283, G283, A283, Bb283, C284, D284, E284, F284, G284, A284, Bb284, C285, D285, E285, F285, G285, A285, Bb285, C286, D286, E286, F286, G286, A286, Bb286, C287, D287, E287, F287, G287, A287, Bb287, C288, D288, E288, F288, G288, A288, Bb288, C289, D289, E289, F289, G289, A289, Bb289, C290, D290, E290, F290, G290, A290, Bb290, C291, D291, E291, F291, G291, A291, Bb291, C292, D292, E292, F292, G292, A292, Bb292, C293, D293, E293, F293, G293, A293, Bb293, C294, D294, E294, F294, G294, A294, Bb294, C295, D295, E295, F295, G295, A295, Bb295, C296, D296, E296, F296, G296, A296, Bb296, C297, D297, E297, F297, G297, A297, Bb297, C298, D298, E298, F298, G298, A298, Bb298, C299, D299, E299, F299, G299, A299, Bb299, C300, D300, E300, F300, G300, A300, Bb300, C301, D301, E301, F301, G301, A301, Bb301, C302, D302, E302, F302, G302, A302, Bb302, C303, D303, E303, F303, G303, A303, Bb303, C304, D304, E304, F304, G304, A304, Bb304, C305, D305, E305, F305, G305, A305, Bb305, C306, D306, E306, F306, G306, A306, Bb306, C307, D307, E307, F307, G307, A307, Bb307, C308, D308, E308, F308, G308, A308, Bb308, C309, D309, E309, F309, G309, A309, Bb309, C310, D310, E310, F310, G310, A310, Bb310, C311, D311, E311, F311, G311, A311, Bb311, C312, D312, E312, F312, G312, A312, Bb312, C313, D313, E313, F313, G313, A313, Bb313, C314, D314, E314, F314, G314, A314, Bb314, C315, D315, E315, F315, G315, A315, Bb315, C316, D316, E316, F316, G316, A316, Bb316, C317, D317, E317, F317, G317, A317, Bb317, C318, D318, E318, F318, G318, A318, Bb318, C319, D319, E319, F319, G319, A319, Bb319, C320, D320, E320, F320, G320, A320, Bb320, C321, D321, E321, F321, G321, A321, Bb321, C322, D322, E322, F322, G322, A322, Bb322, C323, D323, E323, F323, G323, A323, Bb323, C324, D324, E324, F324, G324, A324, Bb324, C325, D325, E325, F325, G325, A325, Bb325, C326, D326, E326, F326, G326, A326, Bb326, C327, D327, E327, F327, G327, A327, Bb327, C328, D328, E328, F328, G328, A328, Bb328, C329, D329, E329, F329, G329, A329, Bb329, C330, D330, E330, F330, G330, A330, Bb330, C331, D331, E331, F331, G331, A331, Bb331, C332, D332, E332, F332, G332, A332, Bb332, C333, D333, E333, F333, G333, A333, Bb333, C334, D334, E334, F334, G334, A334, Bb334, C335, D335, E335, F335, G335, A335, Bb335, C336, D336, E336, F336, G336, A336, Bb336, C337, D337, E337, F337, G337, A337, Bb337, C338, D338, E338, F338, G338, A338, Bb338, C339, D339, E339, F339, G339, A339, Bb339, C340, D340, E340, F340, G340, A340, Bb340, C341, D341, E341, F341, G341, A341, Bb341, C342, D342, E342, F342, G342, A342, Bb342, C343, D343, E343, F343, G343, A343, Bb343, C344, D344, E344, F344, G344, A344, Bb344, C345, D345, E345, F345, G345, A345, Bb345, C346, D346, E346, F346, G346, A346, Bb346, C347, D347, E347, F347, G347, A347, Bb347, C348, D348, E348, F348, G348, A348, Bb348, C349, D349, E349, F349, G349, A349, Bb349, C350, D350, E350, F350, G350, A350, Bb350, C351, D351, E351, F351, G351, A351, Bb351, C352, D352, E352, F352, G352, A352, Bb352, C353, D353, E353, F353, G353, A353, Bb353, C354, D354, E354, F354, G354, A354, Bb354, C355, D355, E355, F355, G355, A355, Bb355, C356, D356, E356, F356, G356, A356, Bb356, C357, D357, E357, F357, G357, A357, Bb357, C358, D358, E358, F358, G358, A358, Bb358, C359, D359, E359, F359, G359, A359, Bb359, C360, D360, E360, F360, G360, A360, Bb360, C361, D361, E361, F361, G361, A361, Bb361, C362, D362, E362, F