

Allo.
(108 = ♩.)

avec sordina

spettres

avec sordina

avec sordina

avec sordina

avec.

Dieu.



Ms. 891

Handwritten musical score for the first system, consisting of four staves. The top staff is in treble clef with a key signature of one sharp (F#) and a common time signature (C). It contains a melodic line with slurs and accents, marked with *mf* and *dim.*. The second and third staves are in alto and tenor clefs, respectively, and contain rhythmic accompaniment with slurs. The bottom staff is in bass clef and contains a bass line with slurs. A signature is visible at the end of the system.

Handwritten musical score for the second system, consisting of four staves. The top staff is in treble clef with a key signature of one sharp (F#) and a common time signature (C). It contains a melodic line with slurs and accents, marked with *f*. The second and third staves are in alto and tenor clefs, respectively, and contain rhythmic accompaniment with slurs. The bottom staff is in bass clef and contains a bass line with slurs.

Two empty musical staves at the bottom of the page, consisting of four-line staves without any notation.

Handwritten musical score for the first system, consisting of four staves. The notation includes treble and bass clefs, a key signature of one sharp (F#), and various rhythmic values such as quarter, eighth, and sixteenth notes. The music is written in a cursive, historical style.



Handwritten musical score for the second system, consisting of four staves. This system features dynamic markings such as "p" (piano) and "f" (forte), and includes some performance instructions like "arco" and "pizz." (pizzicato). The notation continues with various rhythmic patterns and slurs.

Two empty musical staves at the bottom of the page, consisting of five-line systems.

Handwritten musical score system 1, consisting of four staves. The top staff is in treble clef with a key signature of one sharp (F#). The second and third staves are in alto clef with a key signature of one sharp (F#). The bottom staff is in bass clef with a key signature of one sharp (F#). The system contains six measures of music with various notes, rests, and dynamic markings such as *pp* and *ppp*. There are also some handwritten annotations and slurs.

Handwritten musical score system 2, consisting of four staves. The top staff is in treble clef with a key signature of one sharp (F#). The second and third staves are in alto clef with a key signature of one sharp (F#). The bottom staff is in bass clef with a key signature of one sharp (F#). The system contains six measures of music with various notes, rests, and dynamic markings such as *pp* and *ppp*. There are also some handwritten annotations and slurs.



(stay la Louisiana)

Handwritten musical score for the first system, consisting of four staves. The top staff is in treble clef with a key signature of one sharp (F#). The second and third staves are in alto clef with a key signature of two sharps (F# and C#). The bottom staff is in bass clef with a key signature of one sharp (F#). The music includes piano (p) and dynamic markings, and is annotated with "(stay la Louisiana)".



resc.

stay la Louisiana

stay la Louisiana

stay la Louisiana

Handwritten musical score for the second system, consisting of four staves. The top staff is in treble clef with a key signature of one sharp (F#). The second, third, and fourth staves are in alto, alto, and bass clefs respectively, all with a key signature of one sharp (F#). The music includes lyrics "stay la Louisiana" and dynamic markings like "resc." and "p". The system concludes with a double bar line and the number "4" on each staff.

Più All: (152 = ♩)

Handwritten musical score for the first system, featuring four staves with treble, alto, tenor, and bass clefs. The music is in 4/4 time with a key signature of one sharp (F#). The first staff contains a complex melodic line with many sixteenth notes and slurs. The other three staves provide harmonic accompaniment with various note values and rests.

Handwritten musical score for the second system, featuring four staves with treble, alto, tenor, and bass clefs. The music continues in 4/4 time with a key signature of one sharp (F#). The notation includes dynamic markings such as "sempre f" and "p" across the staves. The melodic line in the first staff continues with intricate sixteenth-note patterns.

Handwritten musical score for the first system, consisting of four staves. The top staff is in treble clef with a key signature of one sharp (F#). The second staff contains red scribbles and annotations over the notes. The third and fourth staves are in bass clef. The music includes various rhythmic values and articulation marks.



Two empty musical staves, consisting of five lines each, positioned between the first and second systems of music.

Handwritten musical score for the second system, consisting of four staves. The top staff is in treble clef with a key signature of one sharp (F#). The second staff has a dynamic marking of *zinf*. The third and fourth staves are in bass clef. The music includes various rhythmic values and articulation marks.



Two empty musical staves, consisting of five lines each, positioned at the bottom of the page.

Handwritten musical score for the first system, consisting of four staves. The music is written in treble clef with a key signature of one sharp (F#). The first staff contains a melodic line with a large slur and a fermata over the first measure, followed by eighth and sixteenth notes. The second and third staves provide harmonic accompaniment with chords and moving lines. The fourth staff is a bass line. Dynamic markings include *mf* (mezzo-forte) and *f* (forte). There are also accents and slurs throughout the piece.

Handwritten musical score for the second system, consisting of four staves. The music is written in treble clef with a key signature of one sharp (F#). The first staff begins with a *dim* (diminuendo) marking. The music features a variety of note values, including eighth and sixteenth notes, and rests. The second and third staves continue the harmonic accompaniment. The fourth staff is a bass line. The *dim* marking is repeated in the second and third staves. The system concludes with a fermata over the final measure.



Handwritten musical score on four staves. The first three staves are in treble clef with a key signature of one sharp (F#) and a common time signature (C). The fourth staff is in bass clef with a key signature of one sharp (F#) and a common time signature (C). Each staff begins with the dynamic marking *p sempre*.



Handwritten musical score on four staves. The first three staves are in treble clef with a key signature of one sharp (F#) and a common time signature (C). The fourth staff is in bass clef with a key signature of one sharp (F#) and a common time signature (C). The notation is more complex, featuring many beamed notes and some crossed-out passages. There are two arrows pointing to specific notes in the fourth staff.

The first system of the handwritten musical score consists of four staves. The top two staves are in treble clef, and the bottom two are in bass clef. The key signature is one sharp (F#). The music is written in a common time signature. The first two staves contain melodic lines with various rhythmic patterns, including eighth and sixteenth notes. The bottom two staves provide a harmonic accompaniment with chords and moving lines. The word "cresc" is written below the first three staves, indicating a crescendo. The system concludes with a double bar line.

The second system of the handwritten musical score also consists of four staves, maintaining the same clefs and key signature as the first system. The musical notation continues with similar rhythmic and melodic patterns. The bottom two staves feature more complex chordal structures and some accidentals. Dynamic markings include "f" (forte) and accents (^) placed above certain notes. The system ends with a double bar line.



Handwritten musical score for the first system, consisting of four staves. The notation includes various note values, slurs, and ties, indicating a complex melodic and harmonic structure. The key signature is one sharp (F#).



Handwritten musical score for the second system, consisting of four staves. The notation includes rests, ties, and dynamic markings such as 'f' (forte). The key signature remains one sharp (F#).

Handwritten musical score for the first system, consisting of four staves. The top two staves are in treble clef, and the bottom two are in bass clef. The music is written in a key signature of one sharp (F#). The first staff begins with a treble clef, a key signature of one sharp, and a common time signature. It contains several measures of music with notes, rests, and slurs. A dynamic marking 'dim.' is present. The second staff also starts with a treble clef and one sharp, and contains similar musical notation with a 'dim.' marking. The third staff is in bass clef and contains a triplet of eighth notes followed by other notes and slurs, with a 'dim.' marking. The fourth staff is in bass clef and contains a few notes with a 'mf' marking. The system concludes with a double bar line.

Handwritten musical score for the second system, consisting of four staves. The top two staves are in treble clef, and the bottom two are in bass clef. The music is written in a key signature of one sharp (F#). The first staff begins with a treble clef, a key signature of one sharp, and a common time signature. It contains several measures of music with notes, rests, and slurs. The second staff also starts with a treble clef and one sharp, and contains similar musical notation. The third staff is in bass clef and contains a few notes with a 'mf' marking. The fourth staff is in bass clef and contains a few notes with a 'dim.' marking. The system concludes with a double bar line.



Handwritten musical score for the first system, consisting of four staves. The music is in G major and 2/4 time. The first staff contains a melodic line with slurs and ties. The second staff has a dynamic marking of *mf* and a *dim.* marking. The third staff features a *#f* dynamic marking and a *dim.* marking. The fourth staff is a bass line with a *p* dynamic marking.



Handwritten musical score for the second system, consisting of four staves. The music continues in G major and 2/4 time. The first staff has a *dolce* marking. The second staff has a *dolce* marking. The third staff has a *dolce* marking. The fourth staff has a *dolce* marking and a *tan* marking.

Handwritten musical score for four staves, measures 8-11. The music is in G major and 4/4 time. The first staff begins with a fermata over a whole note G, followed by a melodic line. The second staff contains chords. The third and fourth staves have a similar melodic line. Dynamics include *cresc.*, *dim.*, and *p espressivo*. A fermata is present over the final note of the first staff.

Handwritten musical score for four staves, measures 12-15. The music continues in G major and 4/4 time. The first staff has a melodic line with a fermata. The second staff has a similar melodic line. The third staff contains chords. The fourth staff has a melodic line. Dynamics include *pp* and *piu dolce*. A fermata is present over the final note of the first staff.

Handwritten musical score for the first system, consisting of four staves. The notation includes various note values, rests, and dynamic markings such as "cresc". There are two red circular library stamps: one in the top right corner and another in the bottom right corner of the system.

Handwritten musical score for the second system, consisting of four staves. The notation includes various note values, rests, and dynamic markings such as "f". The bottom staff features a complex rhythmic pattern with many sixteenth notes.

Handwritten musical score for the first system, consisting of four staves. The top staff is in treble clef with a key signature of one sharp (F#). It begins with a series of eighth notes, followed by a half note with a sharp sign above it, and then a series of eighth notes. The second staff is in treble clef and contains rests followed by a half note with a sharp sign above it. The third staff is in bass clef and contains rests followed by a half note. The fourth staff is in bass clef and contains rests followed by a half note with a sharp sign above it. Dynamic markings include 'f' and 'sempre f'.

Handwritten musical score for the second system, consisting of four staves. The top staff is in treble clef with a key signature of one sharp (F#). It begins with a rest, followed by a series of eighth notes. The second staff is in treble clef and contains a series of eighth notes. The third staff is in bass clef and contains a series of eighth notes. The fourth staff is in bass clef and contains a series of eighth notes. Dynamic markings include 'sempre f' and 'pizz sempre f'.

Two sets of empty musical staves at the bottom of the page.

Handwritten musical score for the first system, consisting of four staves. The top staff begins with a treble clef, a key signature of one sharp (F#), and a 4/4 time signature. It contains several measures of music, including a triplet of eighth notes and a half note. The second staff continues the melody. The third staff features a complex rhythmic pattern with many sixteenth notes. The fourth staff provides a bass line. Dynamic markings include 'f' (forte) and 'arcs' (arco). A rehearsal mark 'h33' is present at the beginning of the first measure.



Handwritten musical score for the second system, consisting of four staves. This system is characterized by dynamic markings and expressive instructions. The first three staves each begin with the instruction "rinforzando, molto espressivo" (rinf., molto espressivo). The first staff also includes "dim." (diminuendo) markings. The second staff includes "dim." and "p" (piano) markings. The third staff includes "dim." and "p" markings. The fourth staff includes "dim." and "p" markings. A rehearsal mark "h33" is present at the end of the system. The music consists of sustained notes and chords with various articulations.



Handwritten musical score for the first system, consisting of four staves. The top staff is in treble clef with a key signature of two sharps (F# and C#). It contains a melodic line with slurs and a *dim.* (diminuendo) marking. The second staff is empty. The third staff is in alto clef and contains a complex rhythmic accompaniment with many sixteenth notes. The bottom staff is in bass clef and contains a bass line with a *mf espressivo* marking.



Handwritten musical score for the second system, consisting of four staves. The top staff is in treble clef with a key signature of two sharps. It features a melodic line with slurs, a *f* (forte) dynamic marking, and a *ritmico* (ritardando) marking. The second staff is in treble clef with a key signature of two sharps, containing a bass line with a *mf espressivo* marking. The third staff is in alto clef with a key signature of two sharps, containing a complex rhythmic accompaniment with a *6* (sexta) marking. The bottom staff is in bass clef with a key signature of two sharps, containing a bass line with a *dim.* (diminuendo) marking.

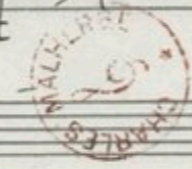
Handwritten musical score for the first system, consisting of four staves. The top staff is in treble clef with a key signature of one sharp (F#) and a 4/4 time signature. It contains a melodic line with eighth and sixteenth notes, marked with a *cresc.* dynamic. The second staff is also in treble clef with the same key signature and time signature, providing a harmonic accompaniment. The third staff is in alto clef with the same key signature and time signature, featuring a bass line with *mf* dynamics and *cresc.* markings. The fourth staff is in bass clef with the same key signature and time signature, containing a rhythmic accompaniment marked *ritmico* and *cresc.* A vertical bar line is present between the second and third measures of the system.

Handwritten musical score for the second system, consisting of four staves. The top staff is in treble clef with a key signature of one sharp (F#) and a 4/4 time signature, featuring a dense melodic line with many sixteenth notes, marked *piu cresc.*. The second staff is also in treble clef with the same key signature and time signature, with a similar dense melodic line marked *cresc.*. The third staff is in alto clef with the same key signature and time signature, showing a series of chords with accents (^) above them. The fourth staff is in bass clef with the same key signature and time signature, containing a melodic line marked *piu cresc.*. A vertical bar line is present between the second and third measures of the system.

(♩ = ♩) (152 = ♩)



Handwritten musical score for four staves. The first staff has a treble clef and a key signature of one sharp (F#). The second and third staves have treble clefs and a key signature of two sharps (F#, C#). The fourth staff has a bass clef and a key signature of two sharps (F#, C#). The music consists of rhythmic patterns with various dynamics including *dim.* and *p cresc.*



Handwritten musical score for four staves. The first staff has a treble clef and a key signature of one sharp (F#). The second and third staves have treble clefs and a key signature of two sharps (F#, C#). The fourth staff has a bass clef and a key signature of two sharps (F#, C#). The music features complex rhythmic patterns, including triplets and sixteenth notes, with dynamics such as *cresc.* and *f*.



The first system of the handwritten musical score consists of four staves. The top staff is in treble clef with a key signature of one sharp (F#) and a common time signature (C). It begins with a *dim.* (diminuendo) marking and contains a melodic line with slurs and accents. The second staff is also in treble clef with the same key signature, starting with a *dim.* marking and featuring a more complex melodic line with many slurs. The third staff is in alto clef with the same key signature, starting with a *dim.* marking and containing a series of chords and melodic fragments. The bottom staff is in bass clef with the same key signature, starting with a *dim.* marking and featuring a simple bass line with slurs. The system concludes with a double bar line.

The second system of the handwritten musical score also consists of four staves. The top staff is in treble clef with a key signature of one sharp (F#) and a common time signature (C). It begins with a *cresc.* (crescendo) marking and contains a melodic line with slurs and accents. The second staff is also in treble clef with the same key signature, starting with a *cresc.* marking and featuring a complex melodic line with many slurs. The third staff is in alto clef with the same key signature, starting with a *cresc.* marking and containing a series of chords and melodic fragments. The bottom staff is in bass clef with the same key signature, starting with a *cresc.* marking and featuring a simple bass line with slurs. The system concludes with a double bar line.



Handwritten musical score on four staves. The first staff features a complex melodic line with many sixteenth notes and slurs. The second staff has a more rhythmic melody with some rests. The third and fourth staves provide harmonic support with chords and moving lines. The key signature changes from one sharp (F#) to two flats (Bb, Eb) in the final measure of the system.



Handwritten musical score on four staves. The first staff begins with the instruction *sempre f* and contains a series of chords and melodic fragments. The second staff starts with *rinforzando* and features a melodic line with a sharp sign. The third and fourth staves continue the harmonic accompaniment. The piece concludes with *sempre f* written below the bottom staff.

The first system of the handwritten musical score consists of four staves. The top staff is in treble clef with a key signature of two flats (B-flat and E-flat) and a common time signature. It begins with a dynamic marking of *ff* and a fermata over the first measure. The second staff is also in treble clef with the same key signature and time signature. The third staff is in alto clef with the same key signature and time signature. The bottom staff is in bass clef with the same key signature and time signature. The music is characterized by dense, rhythmic patterns, often with slurs and accents. A fermata is present over the first measure of the bottom staff.

The second system of the handwritten musical score consists of four staves. The top staff is in treble clef with a key signature of two flats and a common time signature. It begins with a dynamic marking of *ff* and a fermata over the first measure. The second staff is also in treble clef with the same key signature and time signature. The third staff is in alto clef with the same key signature and time signature. The bottom staff is in bass clef with the same key signature and time signature. The music is characterized by dense, rhythmic patterns, often with slurs and accents. A fermata is present over the first measure of the bottom staff.



Handwritten musical score on a system of four staves. The notation includes treble and bass clefs, a key signature of two flats, and a 4/4 time signature. The music features complex rhythmic patterns with many sixteenth and thirty-second notes, often beamed together. There are several slurs and accents throughout the piece.



Handwritten musical score on a system of four staves, continuing the piece from the first system. The notation is dense with sixteenth and thirty-second notes, including many slurs and accents. The key signature remains two flats. The bottom staff shows some dynamic markings like 'f' and 'p'.

The first system of the handwritten musical score consists of four staves. The notation is dense, featuring a variety of note values, rests, and dynamic markings. The key signature is one sharp (F#). The first staff begins with a treble clef and a key signature of one sharp. The second staff also begins with a treble clef and a key signature of one sharp. The third staff begins with a bass clef and a key signature of one sharp. The fourth staff begins with a bass clef and a key signature of one sharp. The notation includes many slurs, ties, and dynamic markings such as *f* and *ff*. There are also some handwritten annotations, including a small 'f' and a 'p'.

The second system of the handwritten musical score consists of four staves. The notation is less dense than the first system, featuring a variety of note values, rests, and dynamic markings. The key signature is one sharp (F#). The first staff begins with a treble clef and a key signature of one sharp. The second staff also begins with a treble clef and a key signature of one sharp. The third staff begins with a bass clef and a key signature of one sharp. The fourth staff begins with a bass clef and a key signature of one sharp. The notation includes many slurs, ties, and dynamic markings such as *dim* and *p*. The word "dim" is written below the notes in the first three staves. There are also some handwritten annotations, including a small 'p' and a 'f'.



Handwritten musical score on four staves. The notation includes treble and bass clefs, a key signature of one sharp (F#), and various rhythmic values such as eighth and sixteenth notes. The music is written in a fluid, cursive style with many slurs and ties. A red circular stamp is located in the lower right quadrant of this system.

Handwritten musical score on four staves, continuing from the previous system. This section includes dynamic markings such as *f*, *p*, and *dolce*. The notation features complex rhythmic patterns and melodic lines with numerous slurs and ties. A red circular stamp is also present in the lower right quadrant of this system.

Handwritten musical score for the first system, consisting of four staves. The notation includes treble and bass clefs, various note values, rests, and dynamic markings such as 'p' and 'f'. There are also some yellowish scribbles under the first staff.

Handwritten musical score for the second system, consisting of four staves. The notation includes treble and bass clefs, various note values, rests, and dynamic markings such as 'cresc.' and 'cresc'. There are also some yellowish scribbles under the first staff.



Handwritten musical score for the first system, consisting of four staves. The notation includes various rhythmic values, accidentals, and dynamic markings. The key signature is one sharp (F#).

Handwritten musical score for the second system, consisting of four staves. The notation includes various rhythmic values, accidentals, and dynamic markings. The key signature is one sharp (F#). The tempo marking is *Tempo I^o (108 = ♩)*. The dynamic marking is *p espressivo*. A red circular library stamp is visible on the right side of the system.

Two empty musical staves at the bottom of the page.

Handwritten musical score for the first system, consisting of four staves. The top staff is in treble clef with a key signature of one sharp (F#). The second and third staves are also in treble clef with a key signature of two sharps (F# and C#). The bottom staff is in bass clef with a key signature of one sharp (F#). The music includes various note values, rests, and slurs. Dynamic markings include *mf* (mezzo-forte) and *f* (forte). There are also some handwritten annotations and corrections.

Handwritten musical score for the second system, consisting of four staves. The top staff is in treble clef with a key signature of one sharp (F#). The second and third staves are also in treble clef with a key signature of two sharps (F# and C#). The bottom staff is in bass clef with a key signature of one sharp (F#). The music includes various note values, rests, and slurs. Dynamic markings include *dim.* (diminuendo) and *p* (piano). There are also some handwritten annotations and corrections.



Handwritten musical score for the first system, consisting of four staves. The top staff is in treble clef with a key signature of one sharp (F#). The second and third staves are in treble clef with a key signature of two sharps (F# and C#). The bottom staff is in bass clef with a key signature of one sharp (F#). The music features various note values, rests, and dynamic markings such as *mp* and *p*. There are also some handwritten annotations above the first staff.



(♩ = ♩.) (une mesure comme deux du movt. précédent)
(108 = ♩)

Handwritten musical score for the second system, consisting of four staves. The top staff is in treble clef with a key signature of one sharp (F#). The second and third staves are in treble clef with a key signature of two sharps (F# and C#). The bottom staff is in bass clef with a key signature of one sharp (F#). The music continues with various note values and rests. There are some handwritten annotations, including *mp* and *p*, and some crossed-out sections in the final measure of the system.

Two empty musical staves at the bottom of the page.

(poco a poco accelerando al Tempo 2^o)

poco a poco al tempo primo

poco a poco al tempo primo

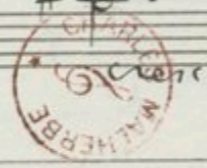
poco a poco al tempo primo

poco a poco al tempo primo

The first system of the handwritten musical score consists of four staves. The top staff is in treble clef with a key signature of one sharp (F#). It begins with a series of notes: F#4, G4, A4, B4, C5, followed by a fermata. The second staff is also in treble clef with the same key signature, containing notes G4, A4, B4, C5, D5, E5, F#5, G5, A5, B5, C6, D6, E6, F#6, G6, A6, B6, C7, D7, E7, F#7, G7, A7, B7, C8, D8, E8, F#8, G8, A8, B8, C9, D9, E9, F#9, G9, A9, B9, C10, D10, E10, F#10, G10, A10, B10, C11, D11, E11, F#11, G11, A11, B11, C12, D12, E12, F#12, G12, A12, B12, C13, D13, E13, F#13, G13, A13, B13, C14, D14, E14, F#14, G14, A14, B14, C15, D15, E15, F#15, G15, A15, B15, C16, D16, E16, F#16, G16, A16, B16, C17, D17, E17, F#17, G17, A17, B17, C18, D18, E18, F#18, G18, A18, B18, C19, D19, E19, F#19, G19, A19, B19, C20, D20, E20, F#20, G20, A20, B20, C21, D21, E21, F#21, G21, A21, B21, C22, D22, E22, F#22, G22, A22, B22, C23, D23, E23, F#23, G23, A23, B23, C24, D24, E24, F#24, G24, A24, B24, C25, D25, E25, F#25, G25, A25, B25, C26, D26, E26, F#26, G26, A26, B26, C27, D27, E27, F#27, G27, A27, B27, C28, D28, E28, F#28, G28, A28, B28, C29, D29, E29, F#29, G29, A29, B29, C30, D30, E30, F#30, G30, A30, B30, C31, D31, E31, F#31, G31, A31, B31, C32, D32, E32, F#32, G32, A32, B32, C33, D33, E33, F#33, G33, A33, B33, C34, D34, E34, F#34, G34, A34, B34, C35, D35, E35, F#35, G35, A35, B35, C36, D36, E36, F#36, G36, A36, B36, C37, D37, E37, F#37, G37, A37, B37, C38, D38, E38, F#38, G38, A38, B38, C39, D39, E39, F#39, G39, A39, B39, C40, D40, E40, F#40, G40, A40, B40, C41, D41, E41, F#41, G41, A41, B41, C42, D42, E42, F#42, G42, A42, B42, C43, D43, E43, F#43, G43, A43, B43, C44, D44, E44, F#44, G44, A44, B44, C45, D45, E45, F#45, G45, A45, B45, C46, D46, E46, F#46, G46, A46, B46, C47, D47, E47, F#47, G47, A47, B47, C48, D48, E48, F#48, G48, A48, B48, C49, D49, E49, F#49, G49, A49, B49, C50, D50, E50, F#50, G50, A50, B50, C51, D51, E51, F#51, G51, A51, B51, C52, D52, E52, F#52, G52, A52, B52, C53, D53, E53, F#53, G53, A53, B53, C54, D54, E54, F#54, G54, A54, B54, C55, D55, E55, F#55, G55, A55, B55, C56, D56, E56, F#56, G56, A56, B56, C57, D57, E57, F#57, G57, A57, B57, C58, D58, E58, F#58, G58, A58, B58, C59, D59, E59, F#59, G59, A59, B59, C60, D60, E60, F#60, G60, A60, B60, C61, D61, E61, F#61, G61, A61, B61, C62, D62, E62, F#62, G62, A62, B62, C63, D63, E63, F#63, G63, A63, B63, C64, D64, E64, F#64, G64, A64, B64, C65, D65, E65, F#65, G65, A65, B65, C66, D66, E66, F#66, G66, A66, B66, C67, D67, E67, F#67, G67, A67, B67, C68, D68, E68, F#68, G68, A68, B68, C69, D69, E69, F#69, G69, A69, B69, C70, D70, E70, F#70, G70, A70, B70, C71, D71, E71, F#71, G71, A71, B71, C72, D72, E72, F#72, G72, A72, B72, C73, D73, E73, F#73, G73, A73, B73, C74, D74, E74, F#74, G74, A74, B74, C75, D75, E75, F#75, G75, A75, B75, C76, D76, E76, F#76, G76, A76, B76, C77, D77, E77, F#77, G77, A77, B77, C78, D78, E78, F#78, G78, A78, B78, C79, D79, E79, F#79, G79, A79, B79, C80, D80, E80, F#80, G80, A80, B80, C81, D81, E81, F#81, G81, A81, B81, C82, D82, E82, F#82, G82, A82, B82, C83, D83, E83, F#83, G83, A83, B83, C84, D84, E84, F#84, G84, A84, B84, C85, D85, E85, F#85, G85, A85, B85, C86, D86, E86, F#86, G86, A86, B86, C87, D87, E87, F#87, G87, A87, B87, C88, D88, E88, F#88, G88, A88, B88, C89, D89, E89, F#89, G89, A89, B89, C90, D90, E90, F#90, G90, A90, B90, C91, D91, E91, F#91, G91, A91, B91, C92, D92, E92, F#92, G92, A92, B92, C93, D93, E93, F#93, G93, A93, B93, C94, D94, E94, F#94, G94, A94, B94, C95, D95, E95, F#95, G95, A95, B95, C96, D96, E96, F#96, G96, A96, B96, C97, D97, E97, F#97, G97, A97, B97, C98, D98, E98, F#98, G98, A98, B98, C99, D99, E99, F#99, G99, A99, B99, C100, D100, E100, F#100, G100, A100, B100, C101, D101, E101, F#101, G101, A101, B101, C102, D102, E102, F#102, G102, A102, B102, C103, D103, E103, F#103, G103, A103, B103, C104, D104, E104, F#104, G104, A104, B104, C105, D105, E105, F#105, G105, A105, B105, C106, D106, E106, F#106, G106, A106, B106, C107, D107, E107, F#107, G107, A107, B107, C108, D108, E108, F#108, G108, A108, B108, C109, D109, E109, F#109, G109, A109, B109, C110, D110, E110, F#110, G110, A110, B110, C111, D111, E111, F#111, G111, A111, B111, C112, D112, E112, F#112, G112, A112, B112, C113, D113, E113, F#113, G113, A113, B113, C114, D114, E114, F#114, G114, A114, B114, C115, D115, E115, F#115, G115, A115, B115, C116, D116, E116, F#116, G116, A116, B116, C117, D117, E117, F#117, G117, A117, B117, C118, D118, E118, F#118, G118, A118, B118, C119, D119, E119, F#119, G119, A119, B119, C120, D120, E120, F#120, G120, A120, B120, C121, D121, E121, F#121, G121, A121, B121, C122, D122, E122, F#122, G122, A122, B122, C123, D123, E123, F#123, G123, A123, B123, C124, D124, E124, F#124, G124, A124, B124, C125, D125, E125, F#125, G125, A125, B125, C126, D126, E126, F#126, G126, A126, B126, C127, D127, E127, F#127, G127, A127, B127, C128, D128, E128, F#128, G128, A128, B128, C129, D129, E129, F#129, G129, A129, B129, C130, D130, E130, F#130, G130, A130, B130, C131, D131, E131, F#131, G131, A131, B131, C132, D132, E132, F#132, G132, A132, B132, C133, D133, E133, F#133, G133, A133, B133, C134, D134, E134, F#134, G134, A134, B134, C135, D135, E135, F#135, G135, A135, B135, C136, D136, E136, F#136, G136, A136, B136, C137, D137, E137, F#137, G137, A137, B137, C138, D138, E138, F#138, G138, A138, B138, C139, D139, E139, F#139, G139, A139, B139, C140, D140, E140, F#140, G140, A140, B140, C141, D141, E141, F#141, G141, A141, B141, C142, D142, E142, F#142, G142, A142, B142, C143, D143, E143, F#143, G143, A143, B143, C144, D144, E144, F#144, G144, A144, B144, C145, D145, E145, F#145, G145, A145, B145, C146, D146, E146, F#146, G146, A146, B146, C147, D147, E147, F#147, G147, A147, B147, C148, D148, E148, F#148, G148, A148, B148, C149, D149, E149, F#149, G149, A149, B149, C150, D150, E150, F#150, G150, A150, B150, C151, D151, E151, F#151, G151, A151, B151, C152, D152, E152, F#152, G152, A152, B152, C153, D153, E153, F#153, G153, A153, B153, C154, D154, E154, F#154, G154, A154, B154, C155, D155, E155, F#155, G155, A155, B155, C156, D156, E156, F#156, G156, A156, B156, C157, D157, E157, F#157, G157, A157, B157, C158, D158, E158, F#158, G158, A158, B158, C159, D159, E159, F#159, G159, A159, B159, C160, D160, E160, F#160, G160, A160, B160, C161, D161, E161, F#161, G161, A161, B161, C162, D162, E162, F#162, G162, A162, B162, C163, D163, E163, F#163, G163, A163, B163, C164, D164, E164, F#164, G164, A164, B164, C165, D165, E165, F#165, G165, A165, B165, C166, D166, E166, F#166, G166, A166, B166, C167, D167, E167, F#167, G167, A167, B167, C168, D168, E168, F#168, G168, A168, B168, C169, D169, E169, F#169, G169, A169, B169, C170, D170, E170, F#170, G170, A170, B170, C171, D171, E171, F#171, G171, A171, B171, C172, D172, E172, F#172, G172, A172, B172, C173, D173, E173, F#173, G173, A173, B173, C174, D174, E174, F#174, G174, A174, B174, C175, D175, E175, F#175, G175, A175, B175, C176, D176, E176, F#176, G176, A176, B176, C177, D177, E177, F#177, G177, A177, B177, C178, D178, E178, F#178, G178, A178, B178, C179, D179, E179, F#179, G179, A179, B179, C180, D180, E180, F#180, G180, A180, B180, C181, D181, E181, F#181, G181, A181, B181, C182, D182, E182, F#182, G182, A182, B182, C183, D183, E183, F#183, G183, A183, B183, C184, D184, E184, F#184, G184, A184, B184, C185, D185, E185, F#185, G185, A185, B185, C186, D186, E186, F#186, G186, A186, B186, C187, D187, E187, F#187, G187, A187, B187, C188, D188, E188, F#188, G188, A188, B188, C189, D189, E189, F#189, G189, A189, B189, C190, D190, E190, F#190, G190, A190, B190, C191, D191, E191, F#191, G191, A191, B191, C192, D192, E192, F#192, G192, A192, B192, C193, D193, E193, F#193, G193, A193, B193, C194, D194, E194, F#194, G194, A194, B194, C195, D195, E195, F#195, G195, A195, B195, C196, D196, E196, F#196, G196, A196, B196, C197, D197, E197, F#197, G197, A197, B197, C198, D198, E198, F#198, G198, A198, B198, C199, D199, E199, F#199, G199, A199, B199, C200, D200, E200, F#200, G200, A200, B200, C201, D201, E201, F#201, G201, A201, B201, C202, D202, E202, F#202, G202, A202, B202, C203, D203, E203, F#203, G203, A203, B203, C204, D204, E204, F#204, G204, A204, B204, C205, D205, E205, F#205, G205, A205, B205, C206, D206, E206, F#206, G206, A206, B206, C207, D207, E207, F#207, G207, A207, B207, C208, D208, E208, F#208, G208, A208, B208, C209, D209, E209, F#209, G209, A209, B209, C210, D210, E210, F#210, G210, A210, B210, C211, D211, E211, F#211, G211, A211, B211, C212, D212, E212, F#212, G212, A212, B212, C213, D213, E213, F#213, G213, A213, B213, C214, D214, E214, F#214, G214, A214, B214, C215, D215, E215, F#215, G215, A215, B215, C216, D216, E216, F#216, G216, A216, B216, C217, D217, E217, F#217, G217, A217, B217, C218, D218, E218, F#218, G218, A218, B218, C219, D219, E219, F#219, G219, A219, B219, C220, D220, E220, F#220, G220, A220, B220, C221, D221, E221, F#221, G221, A221, B221, C222, D222, E222, F#222, G222, A222, B222, C223, D223, E223, F#223, G223, A223, B223, C224, D224, E224, F#224, G224, A224, B224, C225, D225, E225, F#225, G225, A225, B225, C226, D226, E226, F#226, G226, A226, B226, C227, D227, E227, F#227, G227, A227, B227, C228, D228, E228, F#228, G228, A228, B228, C229, D229, E229, F#229, G229, A229, B229, C230, D230, E230, F#230, G230, A230, B230, C231, D231, E231, F#231, G231, A231, B231, C232, D232, E232, F#232, G232, A232, B232, C233, D233, E233, F#233, G233, A233, B233, C234, D234, E234, F#234, G234, A234, B234, C235, D235, E235, F#235, G235, A235, B235, C236, D236, E236, F#236, G236, A236, B236, C237, D237, E237, F#237, G237, A237, B237, C238, D238, E238, F#238, G238, A238, B238, C239, D239, E239, F#239, G239, A239, B239, C240, D240, E240, F#240, G240, A240, B240, C241, D241, E241, F#241, G241, A241, B241, C242, D242, E242, F#242, G242, A242, B242, C243, D243, E243, F#243, G243, A243, B243, C244, D244, E244, F#244, G244, A244, B244, C245, D245, E245, F#245, G245, A245, B245, C246, D246, E246, F#246, G246, A246, B246, C247, D247, E247, F#247, G247, A247, B247, C248, D248, E248, F#248, G248, A248, B248, C249, D249, E249, F#249, G249, A249, B249, C250, D250, E250, F#250, G250, A250, B250, C251, D251, E251, F#251, G251, A251, B251, C252, D252, E252, F#252, G252, A252, B252, C253, D253, E253, F#253, G253, A253, B253, C254, D254, E254, F#254, G254, A254, B254, C255, D255, E255, F#255, G255, A255, B255, C256, D256, E256, F#256, G256, A256, B256, C257, D257, E257, F#257, G257, A257, B257, C258, D258, E258, F#258, G258, A258, B258, C259, D259, E259, F#259, G259, A259, B259, C260, D260, E260, F#260, G260, A260, B260, C261, D261, E261, F#261, G261, A261, B261, C262, D262, E262, F#262, G262, A262, B262, C263, D263, E263, F#263, G263, A263, B263, C264, D264, E264, F#264, G264, A264, B264, C265, D265, E265, F#265, G265, A265, B265, C266, D266, E266, F#266, G266, A266, B266, C267, D267, E267, F#267, G267, A267, B267, C268, D268, E268, F#268, G268, A268, B268, C269, D269, E269, F#269, G269, A269, B269, C270, D270, E270, F#270, G270, A270, B270, C271, D271, E271, F#271, G271, A271, B271, C272, D272, E272, F#272, G272, A272, B272, C273, D273, E273, F#273, G273, A273, B273, C274, D274, E274, F#274, G274, A274, B274, C275, D275, E275, F#275, G275, A275, B275, C276, D276, E276, F#276, G276, A276, B276, C277, D277, E277, F#277, G277, A277, B277, C278, D278, E278, F#278, G278, A278, B278, C279, D279, E279, F#279, G279, A279, B279, C280, D280, E280, F#280, G280, A280, B280, C281, D281, E281, F#281, G281, A281, B281, C282, D282, E282, F#282, G282, A282, B282, C283, D283, E283, F#283, G283, A283, B283, C284, D284, E284, F#284, G284, A284, B284, C285, D285, E285, F#285, G285, A285, B285, C286, D286, E286, F#286, G286, A286, B286, C287, D287, E287, F#287, G287, A287, B287, C288, D288, E288, F#288, G288, A288, B288, C289, D289, E289, F#289, G289, A289, B289, C290, D290, E290, F#290, G290, A290, B290, C291, D291, E291, F#291, G291, A291, B291, C292, D292, E292, F#292, G292, A292, B292, C293, D293, E293, F#293, G293, A293, B293, C294, D294, E294, F#294, G294, A294, B294, C295, D295, E295, F#295, G295, A295, B295, C296, D296, E296, F#296, G296, A296, B296, C297, D297, E297, F#297, G297, A297, B297, C298, D298, E298, F#298, G298, A298, B298, C299, D299, E299, F#299, G299, A299, B299, C300, D300, E300, F#300, G300, A300, B300, C301, D301, E301, F#301, G301, A301, B301, C302, D302, E302, F#302, G302, A302, B302, C303, D303, E303, F#303, G303, A303, B303, C304, D304, E304, F#304, G304, A304, B304, C305, D305, E305, F#305, G305, A305, B305, C306, D306, E306, F#306, G306, A306, B306, C307, D307, E307, F#307, G307, A307, B307, C308, D308, E308, F#308, G308, A308, B308, C309, D309, E309, F#309, G309, A309, B309, C310, D310, E310, F#310, G310, A310, B310, C311, D311, E311, F#311, G311, A311, B311, C312, D312, E312, F#312, G312, A312, B312, C313, D313, E313, F#313, G313, A313, B313, C314, D314, E314, F#314, G314, A314, B314, C315, D315, E315, F#315, G315, A315, B315, C316, D316, E316, F#316, G316, A316, B316, C317, D317, E317, F#317, G317, A317, B317, C318, D318, E318, F#318, G318, A318, B318, C319, D319, E319, F#319, G319, A319, B319, C320, D320, E320, F#320, G320, A320, B320, C321, D321, E321, F#321, G321, A321, B321, C322, D322, E322, F#322, G322, A322, B322, C323, D323, E323, F#323, G323, A323, B323, C324, D324, E324, F#324, G324, A324, B324, C325, D325, E325, F#325, G325, A325, B325, C326, D326, E326, F#326, G326, A326, B326, C327, D327, E327, F#327, G327, A327, B327, C328, D328, E328, F#328, G328, A328, B328, C329, D329, E329, F#329, G329, A329, B329, C330, D330, E330, F#330, G330, A330, B330, C331, D331, E331, F#331, G331, A331, B331, C332, D332, E332, F#332, G332, A332, B332, C333, D333, E333, F#333, G333, A333, B333, C334, D334, E334, F#334, G334, A334, B334, C335, D335, E335, F#335, G335, A335, B335, C336, D336, E336, F#336, G336, A336, B336, C337, D337, E337, F#337, G337, A337, B337, C338, D338, E338, F#338, G338, A338, B338, C339, D339, E339, F#339, G339, A339, B339, C340, D340, E340, F#340, G340, A340, B340, C341, D341, E341, F#341, G341, A341, B341, C342, D342, E342, F#342, G342, A342, B342, C343, D343, E343, F#343, G343, A343, B343, C344, D344, E344, F#344, G344, A344, B344, C345, D345, E345, F#345, G345, A345, B345, C346, D346, E346, F#346, G346, A346, B346, C347, D347, E347, F#347, G347, A347, B347, C348, D348, E348, F#348, G348, A348, B348, C349, D349, E349, F#349, G349, A349, B349, C350, D350, E350, F#350, G350, A350, B350, C351, D351, E351, F#351, G351, A351, B351, C352, D352, E352, F#352, G352, A352, B352, C353, D353, E353, F#353, G353, A353, B353, C354, D354, E354, F#354, G354, A354, B354, C355, D355, E355, F#355, G355, A355, B355, C356, D356, E356, F#356, G356, A356, B356, C357, D357, E357, F#

(152 = J.)

Handwritten musical score for the first system, consisting of four staves. The notation includes various rhythmic values, accidentals, and dynamic markings such as *mf*, *cresc.*, and *arco*. A red circular stamp is visible in the upper right corner of the system.



Handwritten musical score for the second system, consisting of four staves. The notation includes notes, rests, and dynamic markings. The instruction *molto espressivo* is written on each staff. A large section of the score on the right side is heavily crossed out with black ink.

Handwritten musical score for the first system, consisting of four staves. The top two staves are in treble clef with a key signature of one sharp (F#). The bottom two staves are in bass clef with a key signature of two sharps (F# and C#). The music includes various note values, rests, and accidentals. The word "dim" (diminuendo) is written under the first, second, and fourth staves. The first staff begins with a dynamic marking of *p* (piano).

Handwritten musical score for the second system, consisting of four staves. The top two staves are in treble clef with a key signature of one sharp (F#). The bottom two staves are in bass clef with a key signature of two sharps (F# and C#). The music includes various note values, rests, and accidentals. The word "mf" (mezzo-forte) is written at the end of the first staff. The word "cresc." (crescendo) is written under the first, second, and fourth staves. The first staff begins with a dynamic marking of *p* (piano).

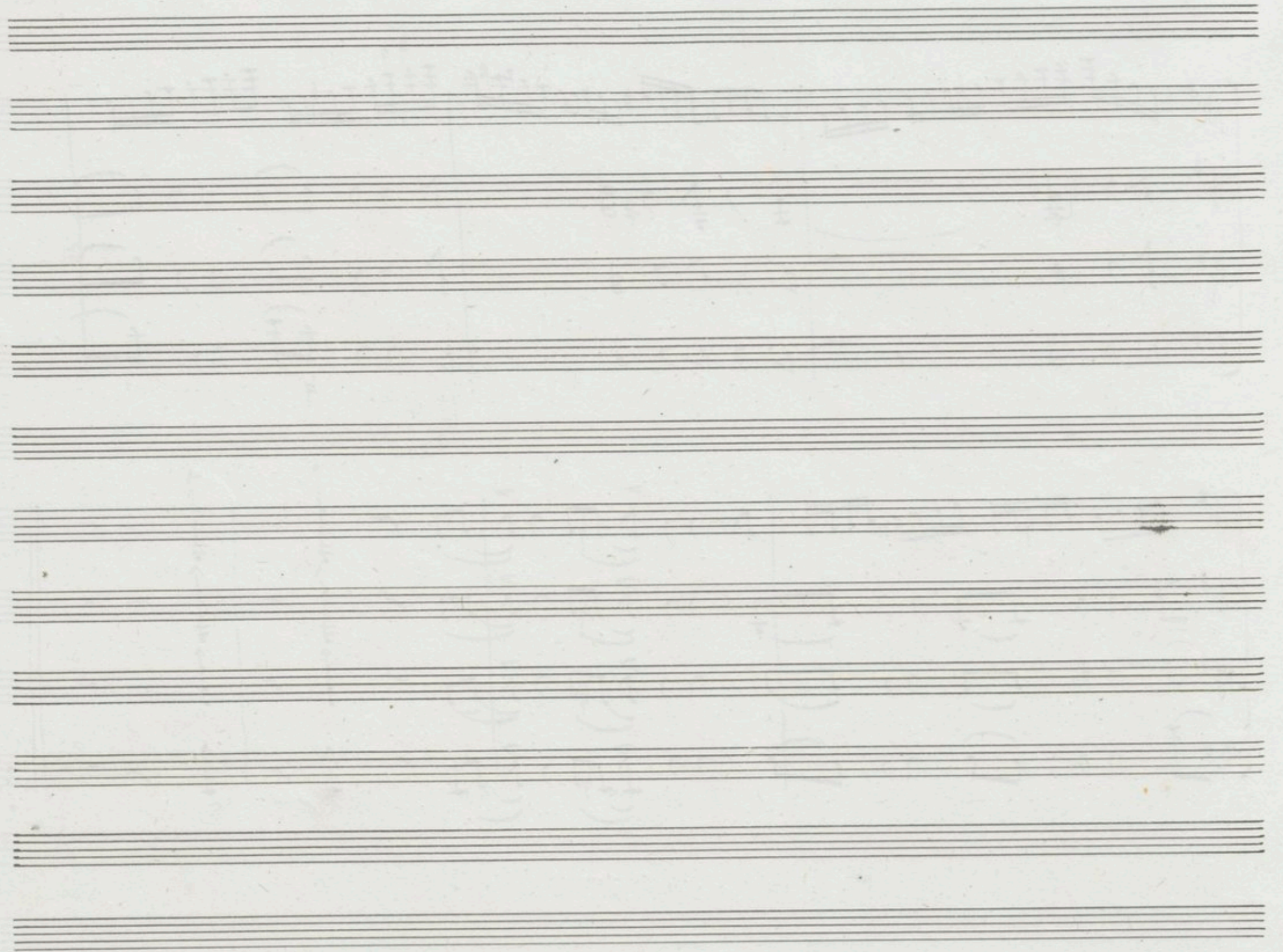
Handwritten musical score for the first system, consisting of four staves. The top staff contains a melodic line with a long note, followed by a measure with a *cresc.* marking and a complex chord structure. The second, third, and fourth staves contain rhythmic accompaniment with *cresc.* markings. The system concludes with a *p* (piano) dynamic marking and a final chord.

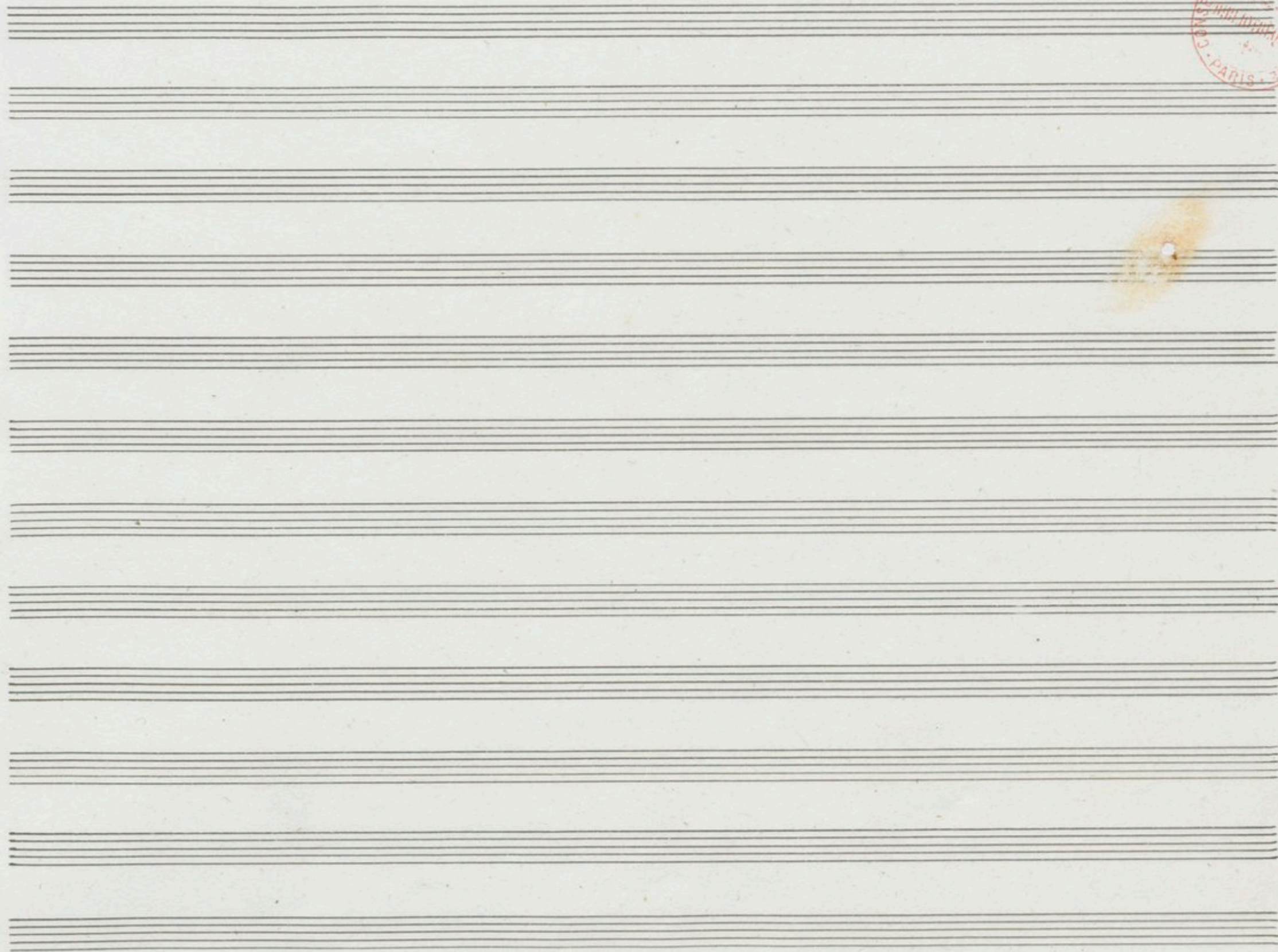
Handwritten musical score for the second system, consisting of four staves. The top staff begins with a *p* (piano) dynamic marking and a melodic line. The second, third, and fourth staves contain rhythmic accompaniment with *f* (forte) and *cresc.* markings. The system concludes with a *p* (piano) dynamic marking and a final chord.

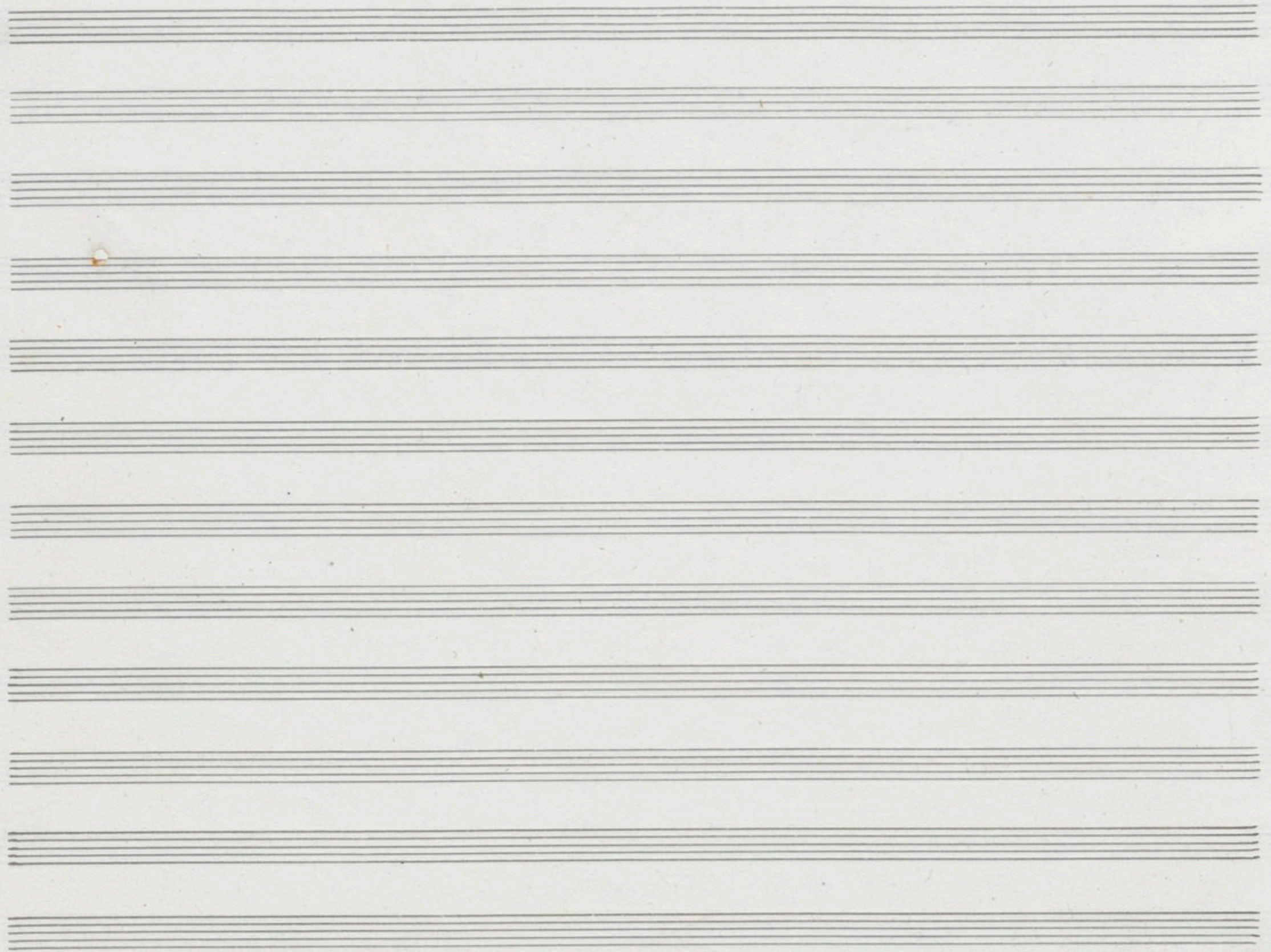
The first system of the handwritten musical score consists of four staves. The top staff contains a complex melodic line with many slurs and ties, and dynamic markings such as *f* and *ff*. The second and third staves appear to be accompaniment parts, with the second staff featuring a prominent slur over a series of notes. The bottom staff continues the accompaniment with various rhythmic values and slurs. The system concludes with a double bar line.



The second system of the handwritten musical score also consists of four staves. The notation is similar to the first system, with a complex melodic line in the top staff and accompaniment in the lower staves. This system includes several instances of slurs and ties, particularly in the second and third staves. The system ends with a double bar line.









Molto All^o quasi Presto (184 = ♩)

Handwritten musical score for the first system, consisting of four staves. The top staff is in treble clef with a key signature of one sharp (F#) and a 2/4 time signature. It begins with a dynamic marking of *p*. The second and third staves are in treble clef with a key signature of one sharp (F#) and a 2/4 time signature, both starting with a dynamic marking of *pizz.* The bottom staff is in bass clef with a key signature of one sharp (F#) and a 2/4 time signature, also starting with a dynamic marking of *pizz.*

Handwritten musical score for the second system, consisting of four staves. The top staff is in treble clef with a key signature of one sharp (F#) and a 2/4 time signature, featuring a triplet of eighth notes marked with a '3' above the notes. A red circular stamp is partially visible over this staff, containing the text 'ALHERBE' and 'MARTE'. The second and third staves are in treble clef with a key signature of one sharp (F#) and a 2/4 time signature. The bottom staff is in bass clef with a key signature of one sharp (F#) and a 2/4 time signature.

Handwritten musical score for the first system, consisting of four staves. The top two staves are in treble clef, and the bottom two are in bass clef. The key signature is one sharp (F#). The music includes various rhythmic patterns such as eighth and sixteenth notes, and rests. The notation is clear and legible.

Handwritten musical score for the second system, consisting of four staves. The top two staves are in treble clef, and the bottom two are in bass clef. The key signature is one sharp (F#). This system includes dynamic markings: *cresc.* (crescendo), *arco* (arco), and *f* (forte). The notation includes various rhythmic patterns and rests, with some notes marked with accents.

Two empty musical staves at the bottom of the page, consisting of four lines each, with no notation present.



Handwritten musical score for the first system, consisting of four staves. The notation includes treble and bass clefs, a key signature of one sharp (F#), and various rhythmic values. The first staff begins with a treble clef and a key signature of one sharp. The second staff also has a treble clef. The third and fourth staves have a bass clef. The music features complex rhythmic patterns, including eighth and sixteenth notes, and rests. A circled '8' is present above the first staff.

Handwritten musical score for the second system, consisting of four staves. The notation includes treble and bass clefs, a key signature of one sharp (F#), and various rhythmic values. The first staff begins with a treble clef and a key signature of one sharp. The second staff also has a treble clef. The third and fourth staves have a bass clef. The music features complex rhythmic patterns, including eighth and sixteenth notes, and rests. A circled '8' is present above the first staff. The word "dim" (diminuendo) is written below the second, third, and fourth staves. A red circular stamp is visible above the second staff.

Two empty musical staves at the bottom of the page.

The first system of the handwritten musical score consists of four staves. The top staff is in treble clef, the second and third are in alto clef, and the bottom is in bass clef. The key signature is one sharp (F#). The music includes various note values, rests, and dynamic markings such as *arco*. A triplet of eighth notes is marked with a '3' above it. The system concludes with a double bar line.

Two empty musical staves, each consisting of five lines, are positioned between the first and second systems of music.

The second system of the handwritten musical score consists of four staves. The top staff is in treble clef, the second and third are in alto clef, and the bottom is in bass clef. The key signature is one sharp (F#). The music includes various note values, rests, and dynamic markings such as *arco*. There are some corrections or deletions in the second staff, indicated by heavy black scribbles. The system concludes with a double bar line.

Two empty musical staves, each consisting of five lines, are positioned at the bottom of the page.



Handwritten musical score for the first system, consisting of four staves. Each staff begins with the word "cresc." (crescendo). The music is written in treble and bass clefs with a key signature of one sharp (F#). The notation includes various rhythmic values and accidentals.



Handwritten musical score for the second system, consisting of four staves. The notation includes dynamic markings such as *f* (forte) and *fz* (forzando), and articulation marks like accents and slurs. There are also numerical markings (3, 6, 8) above or below notes, possibly indicating fingerings or breath marks. The key signature remains one sharp.

Handwritten musical score for the first system, consisting of four staves. The notation includes various rhythmic values, accidentals, and dynamic markings. The word "Vampref" is written above the second measure of the first staff. The first staff begins with a treble clef and a key signature of one sharp (F#). The second and third staves also use treble clefs, while the fourth staff uses a bass clef. The music is written in a fluid, cursive style characteristic of 18th or 19th-century manuscripts.

Handwritten musical score for the second system, also consisting of four staves. The notation continues from the first system. The word "vif" is written vertically on the right side of the second, third, and fourth staves. The musical notation includes various rhythmic values, accidentals, and dynamic markings. The first staff begins with a treble clef and a key signature of one sharp (F#). The second and third staves also use treble clefs, while the fourth staff uses a bass clef. The music is written in a fluid, cursive style characteristic of 18th or 19th-century manuscripts.



p espressivo

sempre f

mf



low crescendo

Handwritten musical score for the first system, consisting of four staves. The top two staves are in treble clef with a key signature of one sharp (F#). The bottom two staves are in bass clef with a key signature of one sharp (F#). The notation includes various rhythmic values, slurs, and dynamic markings such as *cresc.* and *f*. A triplet of eighth notes is marked with a '3' above it in the first staff. The second staff features a triplet of eighth notes and a series of sixteenth notes. The third staff has a *cresc.* marking and a series of sixteenth notes. The fourth staff has a *cresc.* marking and a series of eighth notes. The system concludes with a triplet of eighth notes in the first staff.

Handwritten musical score for the second system, consisting of four staves. The top two staves are in treble clef with a key signature of one sharp (F#). The bottom two staves are in bass clef with a key signature of one sharp (F#). The notation includes various rhythmic values, slurs, and dynamic markings such as *8* and *f*. The first staff features a series of sixteenth notes and a triplet of eighth notes. The second staff has a series of eighth notes and a triplet of eighth notes. The third staff has a series of eighth notes and a triplet of eighth notes. The fourth staff has a series of eighth notes and a triplet of eighth notes. The system concludes with a triplet of eighth notes in the first staff.



Handwritten musical score for the first system, consisting of four staves. The notation includes treble and bass clefs, a key signature of one sharp (F#), and various rhythmic values. A dynamic marking of *sempre f* is present in the lower right of the system. A red circular stamp is partially visible on the right side of the system.



Handwritten musical score for the second system, consisting of three staves. The notation includes treble and bass clefs, a key signature of two sharps (F# and C#), and various rhythmic values. Dynamic markings of *sempre f* are present in the first and second staves. A red circular stamp is partially visible on the right side of the system.

Sempre!

The first system of the handwritten musical score consists of four staves. The top staff is in treble clef and begins with the instruction *Sempre!*. It contains a series of notes, including a triplet of eighth notes. The second staff is also in treble clef and features a melodic line with some accidentals. The third staff is in alto clef and contains a bass line with a triplet. The bottom staff is in bass clef and features a bass line with a triplet. The key signature is three sharps (F#, C#, G#).

The second system of the handwritten musical score also consists of four staves. The top staff is in treble clef and begins with a triplet of eighth notes. The second staff is in treble clef and contains a melodic line. The third staff is in alto clef and contains a bass line with a triplet. The bottom staff is in bass clef and contains a bass line with a triplet. The key signature is three sharps (F#, C#, G#).



Handwritten musical score on four staves. The music is in treble and bass clefs with a key signature of three sharps (F#, C#, G#). The notation includes various note values, rests, and slurs. A red circular stamp is located in the lower right quadrant of this system.



Handwritten musical score on four staves, continuing from the first system. The notation includes various note values, rests, and slurs. The key signature changes to two sharps (F#, C#) in the second measure of the first staff.

The first system of handwritten musical notation consists of four staves. The top staff is in treble clef, the second is in alto clef, and the third and fourth are in bass clef. The key signature is three sharps (F#, C#, G#). The notation includes various rhythmic values such as eighth and sixteenth notes, rests, and dynamic markings like 'f' and 'p'. A sharp sign is present at the end of the fourth staff.

The second system of handwritten musical notation also consists of four staves, with the same clef arrangement as the first system. The key signature remains three sharps. This system features more complex rhythmic patterns, including beamed sixteenth notes and rests. Dynamic markings like 'f' and 'p' are used throughout. The notation concludes with a final rest in the fourth staff.

Two empty musical staves are located at the bottom of the page, consisting of five-line systems without any notation.



Handwritten musical score on four staves. The notation includes treble and bass clefs, various note values, and rests. The word *rit* is written in cursive above the first staff in three locations. A red circular stamp is partially visible on the right side of the first staff.

Handwritten musical score on four staves. The notation includes treble and bass clefs, various note values, and rests. The word *rit* is written in cursive above the first staff in two locations. A red circular stamp is partially visible on the right side of the first staff.

Handwritten musical score for the first system, consisting of four staves. The top staff is in treble clef with a key signature of one sharp (F#) and contains a melodic line with a slur over the first two measures and a dynamic marking of *dim*. The second staff is also in treble clef and contains a melodic line with a dynamic marking of *mf* and a slur over the last two measures. The third and fourth staves are in bass clef and contain accompaniment. The system concludes with a double bar line and a fermata over the final notes.

Handwritten musical score for the second system, consisting of four staves. The top staff is in treble clef with a key signature of one sharp (F#) and contains a melodic line with a dynamic marking of *p* and several accents (^) and slurs. There are some crossed-out passages in this staff. The second staff is in treble clef with a key signature of one sharp (F#) and contains a melodic line with a dynamic marking of *p* and a slur. The third staff is in bass clef with a key signature of one sharp (F#) and contains accompaniment with a dynamic marking of *f*. The fourth staff is in bass clef with a key signature of one sharp (F#) and contains accompaniment with a dynamic marking of *p*. The system concludes with a double bar line and a fermata over the final notes.



Handwritten musical score for the first system, consisting of four staves. The music is in G major and 4/4 time. The first staff contains a melodic line with a *pizz* marking. The second staff features a more complex melodic line with a *dim.* marking. The third and fourth staves provide harmonic accompaniment, with *arco* markings and dynamic markings such as *mp*, *pp*, and *mf*. A red circular stamp is visible on the right side of the system.

Two empty musical staves.

Handwritten musical score for the second system, consisting of four staves. The music continues in G major and 4/4 time. The first staff begins with a *pp* marking and a triplet of eighth notes. The second staff has a *6* marking. The third and fourth staves continue the accompaniment with various dynamic markings and articulation.

Two empty musical staves.

Handwritten musical score for the first system, consisting of four staves. The music is written in treble and bass clefs with a key signature of one sharp (F#). The first staff begins with a treble clef and a key signature of one sharp. The second staff begins with a treble clef and a key signature of one sharp. The third staff begins with an alto clef and a key signature of one sharp. The fourth staff begins with a bass clef and a key signature of one sharp. The music consists of various note values, including quarter and eighth notes, and rests. Dynamic markings include *p* and *pp* in brown ink, appearing above the first, second, and fourth staves.

Two empty musical staves, each consisting of five horizontal lines.

Handwritten musical score for the second system, consisting of four staves. The music is written in treble and bass clefs with a key signature of one sharp (F#). The first staff begins with a treble clef and a key signature of one sharp. The second staff begins with a treble clef and a key signature of one sharp. The third staff begins with an alto clef and a key signature of one sharp. The fourth staff begins with a bass clef and a key signature of one sharp. The music consists of various note values, including quarter and eighth notes, and rests. A large section of the music, spanning across all four staves, is heavily scribbled out with black ink. The marking *sempre pp* is written in brown ink below the first, second, third, and fourth staves.

Two empty musical staves, each consisting of five horizontal lines.

Handwritten musical score for the first system, consisting of four staves. The notation includes treble and bass clefs, a key signature of one sharp (F#), and a common time signature (C). The music features a melodic line in the upper staves and a harmonic accompaniment in the lower staves. The instruction "poco a poco cresc." is written in cursive in each of the four staves. The first staff ends with a fermata over a whole note.

Handwritten musical score for the second system, consisting of four staves. The notation continues from the first system. It includes dynamic markings such as "f" (forte) and "arco" (arco). The music features a melodic line in the upper staves and a harmonic accompaniment in the lower staves. The system concludes with a fermata over a whole note in the first staff.

A handwritten musical score on four staves. The notation includes treble and bass clefs, a key signature of one sharp (F#), and various rhythmic values. The right side of the score is heavily crossed out with multiple diagonal lines. There are several red circular stamps: one at the top right with illegible text, and another in the lower right quadrant with the text 'MUSEUM' and '1875'. A circled 'C' is located at the top right of the first staff. A circled 'C' is also present on the first staff of the lower section.

A single staff containing a long horizontal line drawn across it. On the left side of the staff, there is a circled 'C'. On the right side, there is a red 'X' mark.

Five empty musical staves, each consisting of five horizontal lines, arranged vertically.

un peu
moins vite - meno presto (160 = ♩)

Handwritten musical score for the first system, consisting of four staves. The music is in a key with two sharps (F# and C#) and a common time signature. The first staff contains a few notes and rests. The second staff begins with a *mf* dynamic and includes a *dim.* marking. The third staff starts with a *mf* dynamic and features a *dim.* marking. The fourth staff begins with a *mf* dynamic and contains a large section of dense, overlapping notes that are heavily scribbled over with diagonal lines, followed by a *mf dim.* marking. The system concludes with a *p* dynamic marking.

Handwritten musical score for the second system, consisting of four staves. The music continues with complex rhythmic patterns and dynamic markings. The first staff features a *f* dynamic. The second staff includes a *dim.* marking. The third staff includes a *dim.* marking. The fourth staff includes a *dim.* marking. The system concludes with a *dim.* marking.

Handwritten musical score for the first system, consisting of four staves. The notation includes complex chords and melodic lines. The word "espressivo" is written above the second staff. The music is written in a key with two sharps (F# and C#) and a common time signature. The first staff has a treble clef, while the others have different clefs. The notation is dense and expressive.



Handwritten musical score for the second system, consisting of four staves. The notation includes notes, rests, and dynamic markings. The music continues from the first system, maintaining the same key and time signature. The notation is clear and well-organized.

Tempo I:

dim.

p

pp

pp

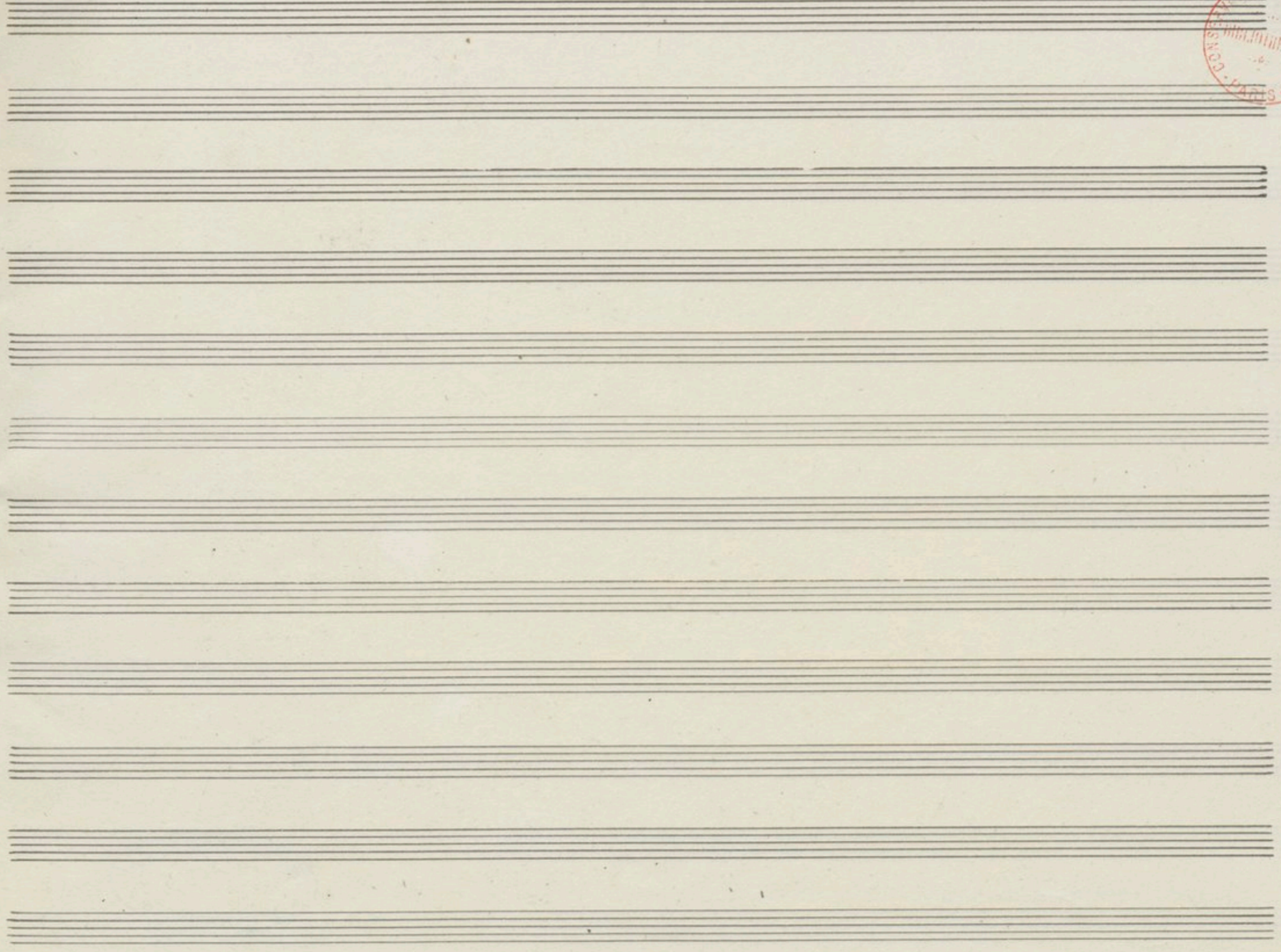
pp

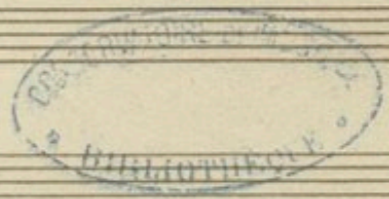
pp

pp

pp

pp





molto Adagio (92 = ♩)

molto espressivo



Handwritten musical score for the first system, consisting of four staves. The key signature is two sharps (F# and C#) and the time signature is 3/4. The notation includes various note values, rests, and dynamic markings such as *mp* and *pp*. A red circular stamp is partially visible over the second and third staves.

Handwritten musical score for the second system, consisting of four staves. The notation continues from the first system, featuring a triplet of eighth notes in the first staff and a *cresc.* marking. The second and third staves have *p cresc.* markings, and the fourth staff has a *cresc.* marking. The system concludes with a *cresc.* marking over a series of ascending notes.

Handwritten musical score for the first system, consisting of four staves. The top two staves are in treble clef, and the bottom two are in bass clef. The key signature has two sharps (F# and C#). The music includes various rhythmic values, slurs, and ties. Dynamic markings include *p* and *pp*. There are some handwritten annotations, including an 'x' over a note in the first staff of the second measure.

Handwritten musical score for the second system, consisting of four staves. The top two staves are in treble clef, and the bottom two are in bass clef. The key signature has two sharps (F# and C#). The music includes various rhythmic values, slurs, and ties. Dynamic markings include *cresc.*, *mf*, and *p*. There are some handwritten annotations, including a sharp sign over a note in the first staff of the second measure.



Handwritten musical score for four staves. The first two staves are in treble clef, and the last two are in bass clef. The key signature is three sharps (F#, C#, G#). The score is divided into two measures by a vertical bar line. The first measure contains notes with a *dim.* (diminuendo) marking. The second measure contains notes with a *cresc.* (crescendo) marking. A dynamic marking *p* (piano) is present in the first measure of the first two staves. A red circular stamp is partially visible over the bottom staff in the second measure.

Handwritten musical score for four staves. The first two staves are in treble clef, and the last two are in bass clef. The key signature is three sharps (F#, C#, G#). The score is divided into two measures by a vertical bar line. The first measure contains notes with a *passionato* marking. The second measure contains notes with a *f* (forte) marking. A large section of the score, covering the right half of the second measure, is crossed out with multiple diagonal lines.

The first system of the handwritten musical score consists of four staves. The top staff is in treble clef and contains a highly melodic and technically demanding line with many sixteenth and thirty-second notes, including a triplet of eighth notes. The second staff is also in treble clef and features a more rhythmic accompaniment with quarter and eighth notes. The third and fourth staves are in bass clef and provide a harmonic foundation with sustained notes and simple rhythmic patterns. The key signature is two sharps (F# and C#), and the time signature is not explicitly shown but appears to be common time.

The second system of the handwritten musical score also consists of four staves. The top staff begins with a large fermata over a chord, followed by a series of chords and some melodic fragments. The second staff contains a series of sixteenth-note runs, each marked with a forte (f) dynamic. The third and fourth staves provide a steady harmonic accompaniment with quarter notes. The system concludes with a large, decorative flourish on the second staff. The key signature remains two sharps (F# and C#).



Handwritten musical score on four staves. The first staff begins with a treble clef, a key signature of two sharps (F# and C#), and a common time signature. It contains a complex melodic line with many beamed notes and rests. The second and third staves appear to be accompaniment, with the third staff starting with a bass clef. The fourth staff continues the accompaniment. There are some handwritten annotations, including an 'x' above the first staff and a 'b#' below the fourth staff.



Handwritten musical score on four staves. The first staff begins with a treble clef, a key signature of two sharps, and a common time signature. It features a melodic line with many beamed notes. The second, third, and fourth staves are accompaniment, with the second and third staves starting with a bass clef. The word 'dim.' (diminuendo) is written above the second, third, and fourth staves. The first staff ends with a double bar line and a fermata.

Handwritten musical score system 1, consisting of four staves. The top staff features a treble clef, a key signature of two sharps (F# and C#), and a common time signature. It contains two measures of music, each with a chordal structure indicated by a bracket and a sharp sign. The second and third staves are in a higher register, with the second staff starting with a *mp* dynamic marking. Both contain dense, sixteenth-note passages with slurs. The bottom staff is in a lower register, starting with a *mf* dynamic marking, and contains a few notes with slurs. The system concludes with a double bar line.

Handwritten musical score system 2, consisting of four staves. The top staff features a treble clef, a key signature of two sharps (F# and C#), and a common time signature. It contains two measures of music, each with a chordal structure indicated by a bracket and a sharp sign. The second and third staves are in a higher register, with the second staff starting with a *dim.* dynamic marking. Both contain dense, sixteenth-note passages with slurs. The bottom staff is in a lower register, starting with a *mf* dynamic marking, and contains a few notes with slurs. The system concludes with a double bar line.



3^{me} c. c.

4^{me} c. c.

The first system of the handwritten musical score consists of four staves. The top staff is in treble clef with a key signature of two sharps (F# and C#) and a common time signature. It begins with a half note followed by a dotted half note, both marked *dim.*. The second staff is in treble clef with the same key signature and time signature, containing a series of eighth notes. The third staff is in alto clef with the same key signature and time signature, featuring a half note followed by a dotted half note, both marked *dim.*. The fourth staff is in bass clef with the same key signature and time signature, starting with a half note marked *dim.*. The system concludes with a measure containing a *mp* dynamic marking and a melodic line with a double accent ($\langle \rangle$). The second system of the page is empty.

The second system of the handwritten musical score consists of four staves, all in the same key signature and time signature as the first system. Each staff contains dense musical notation, primarily consisting of eighth and sixteenth notes, with various phrasing slurs and ties. The notation is consistent across all four staves, suggesting a complex texture or a specific instrumental arrangement. The system concludes with a measure containing a melodic line with a double accent ($\langle \rangle$).

Handwritten musical score on four staves. The music is in treble and bass clefs with a key signature of two sharps (F# and C#). The score includes dynamic markings such as *cresc* and *mf*. There are two red circular stamps: one in the upper right corner with the text "CONSERVATOIRE NATIONAL DE MUSIQUE" and another in the lower right corner with the text "CHANG".

Handwritten musical score on four staves, continuing from the previous system. The music is in treble and bass clefs with a key signature of two sharps. It features dynamic markings including *dim*, *p*, and *molto espressivo*. The notation includes various rhythmic patterns and phrasing slurs.

The first system of the handwritten musical score consists of four staves. The top staff is in treble clef with a key signature of two sharps (F# and C#). It contains a series of eighth and sixteenth notes, many beamed together, with some notes marked with accents. The second staff is also in treble clef with the same key signature, featuring a more melodic line with some rests. The third staff is in alto clef with the same key signature, showing a rhythmic accompaniment. The bottom staff is in bass clef with the same key signature, providing a bass line with some notes marked with accents. The system concludes with a double bar line.

The second system of the handwritten musical score also consists of four staves. The top staff is in treble clef with a key signature of two sharps. It begins with a *cresc.* marking and contains a melodic line with some notes marked with accents. The second staff is in treble clef with the same key signature, featuring a melodic line with some notes marked with accents. The third staff is in alto clef with the same key signature, showing a rhythmic accompaniment. The bottom staff is in bass clef with the same key signature, providing a bass line with some notes marked with accents. The system concludes with a double bar line.



Handwritten musical score on four staves. The music is in treble and bass clefs with a key signature of two sharps (F# and C#). The notation includes various note values, rests, and dynamic markings such as *f* and *ff*. The piece concludes with a double bar line and repeat dots.



Handwritten musical score on four staves, continuing from the previous system. It features dynamic markings such as *crac.*, *Dim.*, and *f*. The notation includes complex rhythmic patterns and phrasing. The piece ends with a double bar line and repeat dots.

Handwritten musical score for the first system, consisting of four staves. The top two staves are in treble clef, and the bottom two are in bass clef. The key signature is two sharps (F# and C#). The first staff begins with a dynamic marking of *f* (forte) and a slur over the first two measures. The tempo marking *Lento piano* is written above the first staff. The second staff has a dynamic marking of *p* (piano) and a slur. The third staff has a dynamic marking of *p* and a slur. The fourth staff has a dynamic marking of *p* and a slur. The tempo marking *Sempre piano* is written below the fourth staff. The system concludes with a double bar line.

Handwritten musical score for the second system, consisting of four staves. The top two staves are in treble clef, and the bottom two are in bass clef. The key signature is two sharps (F# and C#). The first staff begins with a dynamic marking of *p* (piano) and a slur. The second staff has a dynamic marking of *p* and a slur. The third staff has a dynamic marking of *p* and a slur. The fourth staff has a dynamic marking of *p* and a slur. The system concludes with a double bar line.

IV.



All^o non troppo (126 = ♩)

Handwritten musical score for the first system, consisting of four staves. The music is in 4/4 time with a key signature of one sharp (F#). The first staff begins with a dynamic marking of *mf*. A large red letter 'A' is written above the first staff. The second and third staves feature piano accompaniment with dynamic markings of *p*. The fourth staff contains a bass line with dynamic markings of *p*.



Handwritten musical score for the second system, consisting of four staves. The music continues in 4/4 time with a key signature of one sharp. Large red letters 'B', 'C', and 'D' are written above the first staff. The second and third staves continue the piano accompaniment with dynamic markings of *p*. The fourth staff continues the bass line with dynamic markings of *p*.

E F G

Empty musical staves.

H I J

new a poco cresc.

Empty musical staves.



K **L**

The first system of the handwritten musical score consists of four staves. The top two staves are in treble clef, and the bottom two are in bass clef. The key signature is one sharp (F#). The music is written in a style characteristic of 18th or 19th-century manuscript notation. The first staff contains a melodic line with many slurs and accents. The second staff provides a counter-melody. The third staff is a more active melodic line with frequent sixteenth-note patterns. The fourth staff is a bass line with chords and single notes. The system concludes with a double bar line.

The second system of the handwritten musical score also consists of four staves, maintaining the same clefs and key signature as the first system. A handwritten marking "Sempit" is written above the first staff. The notation continues with similar melodic and harmonic patterns. The first staff shows a melodic line with a change in rhythm and dynamics. The second staff continues the counter-melody. The third staff features more complex rhythmic patterns. The fourth staff provides a steady bass line. The system concludes with a double bar line.



Handwritten musical score on a system of four staves. The first staff contains a melodic line with various ornaments and dynamic markings such as *f*, *f#*, and *f*. The second staff features chords with accents. The third and fourth staves provide harmonic support with rhythmic patterns and dynamic markings like *f* and *f#*.

Handwritten musical score on a second system of four staves. The first staff continues the melodic line with dynamic markings including *f*, *f#*, and *f*. The second staff has chords with accents and dynamic markings like *f* and *f#*. The third staff includes dynamic markings such as *f*, *f#*, and *f*, along with the instruction *cresc.* (crescendo). The fourth staff also includes the instruction *cresc.* and dynamic markings like *f* and *f#*.

Rit — — — — — *al^o*

The first system of the handwritten musical score consists of four staves. Above the staves, the tempo markings "Rit" and "*al^o*" are written. The music is written in treble and bass clefs. The first staff begins with a treble clef and a key signature of one flat. The second staff begins with a treble clef and a key signature of one sharp. The third staff begins with an alto clef and a key signature of one flat. The fourth staff begins with a bass clef and a key signature of one flat. The music features various rhythmic values, including eighth and sixteenth notes, and rests. Dynamic markings such as "mf" and "p" are used throughout the system. The notation includes slurs, ties, and accents.

Rit — — — — — *al^o*

The second system of the handwritten musical score also consists of four staves. Above the staves, the tempo markings "Rit" and "*al^o*" are written. The music continues from the first system, maintaining the same clefs and key signatures. The notation includes slurs, ties, and accents. Dynamic markings such as "mf" and "p" are used throughout the system. The music features various rhythmic values, including eighth and sixteenth notes, and rests.



Handwritten musical score for the first system, consisting of four staves. The notation includes treble and bass clefs, various note values (quarter, eighth, sixteenth notes), rests, and dynamic markings. The music is written in a single system across four staves.

Handwritten musical score for the second system, consisting of four staves. This system includes dynamic markings such as *mf* and *arco*. A red circular stamp is partially visible over the second staff. The notation continues with various note values and rests.

8

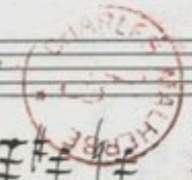
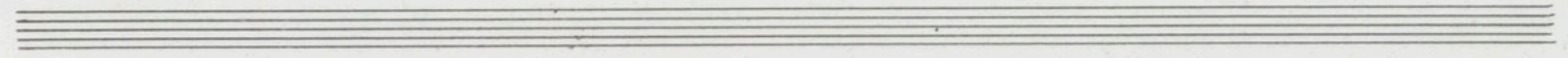
A B C D E F G H I J K L

A handwritten musical score for letters A through L. The score consists of four staves. The first staff contains the letters A through L in blue ink, each centered above a measure. The other three staves are empty, with faint pencil markings visible in the background.

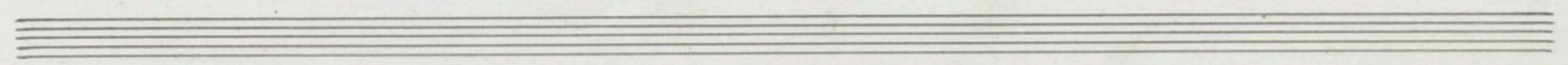
A handwritten musical score for letters A through L. The score consists of four staves. The first staff contains the letters A through L in blue ink, each centered above a measure. The other three staves contain handwritten musical notation in black ink, including notes, rests, and accidentals. The notation is dense and appears to be a complex piece of music.



Handwritten musical score for the first system, consisting of four staves. The notation includes treble and bass clefs, a key signature of one sharp (F#), and various rhythmic values such as eighth and sixteenth notes. The music features dynamic markings like accents (>) and slurs. The fourth staff contains several chords with sharp signs (#) indicating specific notes.



Handwritten musical score for the second system, consisting of four staves. The notation continues with treble and bass clefs, a key signature of one sharp (F#), and complex rhythmic patterns. The music includes dynamic markings such as accents (>) and slurs. The fourth staff features chords with sharp signs (#) and dynamic markings like 'ff' (fortissimo).



Lento

The first system of the handwritten musical score consists of four staves. The top staff is in treble clef and contains a melodic line with various notes and rests. The second staff is also in treble clef and contains a more complex melodic line with many beamed notes. The third staff is in alto clef and contains a melodic line with beamed notes. The bottom staff is in bass clef and contains a simple melodic line with notes and rests. There are several dynamic markings, including 'p' (piano) and '>' (accent), throughout the system. The tempo marking 'Lento' is written above the first staff.

The second system of the handwritten musical score also consists of four staves. The top staff is in treble clef and contains a melodic line with many beamed notes. The second staff is in treble clef and contains a melodic line with beamed notes. The third staff is in alto clef and contains a melodic line with beamed notes. The bottom staff is in bass clef and contains a simple melodic line with notes and rests. There are several dynamic markings, including 'cresc.' (crescendo) and '>' (accent), throughout the system.



Rit *a C^o*

Handwritten musical score for the first system, consisting of four staves. The music is in G major and 4/4 time. It features various dynamics including piano (p), mezzo-forte (mf), and forte (f), along with hairpins and slurs. The tempo is marked 'Rit' and the movement 'a C^o'.



Handwritten musical score for the second system, consisting of four staves. The music continues from the first system, featuring dynamics like piano (p) and forte (f).

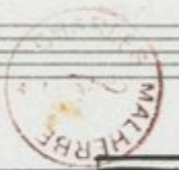
Handwritten musical score system 1, consisting of four staves. The first staff is in treble clef with a key signature of one sharp (F#) and a common time signature (C). It begins with a half note F# and a half note G# tied together. The second staff is in treble clef with a key signature of one sharp. The third staff is in treble clef with a key signature of one sharp. The fourth staff is in bass clef with a key signature of one sharp. The system contains four measures of music with various notes, rests, and slurs.

Handwritten musical score system 2, consisting of four staves. The first staff is in treble clef with a key signature of one sharp. The second staff is in treble clef with a key signature of one sharp. The third staff is in treble clef with a key signature of one sharp and contains the handwritten word "Wizz" above a note. The fourth staff is in bass clef with a key signature of one sharp. The system contains four measures of music with various notes, rests, and slurs.

Two empty musical staves at the bottom of the page, each consisting of five horizontal lines.



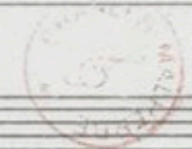
Handwritten musical score on a system of four staves. The music is in G major (one sharp) and 3/4 time. The first staff features a melodic line with slurs and accents. The second staff provides harmonic support with chords and moving lines. The third and fourth staves contain bass lines. A dynamic marking of *mf* is present in the third staff.



Handwritten musical score on a second system of four staves. The notation continues from the first system. The first two staves show intricate melodic and harmonic patterns. The third and fourth staves provide a bass line. A dynamic marking of *mf* is visible in the fourth staff.

Handwritten musical score for the first system, consisting of four staves. The top two staves are in treble clef, and the bottom two are in bass clef. The music is written in a key with one sharp (F#) and a 4/4 time signature. The notation includes eighth and sixteenth notes, rests, and dynamic markings such as *cresc.* (crescendo) in the second and third staves. There are also some handwritten annotations like 'x' and 'f' above notes.

Handwritten musical score for the second system, consisting of four staves. The top two staves are in treble clef, and the bottom two are in bass clef. The music is written in a key with one sharp (F#) and a 4/4 time signature. The notation includes eighth and sixteenth notes, rests, and dynamic markings such as *poco a poco più animato* (poco a poco più animato) written above the first staff. There are also some handwritten annotations like 'f' (forte) below notes in the second and third staves. The system concludes with a double bar line and a decorative flourish on the right.



Rit

sempre ff

sempre ff

sempre ff

sempre ff

rinf

rinf

rinf

rinf

Andante (126 = ♩)

dim.

dim.



Handwritten musical score for the first system, consisting of four staves. The music is in G major (one sharp) and 4/4 time. The first staff contains a melodic line with various ornaments and slurs. The second staff features a more active melodic line with slurs and accents. The third staff provides harmonic support with chords and moving lines. The fourth staff contains a bass line with chords and a few melodic fragments. A dynamic marking *mf dim.* is present in the third staff. A red circular stamp with the text "CHARLES MALIBRE" is located in the lower right quadrant of this system.

Handwritten musical score for the second system, consisting of four staves. This system continues the piece with similar melodic and harmonic textures. The first staff has a melodic line with slurs and accents. The second staff continues the melodic development. The third staff provides harmonic accompaniment. The fourth staff contains a bass line with chords and a few melodic fragments. A dynamic marking *mf* is present at the end of the system.

Handwritten musical score for the first system, consisting of four staves. The top two staves are in treble clef with a key signature of one sharp (F#). The bottom two staves are in bass clef with a key signature of one sharp (F#). The music features melodic lines with slurs and ties, and a bass line with chords and single notes. Dynamic markings include *dim* (diminuendo) and *p* (piano).

Handwritten musical score for the second system, consisting of four staves. The top two staves are in treble clef with a key signature of one sharp (F#). The bottom two staves are in bass clef with a key signature of one sharp (F#). The music continues with melodic and harmonic development, including slurs, ties, and various note values. The system concludes with a double bar line.



Handwritten musical score for the first system, consisting of four staves. The music is written in treble and bass clefs with a key signature of one sharp (F#). The notation includes various note values, rests, and dynamic markings such as *pp* and *mf*. The first staff begins with a treble clef and a sharp sign, followed by a series of eighth and quarter notes. The second and third staves continue the melodic lines, while the fourth staff provides a bass line with similar rhythmic patterns.



Handwritten musical score for the second system, also consisting of four staves. This system features more complex rhythmic patterns, including sixteenth notes and triplets. The notation includes dynamic markings such as *pp*, *mf*, and *ff*. The first staff has some initial scribbles and a sharp sign. The second and third staves show a melodic line with a sharp sign and a *mf* marking. The fourth staff continues the bass line with a *ff* marking. The system concludes with a double bar line.

The first system of the handwritten musical score consists of four staves. The top staff is in treble clef with a key signature of one sharp (F#) and contains four measures of music. The first measure has a chord of F#4, G#4, A4, B4, and C5, with a dynamic marking of *f*. The second measure has a whole note chord of C5. The third and fourth measures have whole notes on C5 and G#4, with a dynamic marking of *pp*. The second staff is in treble clef with a key signature of one sharp and contains four measures. The first measure has a chord of F#4, G#4, A4, B4, and C5, with a dynamic marking of *mf*. The second measure has a chord of F#4, G#4, A4, B4, and C5, with a dynamic marking of *pp*. The third measure has a chord of F#4, G#4, A4, B4, and C5, with a dynamic marking of *p*. The fourth measure has a chord of F#4, G#4, A4, B4, and C5, with a dynamic marking of *h*. The third staff is in alto clef with a key signature of one sharp and contains four measures. The first measure has a chord of F#4, G#4, A4, B4, and C5, with a dynamic marking of *mf*. The second measure has a chord of F#4, G#4, A4, B4, and C5, with a dynamic marking of *pp*. The third measure has a chord of F#4, G#4, A4, B4, and C5, with a dynamic marking of *#0*. The fourth measure has a chord of F#4, G#4, A4, B4, and C5, with a dynamic marking of *0*. The bottom staff is in bass clef with a key signature of one sharp and contains four measures. The first measure has a chord of F#4, G#4, A4, B4, and C5, with a dynamic marking of *mf*. The second measure has a chord of F#4, G#4, A4, B4, and C5, with a dynamic marking of *pp*. The third measure has a chord of F#4, G#4, A4, B4, and C5, with a dynamic marking of *#0*. The fourth measure has a chord of F#4, G#4, A4, B4, and C5, with a dynamic marking of *h*.

The second system of the handwritten musical score consists of four staves. The top staff is in treble clef with a key signature of one sharp and contains four measures. The first measure has a chord of F#4, G#4, A4, B4, and C5, with a dynamic marking of *f*. The second measure has a chord of F#4, G#4, A4, B4, and C5, with a dynamic marking of *p*. The third measure has a chord of F#4, G#4, A4, B4, and C5, with a dynamic marking of *p*. The fourth measure has a chord of F#4, G#4, A4, B4, and C5, with a dynamic marking of *h p*. The second staff is in treble clef with a key signature of one sharp and contains four measures. The first measure has a chord of F#4, G#4, A4, B4, and C5, with a dynamic marking of *#0*. The second measure has a chord of F#4, G#4, A4, B4, and C5, with a dynamic marking of *h0*. The third measure has a chord of F#4, G#4, A4, B4, and C5, with a dynamic marking of *0*. The fourth measure has a chord of F#4, G#4, A4, B4, and C5, with a dynamic marking of *#0*. The third staff is in alto clef with a key signature of one sharp and contains four measures. The first measure has a chord of F#4, G#4, A4, B4, and C5, with a dynamic marking of *0*. The second measure has a chord of F#4, G#4, A4, B4, and C5, with a dynamic marking of *0*. The third measure has a chord of F#4, G#4, A4, B4, and C5, with a dynamic marking of *#0*. The fourth measure has a chord of F#4, G#4, A4, B4, and C5, with a dynamic marking of *#0*. The bottom staff is in bass clef with a key signature of one sharp and contains four measures. The first measure has a chord of F#4, G#4, A4, B4, and C5, with a dynamic marking of *#0*. The second measure has a chord of F#4, G#4, A4, B4, and C5, with a dynamic marking of *h0*. The third measure has a chord of F#4, G#4, A4, B4, and C5, with a dynamic marking of *#0*. The fourth measure has a chord of F#4, G#4, A4, B4, and C5, with a dynamic marking of *#0*.



1899
C. L...