

CHORALE PRELUDE

(from: Vater unser im himmelreich - 1724)

Adapted for Trumpet and Organ

Score (03':40'')

Peter Gerritz (1681 - 1728)

Arr. Michel Rondeau

1. Praeludium ♩ = 90

Trumpet in C

Organ

This system shows the first three measures of the Praeludium. The Trumpet in C part is in the treble clef, and the Organ part is in the bass clef. The key signature has one flat (B-flat), and the time signature is common time (C). The organ part features a rhythmic accompaniment of eighth and sixteenth notes.

C Tpt.

Org.

This system covers measures 4 to 6. The C Trumpet part continues with eighth and sixteenth notes. The Organ part has a more complex texture with sixteenth-note runs in the right hand and a steady eighth-note accompaniment in the left hand.

C Tpt.

Org.

This system covers measures 7 to 9. Measure 9 features a trill (tr) in the C Trumpet part. The Organ part continues with its intricate accompaniment.

2. Choral

C Tpt.

Org.

This system covers measures 10 to 12 of the Choral section. The C Trumpet part has a melodic line with accents. The Organ part provides a harmonic accompaniment with sustained chords and moving lines.

CHORALE PRELUDE - Gerritz - Score

C Tpt.

17

Org.

17

Detailed description: This system covers measures 17 to 21. The C Trumpet part (top staff) begins with a treble clef and a key signature of one flat. It features a melodic line with eighth and sixteenth notes, including a trill in measure 17 and a fermata in measure 21. The Organ part (bottom two staves) is in bass clef and provides harmonic support with chords and moving lines in both hands.

C Tpt.

22

Org.

22

Detailed description: This system covers measures 22 to 27. The C Trumpet part continues the melodic theme with various rhythmic values and rests. The Organ part maintains its harmonic accompaniment, with some chords marked with a fermata in measure 27.

C Tpt.

28

3. Variatio

Org.

28

Detailed description: This system covers measures 28 to 33. The C Trumpet part has a more active melodic line with eighth notes and a trill. The Organ part continues with its accompaniment. The section is labeled "3. Variatio" in the upper right.

C Tpt.

34

Org.

34

Detailed description: This system covers measures 34 to 38. The C Trumpet part has a melodic line with a trill in measure 34. The Organ part provides harmonic support with chords and moving lines in both hands.

CHORALE PRELUDE - Gerritz - Score

40

C Tpt.

Org.

Detailed description: This system covers measures 40 to 45. The C Trumpet part (top staff) begins with a trill on a dotted quarter note, followed by a half note, and then rests for the remainder of the system. The Organ part (bottom two staves) features a complex texture with chords and moving lines in both the right and left hands, including a trill in the right hand.

46

C Tpt.

Org.

Detailed description: This system covers measures 46 to 51. The C Trumpet part (top staff) has a melodic line with a trill on a dotted quarter note, followed by eighth notes, and then rests. The Organ part (bottom two staves) continues with a dense harmonic texture, featuring a trill in the right hand and a melodic line in the left hand.

52

C Tpt.

Org.

Detailed description: This system covers measures 52 to 58. The C Trumpet part (top staff) has a melodic line with a trill on a dotted quarter note, followed by quarter notes, and then rests. The Organ part (bottom two staves) maintains the harmonic texture with a trill in the right hand and a melodic line in the left hand.

59

C Tpt.

Org.

Detailed description: This system covers measures 59 to 64. The C Trumpet part (top staff) has a melodic line with a trill on a dotted quarter note, followed by quarter notes, and then rests. The Organ part (bottom two staves) continues with the harmonic texture, featuring a trill in the right hand and a melodic line in the left hand.

CHORALE PRELUDE - Gerritz - Score

66

C Tpt.

Org.

Detailed description: This system covers measures 66 to 71. The C Trumpet part (top staff) has rests in measures 66-67, then plays a sequence of notes: G4 (half), F#4 (quarter), E4 (quarter), D4 (quarter), C4 (half). The Organ part (bottom two staves) features a complex texture. The right hand (top staff) plays chords and moving lines, including a trill on G4 in measure 71. The left hand (bottom staff) plays a steady eighth-note accompaniment.

72

C Tpt.

Org.

Detailed description: This system covers measures 72 to 76. The C Trumpet part (top staff) has rests in measures 72-76. The Organ part (bottom two staves) continues the accompaniment. The right hand (top staff) has a melodic line with trills on G4 and F#4 in measures 72-73, and a trill on G4 in measure 76. The left hand (bottom staff) maintains the eighth-note accompaniment.

77

C Tpt.

Org.

Detailed description: This system covers measures 77 to 81. The C Trumpet part (top staff) has rests in measures 77-78, then plays: G4 (half), F#4 (quarter), E4 (quarter), D4 (quarter), C4 (half). The Organ part (bottom two staves) features a melodic line in the right hand (top staff) with a trill on G4 in measure 81, and a steady accompaniment in the left hand (bottom staff).

CHORALE PRELUDE

(from: Vater unser im himmelreich - 1724)

Adapted for Trumpet and Organ

Trumpet in B \flat

Peter Gerritz (1681 - 1728)

Arr. Michel Rondeau

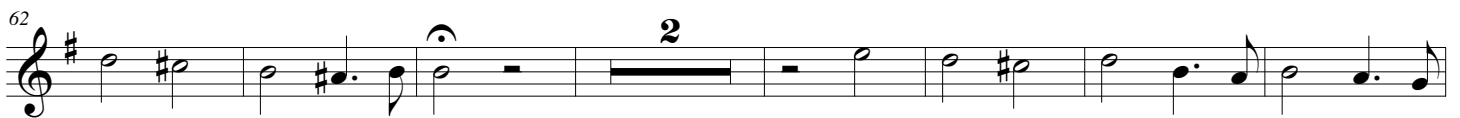
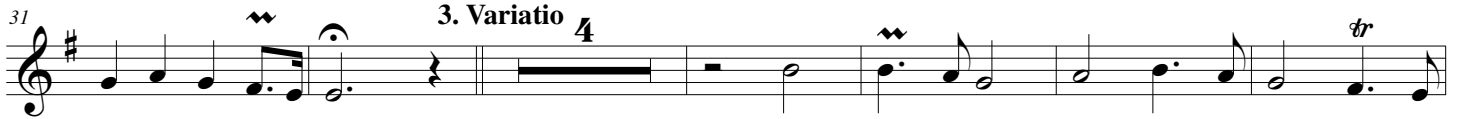
1. Praeludium $\text{♩} = 90$



2. Choral



3. Variatio



CHORALE PRELUDE

(from: Vater unser im himmelreich - 1724)

Adapted for Trumpet and Organ

Trumpet in C

Peter Gerritz (1681 - 1728)

Arr. Michel Rondeau

1. Praeludium ♩ = 90



2. Choral



3. Variatio



CHORALE PRELUDE

(from: Vater unser im himmelreich - 1724)

Adapted for Trumpet and Organ

Peter Gerritz (1681 - 1728)

Arr. Michel Rondeau

Organ

Trumpet in C

1. Praeludium ♩ = 90

C Tpt.

Org.

C Tpt.

Org.

C Tpt.

Org.

2. Choral

CHORALE PRELUDE - Gerritz - Organ

C Tpt.

17

Org.

17

Detailed description: This system contains measures 17 through 21. The C Trumpet part (top staff) begins with a treble clef and a key signature of one flat. It features a melodic line with eighth and sixteenth notes, including a trill in measure 17 and a fermata in measure 21. The Organ part (bottom two staves) starts with a bass clef and a key signature of one flat. It provides a harmonic accompaniment with chords and moving lines in both hands, including a trill in the right hand in measure 17.

C Tpt.

22

Org.

22

Detailed description: This system contains measures 22 through 27. The C Trumpet part continues the melodic line with various note values and rests. The Organ part continues the accompaniment, featuring a trill in the right hand in measure 22 and a fermata in measure 27.

C Tpt.

28

Org.

28

3. Variatio

Detailed description: This system contains measures 28 through 33. The C Trumpet part has a fermata in measure 28 and then continues with a melodic line. The Organ part continues the accompaniment. A section titled "3. Variatio" begins in measure 30, marked with a fermata in the right hand of the organ.

C Tpt.

34

Org.

34

Detailed description: This system contains measures 34 through 38. The C Trumpet part has a fermata in measure 34 and then continues with a melodic line. The Organ part continues the accompaniment, featuring a trill in the right hand in measure 34.

CHORALE PRELUDE - Gerritz - Organ

C Tpt. ⁴⁰ *tr*

Org. ⁴⁰

C Tpt. ⁴⁶ *tr*

Org. ⁴⁶

C Tpt. ⁵² *tr*

Org. ⁵²

C Tpt. ⁵⁹

Org. ⁵⁹

CHORALE PRELUDE - Gerritz - Organ

C Tpt.

66

Org.

C Tpt.

72

Org.

C Tpt.

77

Org.