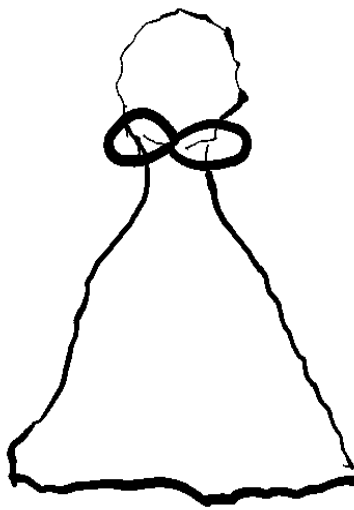


Jens Klimek

Angels without wings but a bow tie



Angels without wings but a bow tie

for violoncello and clarinet

Jens Klimek

♩ = 80
hard attack on the note
and abrupt reducing
of the tone

light air blasts on the tone

Clarinet in B \flat

ffpp ffpp sim. pp

Violoncello

pizz. arco

ff pp

Cl.

ffpp sim. ppp fff

arco sul pont.

Vc.

pizz. tr.

ff pp

♩ = 60 5

Cl.

p p pp ff

bouncing bow

Vc.

mp mf

Cl.

ff ppp p p

Vc.

ff pp mf p 5 mf

pizz.

Clarinet in B \flat

Cl. *mf* > *col legno* *mf* > *mf* > *pp*

Vc. *p* *mf* > *arco estr. sul pont.* *pizz.* *p*

Cl. *p* *3* *ppp* *f* *tr*

Vc. *arco bouncing bow* *mf* *5* *pizz.* *f* *3* *pp* *f* *arco tr*


Cl. *p* *3* *mp leggiero* *5*

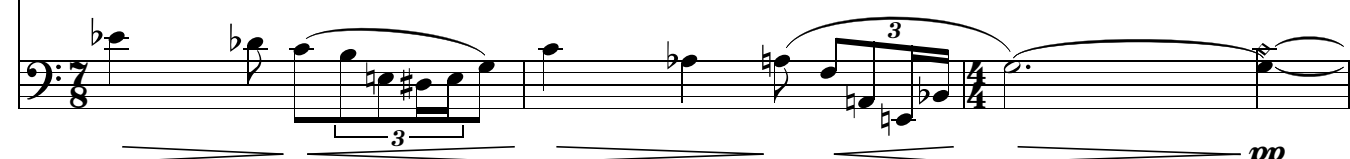
Vc. *pizz.* *p* *arco* *pp*

Cl. *speak* *3* *rit.* *♩ = 50* *3* *mp*

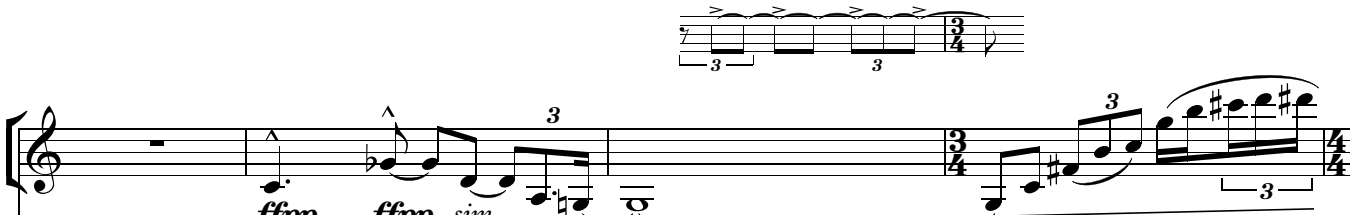
Vc. *tr sul pont.* *3* *mf* *3*


Looks like we've come to a so-lu-tion

Cl.  *have-n't we?*

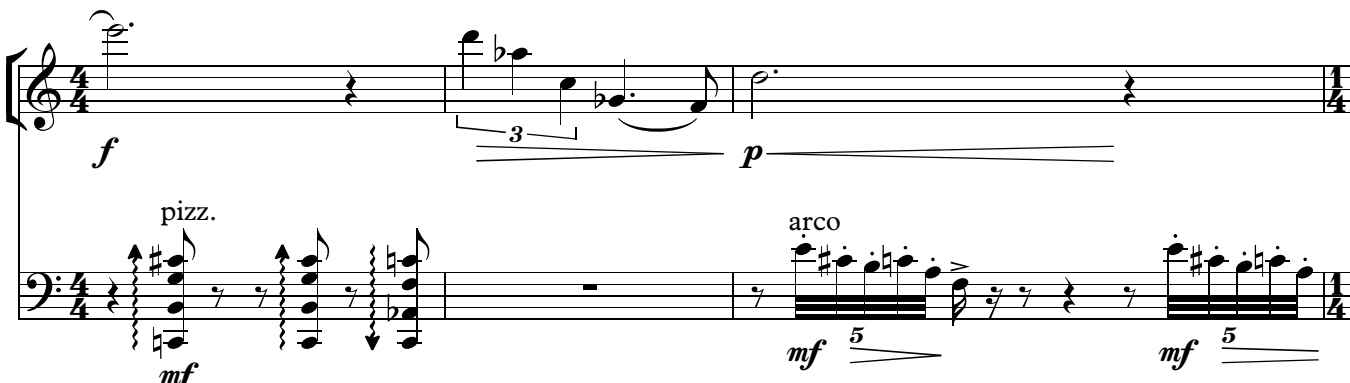
Vc.  *pp*

Detailed description: This system shows the first two staves. The Clarinet part (Cl.) is in treble clef, 7/8 time, and features two triplet eighth-note figures. The Violoncello part (Vc.) is in bass clef, 7/8 time, and features a triplet eighth-note figure. The lyrics "have-n't we?" are written under the Clarinet staff. The Violoncello part ends with a *pp* dynamic marking.

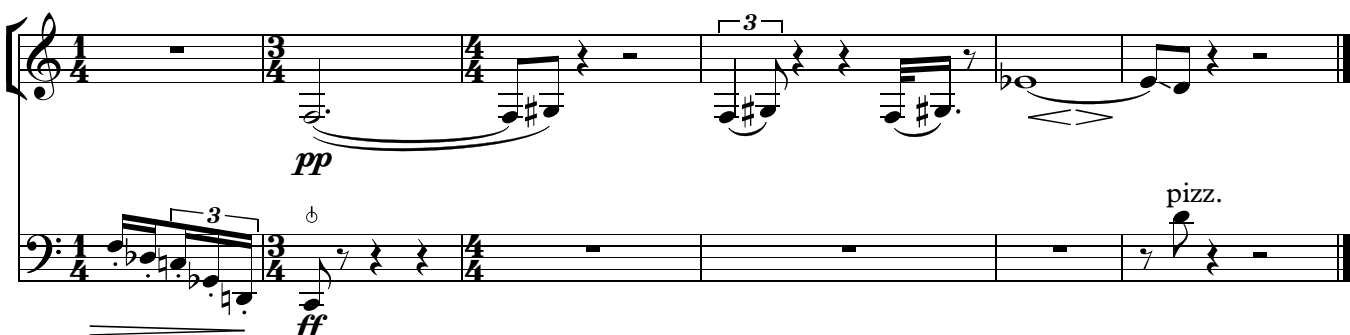
Cl.  *ffpp ffpp sim.*

Vc.  *ff*

Detailed description: This system shows the second two staves. The Clarinet part (Cl.) is in treble clef, 4/4 time, and features a triplet eighth-note figure. The Violoncello part (Vc.) is in bass clef, 4/4 time, and features a triplet eighth-note figure. The lyrics "ffpp ffpp sim." are written under the Clarinet staff. The Violoncello part starts with a *ff* dynamic marking and includes a *pizz.* marking.

Vc.  *f p mf*

Detailed description: This system shows the third two staves. The Violoncello part (Vc.) is in bass clef, 4/4 time, and features a triplet eighth-note figure. The dynamics *f*, *p*, and *mf* are written under the staff. The Violoncello part includes *pizz.* and *arco* markings.

Vc.  *pp ff*

Detailed description: This system shows the fourth two staves. The Violoncello part (Vc.) is in bass clef, 4/4 time, and features a triplet eighth-note figure. The dynamics *pp* and *ff* are written under the staff. The Violoncello part includes a *pizz.* marking.

Clarinet in B \flat

Angels without wings but a bow tie

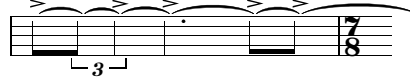
for violoncello and clarinet

light air blasts on the tone

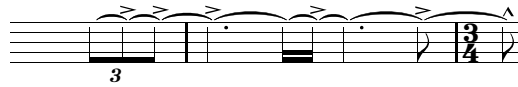
Jens Klimek

$\text{♩} = 80$

*hard attack on the note
and abrupt reducing
of the tone*



ffpp ffpp sim. pp



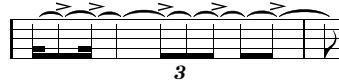
ffpp sim. ppp fff

$\text{♩} = 60$ 5

p p pp ff

ff ppp p p

Clarinet in B \flat



mf mf mf pp

tr *p* 3 *ppp* *f* *p*

5 *mp* *leggiero* speak 3 3 rit. . .
Looks like we've come to a so - lu - tion

$\text{♩} = 50$ *mp* 3 3 3

have-n't we? *ffpp ffpp sim.* 3

34 *f* 3 3 *p*

pp 3

Violoncello

Angels without wings but a bow tie

for violoncello and clarinet

Jens Klimek

♩ = 80
pizz. arco pizz.
ff *pp* *ff*

5 arco sul pont. *tr* *pp* *mp* *mf*
♩ = 60 bouncing bow 5

10 *ff* *pp* *mf* *p* *mf*

13 col legno arco estr. sul pont. pizz. *p* *mf* *p*

17 arco bouncing bow pizz. arco *tr*
mf *mf* *f* *pp* *f*

21 pizz. arco *p* *pp* V.S.

25 *tr.* *sul pont.* *rit.* $\text{♩} = 50$

mf

29 *pizz.*

mf *pp* *ff*

35 *pizz.* *arco*

mf *mf* *mf*

38 *ff* *pizz.*

ff *mf*