

Messe de requiem : Introit et
Kyrie (manuscrit autographe)
/ Gabriel Fauré

Fauré, Gabriel (1845-1924). Compositeur. Messe de requiem : Introït et Kyrie (manuscrit autographe) / Gabriel Fauré. 1888.

1/ Les contenus accessibles sur le site Gallica sont pour la plupart des reproductions numériques d'œuvres tombées dans le domaine public provenant des collections de la BnF. Leur réutilisation s'inscrit dans le cadre de la loi n°78-753 du 17 juillet 1978 :

- La réutilisation non commerciale de ces contenus est libre et gratuite dans le respect de la législation en vigueur et notamment du maintien de la mention de source.

- La réutilisation commerciale de ces contenus est payante et fait l'objet d'une licence. Est entendue par réutilisation commerciale la revente de contenus sous forme de produits élaborés ou de fourniture de service.

[CLIQUER ICI POUR ACCÉDER AUX TARIFS ET À LA LICENCE](#)

2/ Les contenus de Gallica sont la propriété de la BnF au sens de l'article L.2112-1 du code général de la propriété des personnes publiques.

3/ Quelques contenus sont soumis à un régime de réutilisation particulier. Il s'agit :

- des reproductions de documents protégés par un droit d'auteur appartenant à un tiers. Ces documents ne peuvent être réutilisés, sauf dans le cadre de la copie privée, sans l'autorisation préalable du titulaire des droits.

- des reproductions de documents conservés dans les bibliothèques ou autres institutions partenaires. Ceux-ci sont signalés par la mention Source gallica.BnF.fr / Bibliothèque municipale de ... (ou autre partenaire). L'utilisateur est invité à s'informer auprès de ces bibliothèques de leurs conditions de réutilisation.

4/ Gallica constitue une base de données, dont la BnF est le producteur, protégée au sens des articles L341-1 et suivants du code de la propriété intellectuelle.

5/ Les présentes conditions d'utilisation des contenus de Gallica sont régies par la loi française. En cas de réutilisation prévue dans un autre pays, il appartient à chaque utilisateur de vérifier la conformité de son projet avec le droit de ce pays.

6/ L'utilisateur s'engage à respecter les présentes conditions d'utilisation ainsi que la législation en vigueur, notamment en matière de propriété intellectuelle. En cas de non respect de ces dispositions, il est notamment passible d'une amende prévue par la loi du 17 juillet 1978.

7/ Pour obtenir un document de Gallica en haute définition, contacter utilisation.commerciale@bnf.fr.

C.1925

Messe de Requiem

Introit et Kyrie



Gabriel Faure

Introit et Kyrie

offertorium

Sanctus

Misere

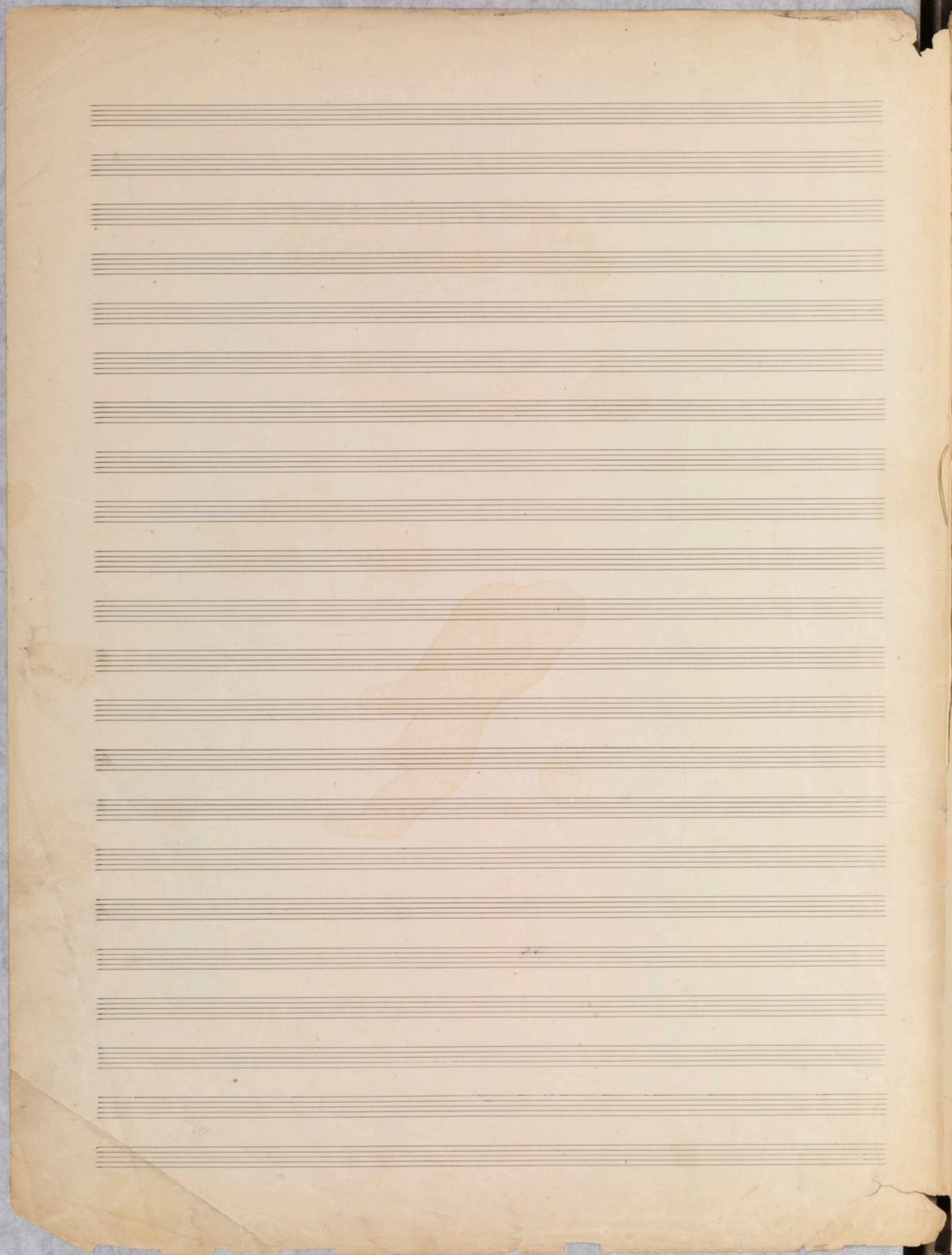
Agnus Dei

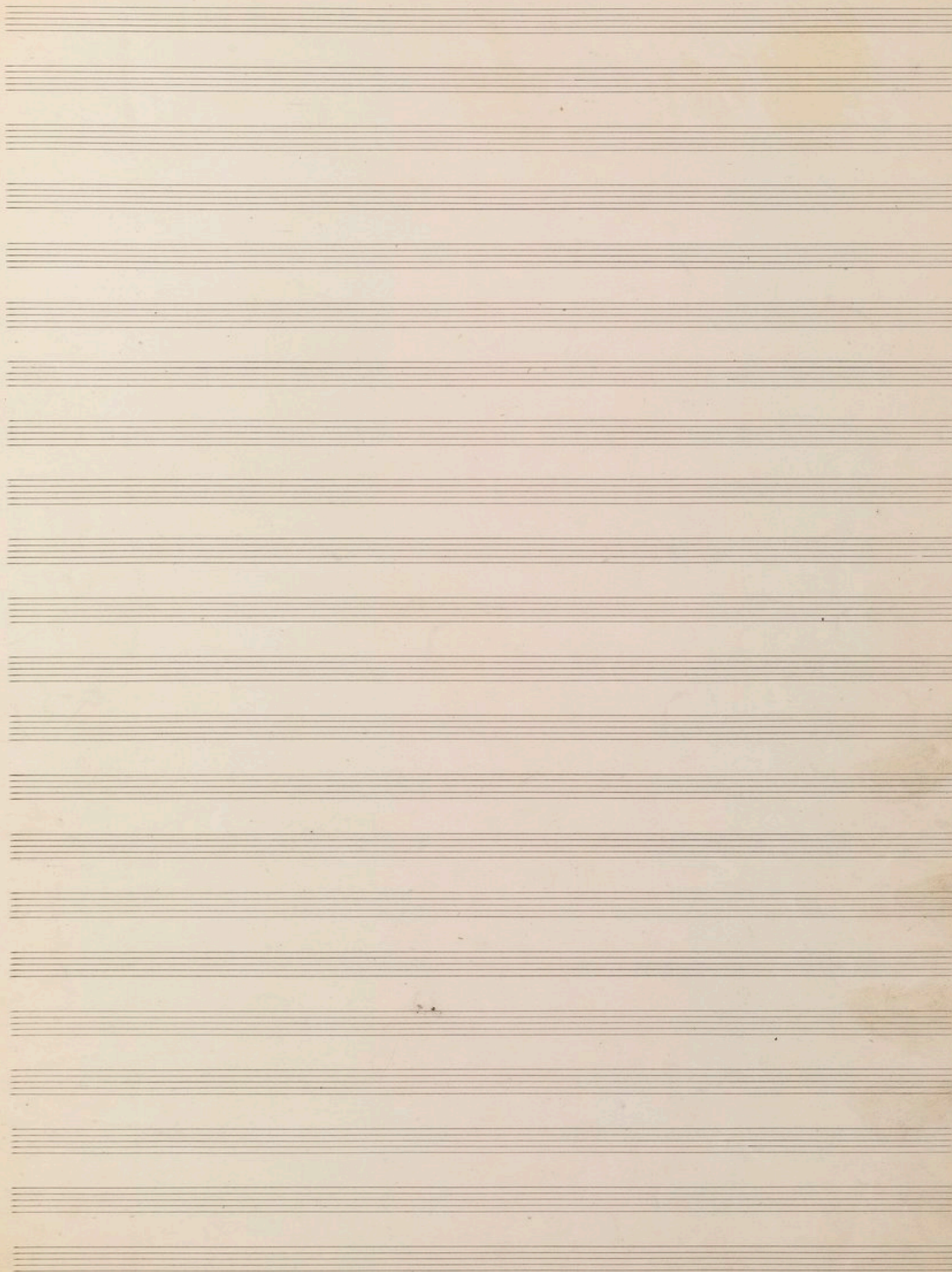
In paradisum



M. 410

Laure





Casa



Largo

1^{er} alto

2^{em} alto

1^{er} Violoncelle

2^{em} Violoncelle

Contre basse

Soprano

Alto

Ténor

Basse

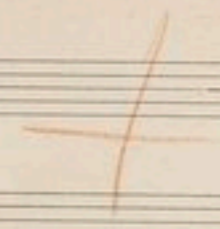
Orgue

ff *pp* *cat 1^o* *pp* *pp* *pp* *pp*

Re - qui - em ce - ta - nam
dis - ce - ta - nam
dis - ce - ta - nam



pp Do - na e - is Do - mi - ne *cresc.*
pp Do - na e - is Do - mi - ne *cresc.* Et lux per



Empty musical staves at the top of the page.

Three staves of musical notation. Each staff begins with the instruction *sostenuto* and *ff*. The notation includes notes, rests, and dynamic markings such as *dimin.* and *p*. There are double bar lines with repeat slashes on each staff.

Two staves of musical notation with lyrics. The lyrics are: *pe - tri - a lu - ce - at* and *mi - nis lu - ce - at*. The notation includes notes, rests, and dynamic markings such as *Dim.* and *p*.

Two staves of musical notation. The notation includes notes, rests, and dynamic markings such as *ff* and *p*.

Three empty musical staves at the bottom of the page.

Handwritten musical notation on two staves. The first staff contains a dynamic marking *ff* and notes b_0 and b_0 . The second staff is empty.

Handwritten musical notation for three staves. The first staff has a dynamic marking *ff* and notes b_0 and b_0 . The second staff has a dynamic marking *ff* and notes b_0 and b_0 . The third staff has a dynamic marking *ff* and notes b_0 and b_0 . Slashes indicate rests or cuts in the music.



Vocal line with lyrics: *pp* Lu - ce - at e - - io. The notation includes notes and rests corresponding to the syllables.

Handwritten musical notation for a single staff, likely a basso continuo line. It includes notes, rests, and dynamic markings such as *ff* and *pp*.

Handwritten musical notation at the top of the page, including a treble clef, a key signature of one sharp (F#), and a time signature of 3/4. The notation consists of several staves with notes and rests.

Andante moderato

Main body of handwritten musical notation, heavily obscured by a dense grid of diagonal lines. The notation includes various notes, rests, and dynamic markings such as *ff* and *f*. The grid is composed of multiple overlapping lines, creating a complex pattern that covers most of the page's content.

Handwritten musical notation at the bottom of the page, including a treble clef, a key signature of one sharp (F#), and a time signature of 3/4. The notation consists of several staves with notes and rests.

Handwritten musical notation on three staves, including a treble clef and a 4/4 time signature.

Andante moderato

Handwritten musical notation for a piano accompaniment, featuring a grand staff with treble and bass clefs. The music includes a melodic line with slurs and a bass line with chords. A handwritten note "col 1^o" is present above the staff.

Andante moderato

Handwritten musical notation for a vocal line, showing a vocal staff with a treble clef and lyrics. The lyrics include "Re - qui - em a". The tempo marking *Andante moderato* is written above the staff.

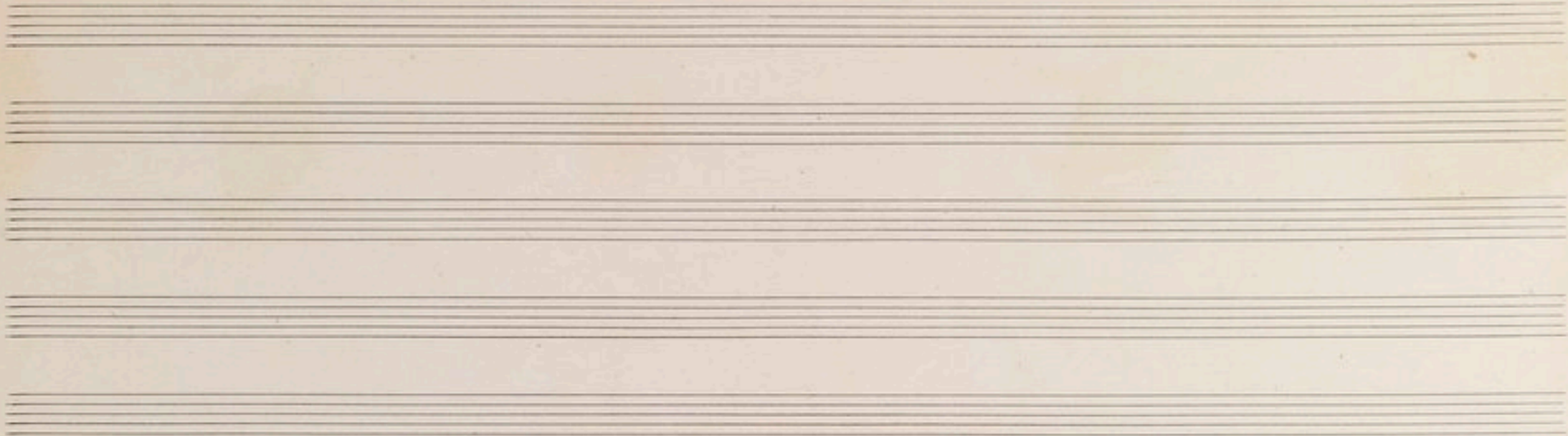


delca

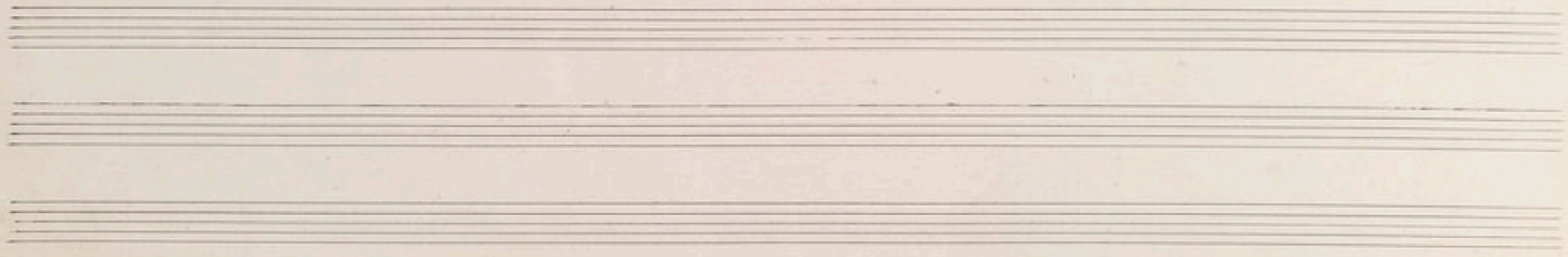
Re - qui - em a

Andante Moderato

Handwritten musical notation for a piano accompaniment, featuring a grand staff with treble and bass clefs. The music includes a melodic line with slurs and a bass line with chords.



A large section of musical notation is centered on the page. It features a grid of diamond-shaped cells formed by diagonal lines. The notation is written in black ink on the staves. The top two staves of this section contain clear musical notes, including quarter notes, eighth notes, and rests, with some notes beamed together. The lower staves are filled with dense, repetitive scribbled lines, possibly representing a rhythmic pattern or a specific texture. A red circular stamp is located on the left side of this section, partially overlapping the first few staves. The stamp contains some illegible text.





-ter - - nam do - - na e - - is do - - mi - - ne , et sus - - ce - -

X *Wing* ^{llh}

Handwritten musical notation on two staves. The top staff begins with a treble clef and contains several notes, including a quarter note and a half note. The bottom staff contains a few notes, including a half note.

Handwritten musical notation for piano accompaniment, consisting of four staves. The top two staves use treble clefs and the bottom two use bass clefs. The notation includes various notes, rests, and slurs, indicating a complex piece of music.

Four empty musical staves. A red circular stamp is visible on the left side of the first staff.

Handwritten musical notation with lyrics: "pe tu a tra se det ce at e is". The notation includes a treble clef and notes corresponding to the lyrics.

Handwritten musical notation for piano accompaniment, consisting of two staves. The top staff uses a treble clef and the bottom staff uses a bass clef. The notation includes various notes, rests, and slurs.

Four empty musical staves.

Handwritten musical notation on two staves at the top of the page. The first staff contains a few notes, including a half note and a quarter note. The second staff contains a few notes, including a half note and a quarter note. There are some faint markings and a vertical line on the right side of the staves.

Handwritten musical notation for a vocal line and piano accompaniment. The vocal line is on a single staff with a treble clef, featuring a melodic line with various note values and rests. The piano accompaniment consists of two staves with a grand staff clef, showing chords and moving lines. The notation is in a cursive, handwritten style.



Handwritten musical notation with lyrics. The lyrics are "Re - qui - em a - ter - ram So - ra". The notation includes a vocal line with a treble clef and a piano accompaniment with a grand staff clef. The lyrics are written below the vocal line. There is a handwritten instruction "f sempre" above the first few notes of the vocal line.

Handwritten musical notation for piano accompaniment. It consists of two staves with a grand staff clef, showing chords and moving lines. The notation is in a cursive, handwritten style.

Empty musical staves at the top of the page.

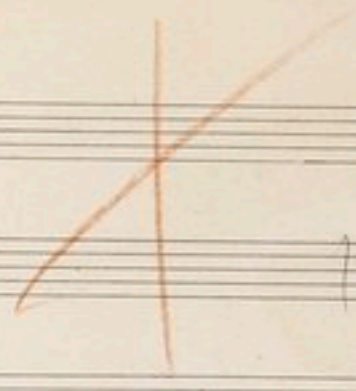
Handwritten musical notation for the first system, consisting of four staves with various notes and rests.



Handwritten musical notation for the second system, including a vocal line with lyrics: *Do - na e - is re - qui - em et lux per - pe - tu - a tu -*

Handwritten musical notation for the third system, continuing the piece with various notes and rests.

Handwritten musical notation for the fourth system, including a vocal line with lyrics: *Do - na e - is re - qui - em et lux per - pe - tu - a tu -*



Handwritten musical notation on two staves, partially obscured by a red 'X'. The notation includes notes, rests, and dynamic markings such as *f* and *ff*.

Handwritten musical notation for a piano accompaniment, consisting of four staves. It features complex rhythmic patterns, including sixteenth and thirty-second notes, and dynamic markings such as *f*, *soften.*, and *dim.*



Handwritten musical notation for a vocal line on a single staff. The lyrics "ce - at e - - - is" are written below the notes.

Handwritten musical notation for a piano accompaniment, consisting of two staves. It includes dynamic markings such as *f* and *dimin.*

p
p sempre
col 1^o

dolce
Le de - cet hym - nus, Je - us, in Pi -

p sempre

col 10

p pizz

-on, et ti - bi red - de - tur ro - tum in Je - su - sa



~~A~~ Temp

Com

ff
p
ff
p

Handwritten musical score for voice and piano. The score consists of several systems of staves. The top system shows a vocal line with lyrics and piano accompaniment. The lyrics are: *lem. f ex - au - di, ex - au - di o - ra - ti - o - nem*. The second system continues the lyrics: *f ex - au - di, ex - au - di o - ra - ti - o - nem*. The piano part features chords and melodic lines with dynamic markings such as *f*, *p*, and *ff*. There are also some markings like *once* and *ff* above the piano part. The bottom system shows the continuation of the piano accompaniment with chords and melodic lines.

Handwritten musical notation on two staves at the top of the page, featuring notes and rests.

Handwritten musical notation on three staves. The first staff has a large section of the beginning scribbled out with black ink. The notation includes notes, rests, and dynamic markings such as *f*.

Handwritten musical notation on three staves with lyrics underneath. The first staff is heavily scribbled out. The lyrics are "me - am, f ad te om - - nis". The notation includes notes, rests, and dynamic markings such as *f* and *ad*.

Handwritten musical notation on three staves. The first staff has a large section of the beginning scribbled out with black ink. The notation includes notes, rests, and dynamic markings such as *f* and *tempo*.



X



Four sets of empty musical staves at the top of the page, each consisting of five lines.

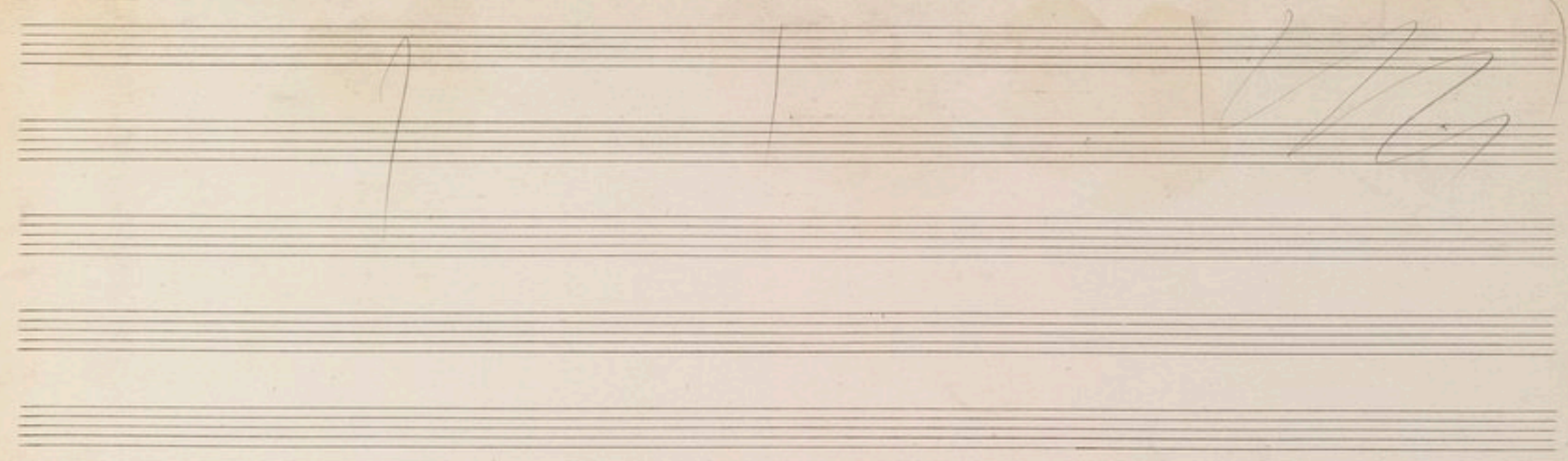
Handwritten musical notation for the first system, consisting of three staves. The top staff contains a melodic line with various note values and rests. The middle staff contains a complex accompaniment with many beamed notes and accidentals. The bottom staff contains a simpler accompaniment with fewer notes.

Handwritten musical notation with lyrics for the second system, consisting of three staves. The lyrics are written below the notes. A piano (*p*) dynamic marking is present at the end of the system.

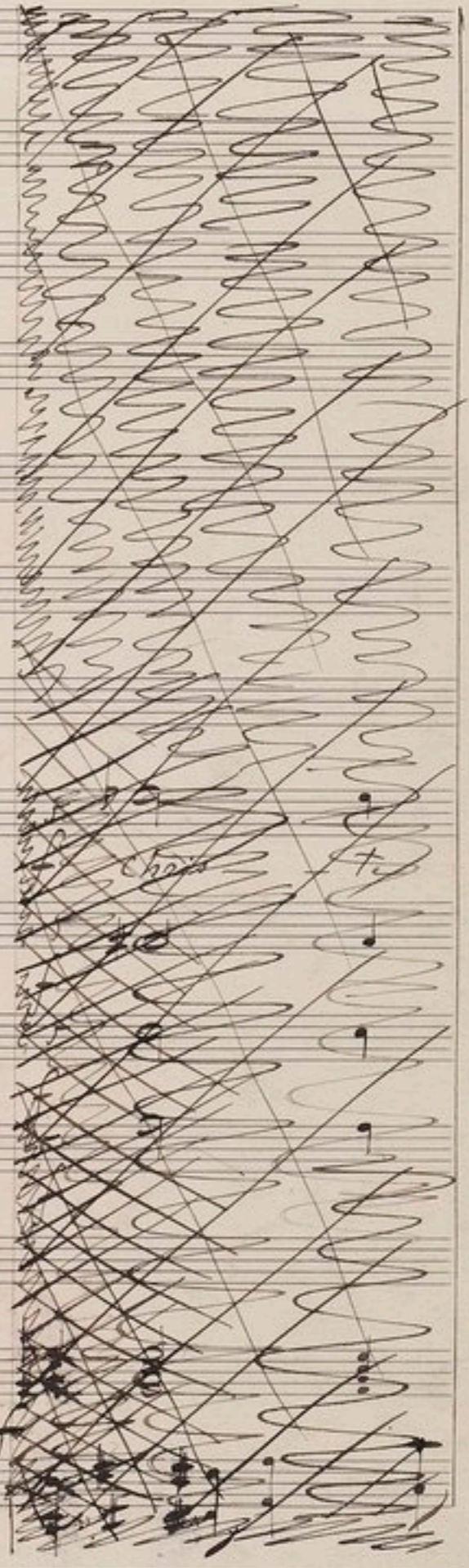
Ky-ri-e Ky-ri-e e-lei-son Ky-ri-e e-
Ky-ri-e Ky-ri-e e-lei-don Ky-ri-e e-

Handwritten musical notation for the third system, consisting of two staves. The notation continues the melodic and accompanimental lines from the previous system.

Four sets of empty musical staves at the bottom of the page, each consisting of five lines.



Handwritten musical score for voice and piano. The score consists of several systems of staves. The vocal line includes the lyrics: "le - i - son a - le - i - son a - le - i - son" and "le - i - son a - le - i - son a - le - i - son". The piano accompaniment features chords and melodic lines. The notation includes various note values, rests, and dynamic markings.



X

Handwritten musical notation for the first system, including a treble clef, a key signature of one sharp (F#), and dynamic markings like 'pp' and 'p'.

Two empty musical staves.

Handwritten musical notation for the second system, featuring a grand staff with piano and forte dynamics.

Handwritten musical notation for the third system, including vocal lines with lyrics and piano accompaniment.

Chris - te, Chris - te, Chris - te, e - le - i - son

Chris - te, Chris - te, Chris - te, e - le - i - son

Handwritten musical notation for the fourth system, primarily piano accompaniment.

Two empty musical staves at the bottom of the page.

Handwritten musical notation for the first system, featuring piano accompaniment and vocal lines. The piano part includes a *col 1^o* marking and dynamic markings of *pp*.

Handwritten musical notation for the second system, including lyrics for the vocal parts. The lyrics are: "chris - ta", "Chris - ta", "E - le - i - son", "chris - - ta", "chris - ta", "E - le - i - son", "chris - - ta", "Chris - - ta".

Handwritten musical notation for the third system, primarily piano accompaniment. It includes a *molto* marking and dynamic markings of *pp*.



Empty musical staves at the top of the page.

Handwritten musical score with vocal lines and piano accompaniment. The score includes notes, rests, and dynamic markings such as *pp*. The lyrics "Ky - ri - e" are written under the vocal lines.



♩ #+

Handwritten musical notation on a single staff. It begins with a treble clef and a key signature of one flat. The notation includes several notes with stems, some beamed together. Dynamic markings include a piano (*p*) and mezzo-forte (*mf*) marking. There are also some slurs and a large handwritten 'X' in the top left corner of the page.

Handwritten musical notation on three staves. The top staff has a treble clef and contains a melodic line with various notes and rests. The middle and bottom staves appear to be accompaniment. Dynamic markings include *pp* (pianissimo) and *ppp* (pianississimo). There are also some slurs and phrasing marks.



Handwritten musical notation on four staves. The notes are aligned with the lyrics "E - le - i - son" written below them. The notation includes various note values and rests. Dynamic markings include *pp* and *ppp*.

Handwritten musical notation on two staves. The notation continues the piece with various notes, rests, and dynamic markings. There are also some slurs and phrasing marks.

Come

Handwritten musical notation on a single staff, showing a few notes and rests.

A system of handwritten musical notation for a vocal piece, including vocal lines and piano accompaniment. The system consists of several staves. The top staff is the vocal line, with lyrics written below it. The lower staves are for piano accompaniment, showing chords and melodic lines. The lyrics are: "e - le - i - son", "e - le - i - son", and "om - nia".



A series of 20 horizontal musical staves, each consisting of five lines, arranged vertically across the page. The staves are evenly spaced and occupy most of the page's width and height.



