

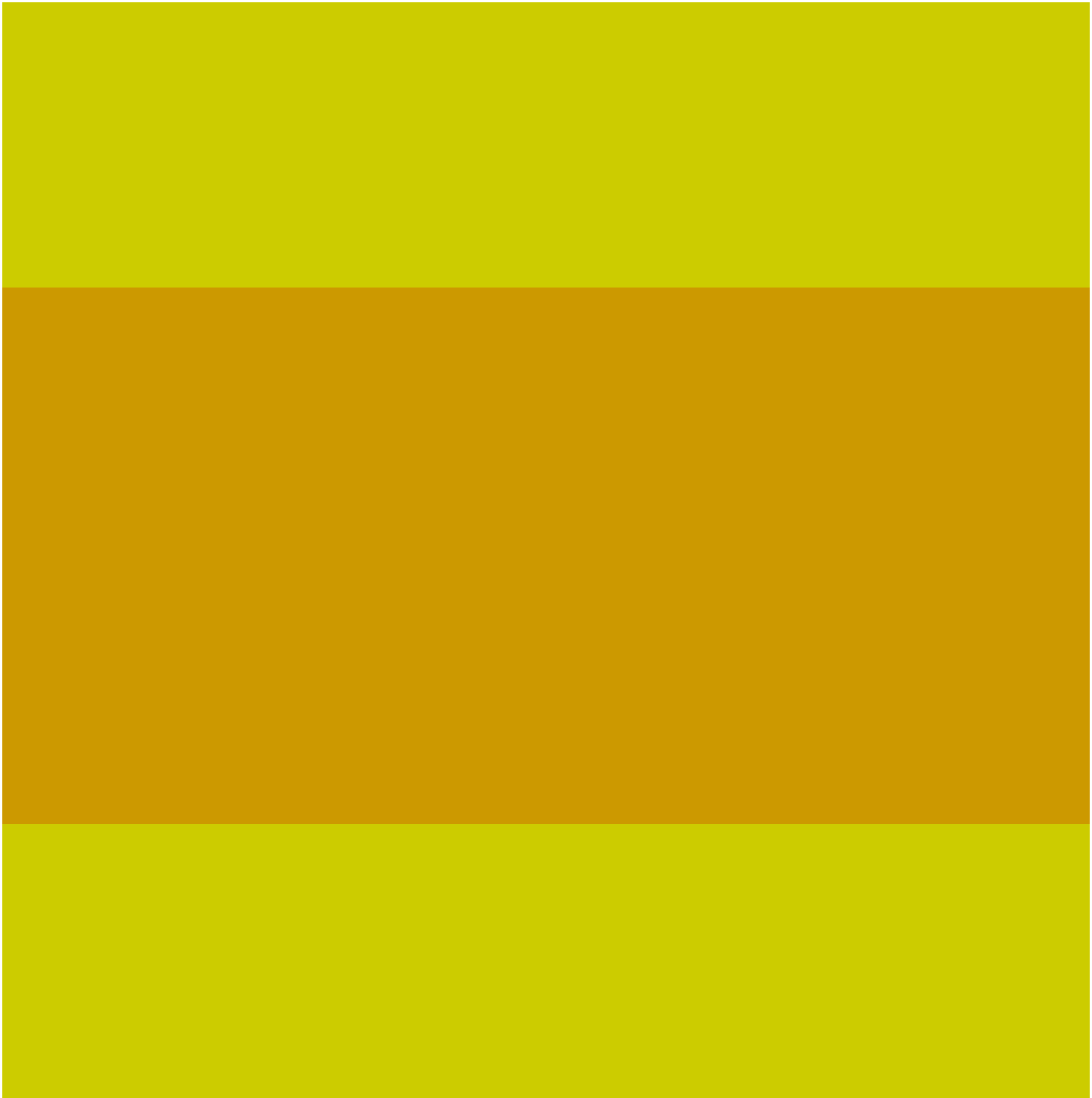
Charles Louis Hanon

Daily Warm-up

Simplified chart for Harp

for Harp
Edited by Isida Kazue Rockzaemon





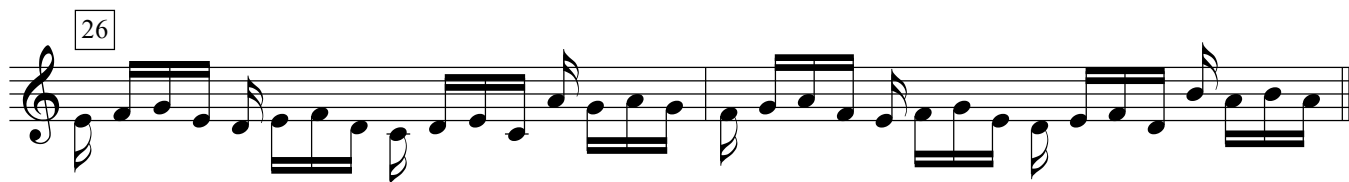
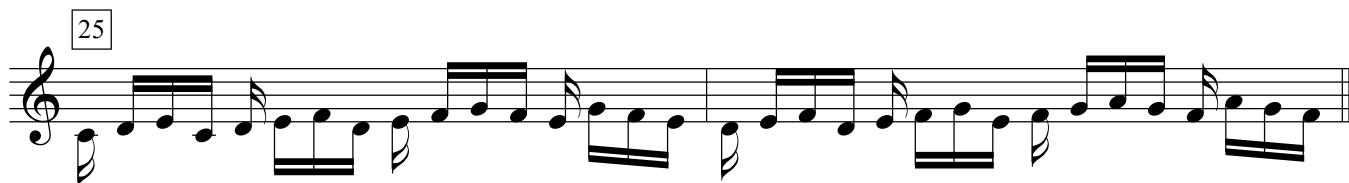
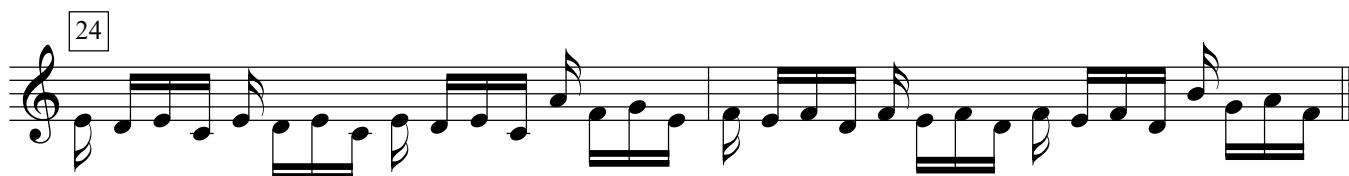
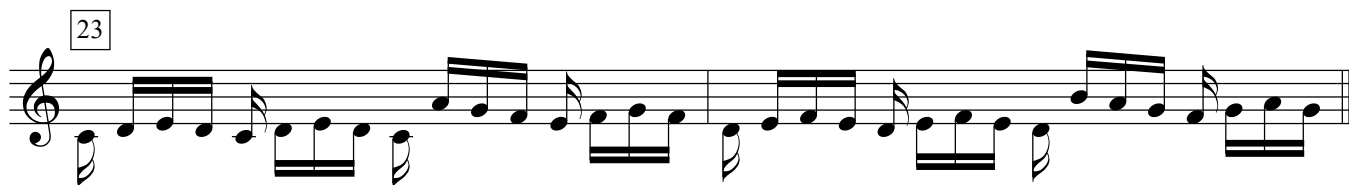
Etudes Basic pattern

The image displays seven staves of musical notation, numbered 1 through 7, arranged vertically. Each staff begins with a treble clef and a 2/4 time signature. The notation consists of eighth and sixteenth notes, often beamed together in groups of four. The pattern is a simplified version of Hanon's exercises, designed for harp. Each staff contains two measures of music, separated by a double bar line. The notes are primarily in the middle range of the harp, with some higher notes in the final measure of each staff. The overall structure is a repetitive exercise of ascending and descending eighth-note patterns.

This image displays a simplified musical chart for Harp, consisting of nine staves numbered 8 through 16. Each staff contains a sequence of musical notes and rests, primarily using eighth and sixteenth notes. The notation is simplified, with many notes beamed together in groups. Each staff begins with a treble clef and a key signature of one flat (B-flat). The music is organized into measures, with some measures containing double bar lines. The overall pattern suggests a continuous melodic or harmonic exercise.

Measures 17, 18, 19, and 20 are presented as four separate systems, each on a single staff. Each system begins with a measure number in a box (17, 18, 19, 20) and contains two measures of music. The notation consists of eighth and sixteenth notes, often beamed together, with a consistent rhythmic pattern across the measures.

Measures 21 and 22 are presented as two systems, each on a single staff. Measure 21 is the first system, and measure 22 is the second system. Each system contains two measures of music, continuing the rhythmic pattern of eighth and sixteenth notes.



27

Exercise 27 consists of two measures. The first measure contains a treble staff with a melody of eighth and sixteenth notes, and a bass staff with a supporting line of eighth and sixteenth notes. The second measure continues the pattern with similar rhythmic values and melodic lines.

28

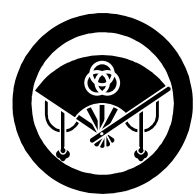
Exercise 28 consists of two measures. The first measure contains a treble staff with a melody of eighth and sixteenth notes, and a bass staff with a supporting line of eighth and sixteenth notes. The second measure continues the pattern with similar rhythmic values and melodic lines.

29

Exercise 29 consists of two measures. The first measure contains a treble staff with a melody of eighth and sixteenth notes, and a bass staff with a supporting line of eighth and sixteenth notes. The second measure continues the pattern with similar rhythmic values and melodic lines.

30

Exercise 30 consists of two measures. The first measure contains a treble staff with a melody of eighth and sixteenth notes, and a bass staff with a supporting line of eighth and sixteenth notes. The second measure continues the pattern with similar rhythmic values and melodic lines.





This edition © 2019 by Rockza Music Edition

First published in 21-Apr/2019

Isida Kazue Rockzaemon

Shitajuku 1-1-11-105, Kiyose, Tokyo, Japan 〒204-0001

grokyu@gmail.com

<http://rockza.web.fc2.com/>

This is royalty free music. There is no obligation to get permission to perform this music, but you need to purchase this music to perform it. Also, please be sure to put the names of the composer and arranger on the program, or on any material related to the performance.

If you want to copy the music for use other than your personal use, you need to get prior permission from us.

本作品の演奏に際し作品使用許諾や使用料は必要ありませんが、演奏には個々の演奏者が本楽譜を取得の上で使用し、演目・告知資料などには必ず作曲者名や編曲者名を明記してください。

また個人的な使用目的以外での複写転載に際しては、本楽譜制作者の許諾が必要となります。

東京都清瀬市下宿1-1-11-105
露久左庵音楽出版 石田十兄

Charles Louis Hanon - Daily Warm-up Simplified chart for Harp



露久左庵音樂出版
Rockza Music Edition