

Orchestra 1  
Solo Violoncello

Louis Spohr  
(1784-1859)

Symphony No.7  
Op. 121

# I. Kinderwelt

Louis Spohr  
(1784-1859)

## Introduzione. Adagio $\text{♩}=108$

1 *pizz.* *p* **2** *arco* *p* **2**

9 *p* *cresc.* *mf* *dim.*

## 14 poco rit. Allegretto $\text{♩}=138$

14 *pp* *cresc.* *f*

23 *dim.* **4** *pizz.* *p* *arco* *pp*

35 *cresc.* *f* *dim.* *p*

44 **A** *pizz.* *p*

56 *p* *arco* *arco* *pizz.*

66 *arco* *cresc.* *f* *pizz.* **B**

74 *p*

81 *arco*  
*p* *cresc.*

90 *tr.*  
*dim. cresc. dim.*

97 *p* *f* *fp*

107 **C**  
*cresc.* *f*<sup>3</sup>

116

124 *pizz.* *p* *pp* *arco* *p*  
 1. *arco* 2. *arco*

134 *cresc.* *f* *p* *pizz.*

144 *arco.* *pp* *cresc.*

154 **D** *pizz.* *f*  
 Solo Ob.

169 *arco* *pp* *cresc.* *f*

176 *dim.* **4**

185 *pizz.* *arco*  
*p* *pp* *cresc.* *f*

196 *pizz.*  
*pp* *p*

206 *arco* *pizz.*  
*p* *f*

216 **E** *pizz.*  
*p*

227 *arco*  
*p*

237 *p* *cresc.*

247 *fp* *cresc.*

257 **F** *f*<sup>3</sup> 3 3 3 3

263 3 3 3 3 3 3 3 3

269 *pizz.* **2**  
*p*

278 *arco*  
*p* *pp* *pp*



## II. Zeit der Leidenschaften

1 **Larghetto** (♩=96)  
8 Solo Cl.

14 *mf sfz p* *pizz.* *(pp)*

18

21 *cresc.*

24 *mf dim. p* *arco* *p*

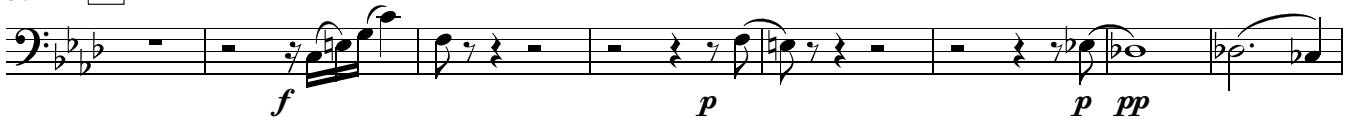
27 *p* *pizz.*

31 *arco* *p*

35 *p* **poco a poco stringendo**

39 **Allegro moderato** (♩=120) *cresc.* *f* *>* *p*

44 *p* *p* *tiré* *(p)* *cresc.*

50 **A**

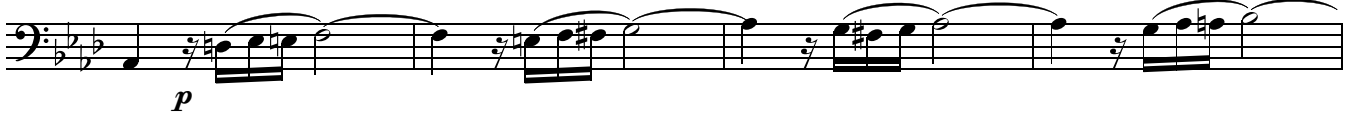
58



63



67

71 **B**

76



82

91 **C**

100



105



111 **D**

118

125

131 **E**

139

147

152

156

162

167 **F**

172

179

*p*

*f*

*p*<sup>3</sup>

*f*

*p*

*f*<sup>3</sup>

*p*

*f*

*cresc.*

*f*

*p*

*p*

*p*

*tiré*

*(p)* *cresc.* *f*

*p*



186

195

204

212

218

226

234

240

247

255

263

268

## III. Endlicher Sieg des Göttlichen

1 **Presto**  $\text{♩} = 96$

Vln. 1

5 *pizz.* **4**

*f*

12 **2**

*f* *f*

18 **A** **8**

*f* *dim.* *p*

31 Orch. 2 Tutti

36 Solo Fl. *(pizz.)* *f* *dim.*

42 **9** Fls/Vln. 1

*p*

54 *(pizz.)* *f*

60 *p* *mf* *dim.*

67 **B** Cl. 1

*p*

70 **6**

78 **15** Fl.1/Vln.1

97 **C** arco *f* (dim.) (*p*)

105

111

119

126 *cresc.* *mf* *dim.*

133 *p*

140 **D** **3** Fl.1/Vln.1

147 *f* *dim.* *sfz*

150 *dim.* *p* **3**

157 Fl.1/Vln.1 Solo Ob.

162

168 sfz dim. 12 Vc./Cb.

184 Fl.1/Ob.1

189 pizz. f 4 2

199 F f dim.

203 p

207 arco f tr

213 tr

219

223

227 **G**

Musical staff for measure 227, marked **G**. The staff contains a melodic line starting with a half note G2, followed by quarter notes A2, B2, and C3, then a half note D3, and finally a half note E3. Dynamics include *dim.* and *p*.

234

Musical staff for measure 234, continuing the melodic line from the previous measure.

241

Musical staff for measure 241, consisting of a series of half notes: G2, A2, B2, C3, D3, E3, F3, G3, A3, B3, C4.

251

Musical staff for measure 251, featuring a melodic line with dynamics *cresc.*, *f*, and *dim.*

259

Musical staff for measure 259, starting with a half note G2 and followed by a series of quarter notes: A2, B2, C3, D3, E3, F3, G3, A3, B3, C4. Dynamics include *p*.

265 **H**

Musical staff for measure 265, marked **H**. It features a double bar line with the number 17 above it, indicating a section change. The staff then continues with a melodic line. Dynamics include *f* and *dim.*. A *Vln. 1* marking is present above the staff.

286

Musical staff for measure 286, marked *pizz.*. It features a series of quarter notes: G2, A2, B2, C3, D3, E3, F3, G3, A3, B3, C4. Dynamics include *f*, *dim.*, and *p*.

292

Musical staff for measure 292, marked *arco*. It features a melodic line with dynamics *f*, *sfz*, *dim.*, *sfz*, *dim.*, *sfz*, *dim.*, and *p*.

299

Musical staff for measure 299, marked *Solo Fl.*. It features a melodic line with dynamics *f* and *dim.*

304

Musical staff for measure 304, marked *pp*. It features a melodic line with dynamics *pp* and a double bar line with the number 2 above it, indicating a section change. The staff ends with a treble clef, a 12/8 time signature, and a repeat sign.

## 310 Adagio (♩=132)

Vln. 1

*ff* *dim.*

Vln. 1

*pizz.*  
*p*

320

I

325 arco

*p* *cresc.* *f* *ff* *dim.*

330

3

*pizz.*

*(p)*

337

*f*

340

arco

*p* *pp*

343 Fl. 1

*ff* *dim.*

Vln. 1

*pizz.*

349

*(p)*

354

arco

*f* *dim.* *pp*