

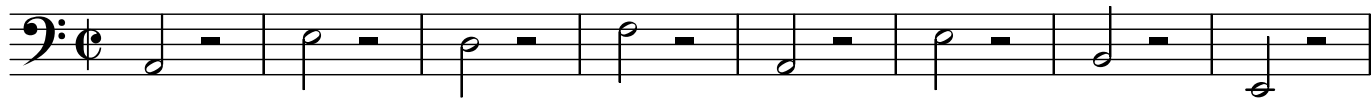
# DEUTSCHE MESSE von Michael Stenov

## KYRIE I - andante

## KONTRABASS



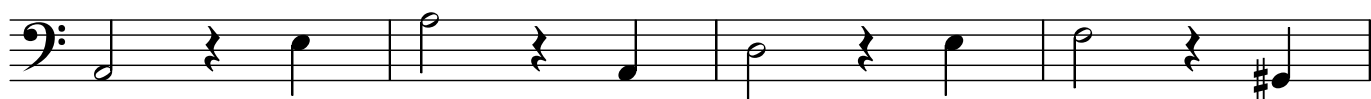
## 7 CHRISTE - più mosso



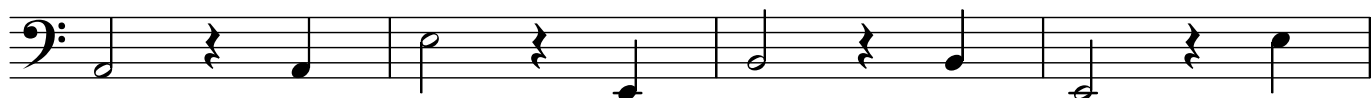
15



23



27



31



35



39



43



47



## 51 KYRIE II - Tempo I

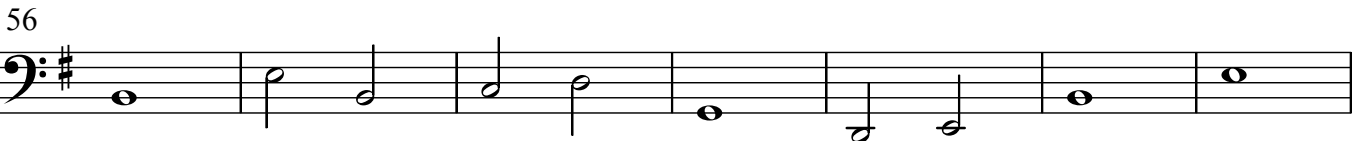
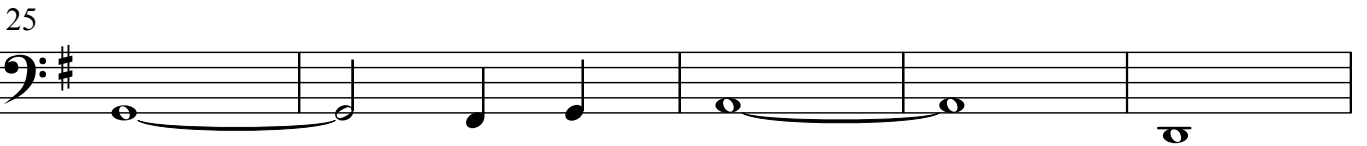
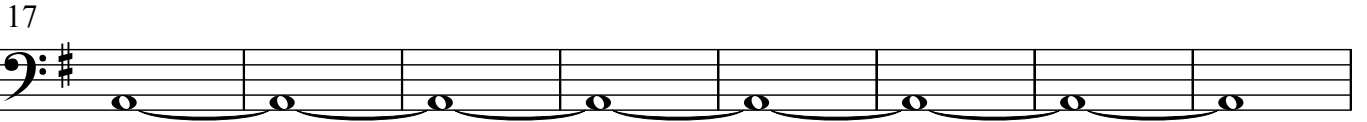


55



## GLORIA - Allegretto

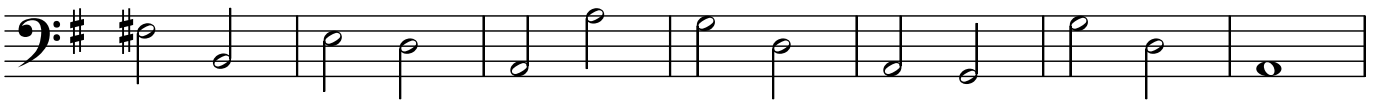
## KONTRABASS



69 **meno mosso**



85



92



100

107 **a tempo**

114



120



129



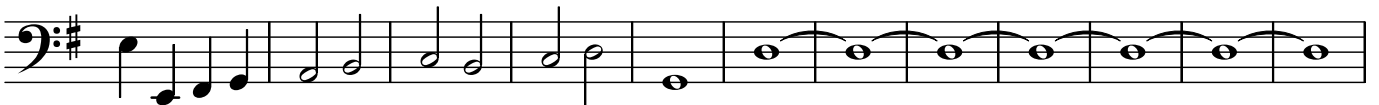
136



143



149

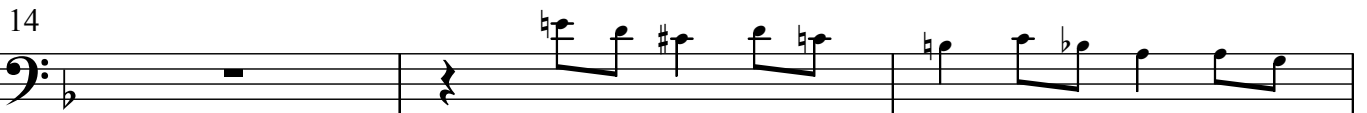


161



## CREDO - Andante

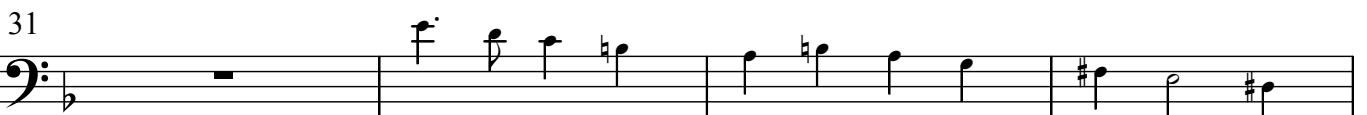
## KONTRABASS



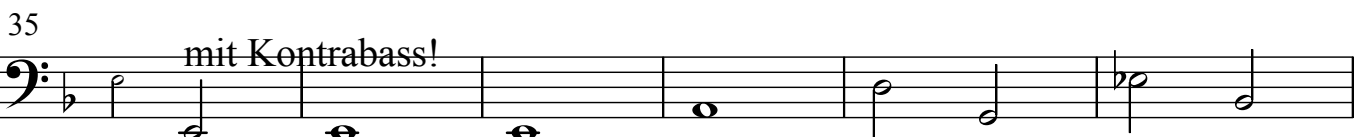
ohne Kontrabass!



mit Kontrabass!



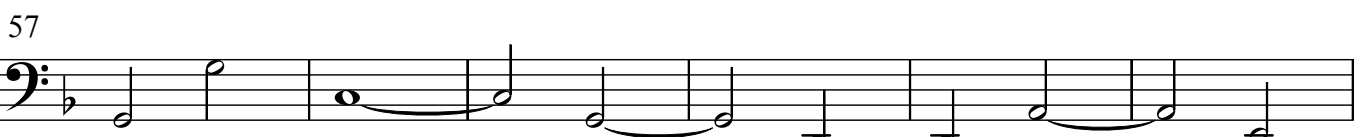
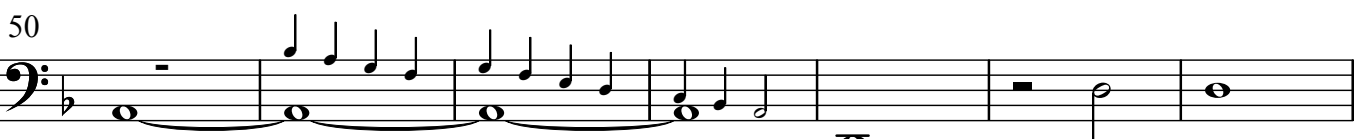
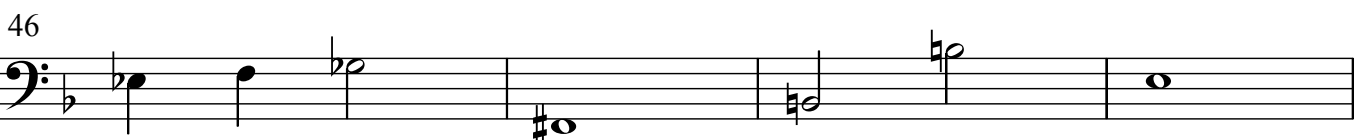
ohne Kontrabass!



mit Kontrabass!



meno mosso



63

70 *allegretto*

75

79

84

92

97

101

105

109

115

ohne Kontrabass!

mit Kontrabass!

122

127

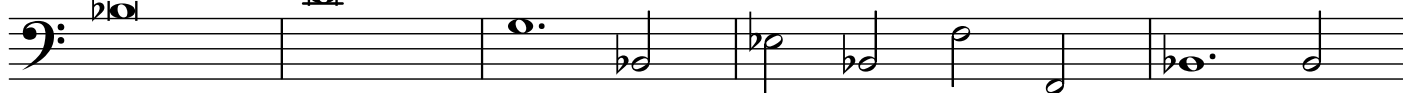
Detailed description: This is a page of musical notation for a bass clef instrument. The page is numbered '5' at the top. It contains 12 staves of music, each starting with a measure number. The key signature has one flat (B-flat). The first staff (63) features a series of eighth notes with a slur underneath. The second staff (70) is marked 'allegretto' and shows a change in rhythm with sixteenth notes. The third staff (75) continues with eighth notes. The fourth staff (79) has some rests. The fifth staff (84) has a double bar line. The sixth staff (92) continues the eighth-note pattern. The seventh staff (97) continues the eighth-note pattern. The eighth staff (101) has a slur over two measures. The ninth staff (105) continues the eighth-note pattern. The tenth staff (109) continues the eighth-note pattern. The eleventh staff (115) has a double bar line and a note marked 'f'. The twelfth staff (122) has a double bar line and a note marked 'f'. The final staff (127) has a double bar line.

**SANCTUS - andante**

9



15



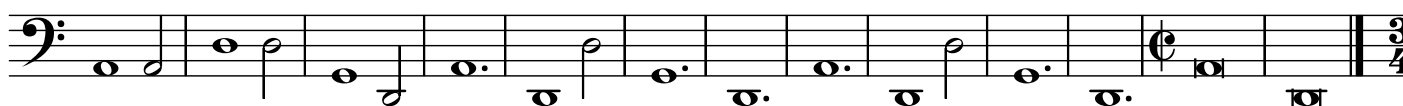
20



26

**HOSANNA I**

37



50

**BENEDICTUS - Allegretto**

64



77



90



103



117

**HOSANNA II**

128



## AGNUS DEI - andante

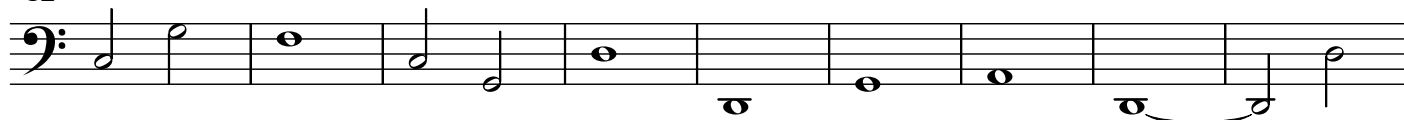
## KONTRABASS



6



12



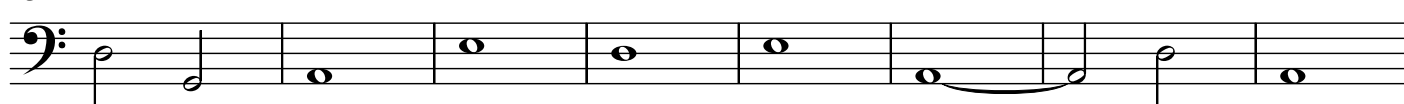
21



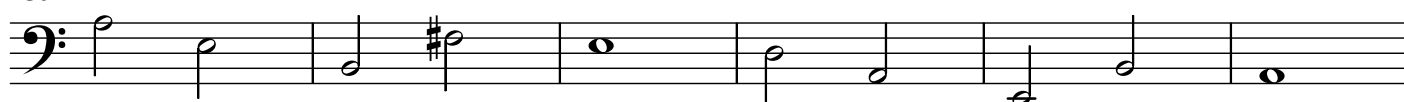
26



31



39



45



51

**meno mosso**

55

