

Sonata 2. a 2 Clav: et Pedal.

Handwritten musical notation for measures 1-4. The score consists of three staves. The top staff is in treble clef, the middle in alto clef, and the bottom in bass clef. The music is in 6/8 time and features a complex melodic line with many sixteenth and thirty-second notes, including trills and grace notes.

5

Handwritten musical notation for measures 5-8. The notation continues on three staves, maintaining the same complex melodic and rhythmic patterns as the previous section.

9

Handwritten musical notation for measures 9-12. The notation continues on three staves, showing further development of the melodic and harmonic material.

12a

Handwritten musical notation for measures 12a-15. The notation continues on three staves, concluding the page with a final melodic flourish.



16

Handwritten musical notation for measures 16-19. The system consists of three staves: a treble clef staff (top), an alto clef staff (middle), and a bass clef staff (bottom). The music is written in a historical style with various note values, rests, and bar lines. The paper shows signs of age and staining.

20

Handwritten musical notation for measures 20-22. The system consists of three staves: a treble clef staff (top), an alto clef staff (middle), and a bass clef staff (bottom). The notation includes complex rhythmic patterns and rests. There is a prominent water stain on the right side of the page.

23a

Handwritten musical notation for measures 23-25. The system consists of three staves: a treble clef staff (top), an alto clef staff (middle), and a bass clef staff (bottom). The music features intricate melodic lines and rests. A large water stain is visible on the right side of the page.

26a

Handwritten musical notation for measures 26-28. The system consists of three staves: a treble clef staff (top), an alto clef staff (middle), and a bass clef staff (bottom). The notation includes various note values and rests. A large water stain is visible on the right side of the page.



30

Handwritten musical notation for system 30, consisting of three staves. The notation is in a historical style, featuring various note values, rests, and clefs. The paper shows signs of age and wear.

34a

Handwritten musical notation for system 34a, consisting of three staves. The notation continues with complex rhythmic patterns and melodic lines.

37a

Handwritten musical notation for system 37a, consisting of three staves. The notation includes various musical symbols and rests.

41a

Handwritten musical notation for system 41a, consisting of three staves. The notation features a mix of note values and rests.



44a

Handwritten musical notation for system 44a, consisting of three staves. The top staff uses a treble clef, the middle a treble clef, and the bottom a bass clef. The key signature has two flats (B-flat and E-flat), and the time signature is 3/4. The notation includes various note values, rests, and bar lines.

48a

Handwritten musical notation for system 48a, consisting of three staves. The top staff uses a treble clef, the middle a treble clef, and the bottom a bass clef. The key signature has two flats (B-flat and E-flat), and the time signature is 3/4. The notation includes various note values, rests, and bar lines.

52a

Handwritten musical notation for system 52a, consisting of three staves. The top staff uses a treble clef, the middle a treble clef, and the bottom a bass clef. The key signature has two flats (B-flat and E-flat), and the time signature is 3/4. The notation includes various note values, rests, and bar lines.

56

Handwritten musical notation for system 56, consisting of three staves. The top staff uses a treble clef, the middle a treble clef, and the bottom a bass clef. The key signature has two flats (B-flat and E-flat), and the time signature is 3/4. The notation includes various note values, rests, and bar lines.



59a

Handwritten musical notation for system 59a, consisting of three staves. The notation includes various note values, rests, and bar lines, typical of a handwritten manuscript.

62a

Handwritten musical notation for system 62a, consisting of three staves. The notation includes various note values, rests, and bar lines, typical of a handwritten manuscript.

65a

Handwritten musical notation for system 65a, consisting of three staves. The notation includes various note values, rests, and bar lines, typical of a handwritten manuscript.

69

Handwritten musical notation for system 69, consisting of three staves. The notation includes various note values, rests, and bar lines, typical of a handwritten manuscript.



73

Handwritten musical notation for measures 73-76. The system consists of three staves. The top staff features a melodic line with eighth and sixteenth notes. The middle staff contains a more active melodic line with frequent sixteenth-note passages. The bottom staff provides a bass line with eighth notes and rests.

77

Handwritten musical notation for measures 77-80. The system consists of three staves. The top staff has a melodic line with a fermata over the final note. The middle staff contains a complex melodic line with many sixteenth notes. The bottom staff has a bass line with eighth notes. The word "Largo" is written in cursive in the right margin.

5a

Handwritten musical notation for measures 5a-5d. The system consists of three staves. The top staff has a melodic line with eighth notes and a fermata. The middle staff contains a complex melodic line with many sixteenth notes. The bottom staff has a bass line with eighth notes.



10a

Handwritten musical notation for system 10a, consisting of three staves. The top staff features a complex melodic line with many sixteenth and thirty-second notes, including slurs and ornaments. The middle staff continues the melodic line with similar rhythmic complexity. The bottom staff provides a bass line with mostly quarter and eighth notes.

15a

Handwritten musical notation for system 15a, consisting of three staves. The top staff has a melodic line with frequent sixteenth-note runs and slurs. The middle staff continues the melodic development. The bottom staff is a bass line with a steady eighth-note accompaniment.

20a

Handwritten musical notation for system 20a, consisting of three staves. The top staff shows a melodic line with many sixteenth-note passages. The middle staff continues the melodic line. The bottom staff is a bass line with a mix of quarter and eighth notes.

25a

Handwritten musical notation for system 25a, consisting of three staves. The top staff features a melodic line with sixteenth-note runs and slurs. The middle staff continues the melodic line. The bottom staff is a bass line with a steady eighth-note accompaniment.



30

Handwritten musical notation for system 30, consisting of three staves. The top staff begins with a treble clef and a key signature of two flats. The middle and bottom staves use different clefs, likely alto and bass clefs. The notation includes various note values, rests, and dynamic markings.

34a

Handwritten musical notation for system 34a, consisting of three staves. The notation is dense with many sixteenth and thirty-second notes, indicating a fast or intricate passage. It features treble, alto, and bass clefs.

39a

Handwritten musical notation for system 39a, consisting of three staves. This system shows a mix of rhythmic patterns, including some longer note values and rests, interspersed with more active passages. It uses treble, alto, and bass clefs.

44a

Handwritten musical notation for system 44a, consisting of three staves. The notation includes some complex rhythmic figures and rests, with a mix of note values. It features treble, alto, and bass clefs.

Al



Allegro.

Handwritten musical notation for measures 1-8. The first system consists of three staves. The top staff contains a melodic line with various note values and rests. The middle staff is mostly empty with some initial notes. The bottom staff contains a rhythmic accompaniment with repeated eighth notes.

9

Handwritten musical notation for measures 9-15. The first system consists of three staves. The top staff continues the melodic line. The middle staff has more active notation. The bottom staff continues the rhythmic accompaniment.

16

Handwritten musical notation for measures 16-22. The first system consists of three staves. The top staff features a more complex melodic line with slurs. The middle staff is very active with many notes. The bottom staff continues the accompaniment.

23a

Handwritten musical notation for measures 23-29. The first system consists of three staves. The top staff has a melodic line with some rests. The middle staff is very active with many notes. The bottom staff continues the accompaniment.



31

Handwritten musical notation for measures 31-37. The system consists of three staves. The top staff is in treble clef, the middle in alto clef, and the bottom in bass clef. The music is written in a historical style with various note values and rests.

38

Handwritten musical notation for measures 38-44. The system consists of three staves. The top staff is in treble clef, the middle in alto clef, and the bottom in bass clef. The music continues with similar notation to the previous system.

45

Handwritten musical notation for measures 45-51. The system consists of three staves. The top staff is in treble clef, the middle in alto clef, and the bottom in bass clef. The notation includes various rhythmic patterns and rests.

52

Handwritten musical notation for measures 52-58. The system consists of three staves. The top staff is in treble clef, the middle in alto clef, and the bottom in bass clef. The music concludes with various note values and rests.



58a

Handwritten musical notation for system 58a, consisting of three staves. The top staff features a complex melodic line with many sixteenth and thirty-second notes. The middle and bottom staves provide harmonic accompaniment with simpler rhythmic patterns.

64a

Handwritten musical notation for system 64a, consisting of three staves. The notation is dense with many beamed notes, particularly in the upper staves, suggesting a fast or intricate passage.

69a

Handwritten musical notation for system 69a, consisting of three staves. This system shows a continuation of the complex melodic and rhythmic patterns seen in the previous systems.

75

Handwritten musical notation for system 75, consisting of three staves. The notation continues with similar complexity and density as the preceding systems.



82

Handwritten musical notation for measures 82-87. The system consists of three staves. The top staff features a melodic line with various note values and rests. The middle staff contains a more active melodic line with frequent sixteenth-note passages. The bottom staff provides a harmonic accompaniment with longer note values and rests.

88a

Handwritten musical notation for measures 88a-95. The system consists of three staves. The top staff continues the melodic development with some slurs. The middle staff shows a rhythmic pattern with many sixteenth notes. The bottom staff continues the accompaniment with a steady flow of notes.

96

Handwritten musical notation for measures 96-102. The system consists of three staves. The top staff has a melodic line with some rests and slurs. The middle staff features a more complex rhythmic pattern with many sixteenth notes. The bottom staff continues the accompaniment with a steady flow of notes.

103

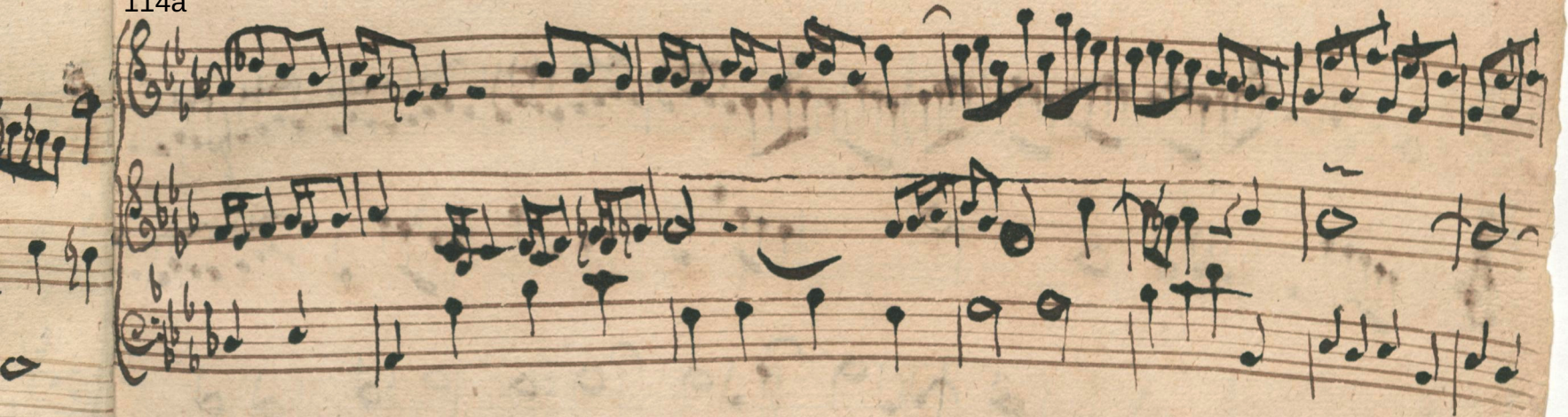
Handwritten musical notation for measures 103-109. The system consists of three staves. The top staff begins with a whole rest followed by a melodic line. The middle staff continues the melodic development with slurs. The bottom staff provides the accompaniment with a steady flow of notes.



109



114a



120a



127a





24

135

Handwritten musical notation for measures 135-141. The system consists of three staves. The top staff is in treble clef, the middle in alto clef, and the bottom in bass clef. The music is in 6/8 time and features a complex melodic line with many sixteenth and thirty-second notes, and a bass line with quarter and eighth notes.

142

Handwritten musical notation for measures 142-149. The system consists of three staves. The top staff is in treble clef, the middle in alto clef, and the bottom in bass clef. The music continues with similar rhythmic complexity, featuring many sixteenth and thirty-second notes.

150a

Handwritten musical notation for measures 150-158. The system consists of three staves. The top staff is in treble clef, the middle in alto clef, and the bottom in bass clef. The music continues with similar rhythmic complexity, featuring many sixteenth and thirty-second notes.

159

Handwritten musical notation for measures 159-168. The system consists of three staves. The top staff is in treble clef, the middle in alto clef, and the bottom in bass clef. The music continues with similar rhythmic complexity, featuring many sixteenth and thirty-second notes.

169

Handwritten musical notation for measures 169-175. The system consists of three staves. The top staff is in treble clef, the middle in alto clef, and the bottom in bass clef. The music concludes with a final cadence. The word "Al Fine" is written in cursive at the bottom right of the page.

Al Fine