

43. 14

23. 9

Sanctus P. P. P. P. P.

The image shows a page of handwritten musical notation on aged paper. It features ten staves of music, each with a key signature of one flat (B-flat) and a time signature of 3/2. The lyrics are written in Latin and are interspersed with the musical notes. The lyrics include: "auda seque ri do mi nus lauda", "se nome Do mi ni sis no me Do mi ni bene", "Dicit ex hoc nae et usque nunc et usque in se cu los", "Laudate que ri Do mi nus laudate nome", "Do mi ni et su per ce los", "glo - ri a eius", "in ce - lo in ce - lo", "et in ter - ra et in ter - ra susci tan", and "a terra in opes et de ster core". The notation includes various rhythmic values such as minims, crotchets, and quavers, along with rests and bar lines. There are some red markings in the top left corner and some small numbers (10, 49, 7, 15, 24) written in red or black ink.

auda seque ri do mi nus lauda

se nome Do mi ni sis no me Do mi ni bene

Dicit ex hoc nae et usque nunc et usque in se cu los

Laudate que ri Do mi nus laudate nome

Do mi ni et su per ce los

glo - ri a eius

in ce - lo in ce - lo

et in ter - ra et in ter - ra susci tan

a terra in opes et de ster core

Handwritten musical score on aged paper, featuring ten staves of music with Latin lyrics. The lyrics are: *erigens pauperes erigens pauperes laudate* (Staff 1), *sepe et in domino laudate nomen domi-* (Staff 2), *ni ut collocet eum principes et prin-* (Staff 3), *cipales laudate pueri domini* (Staff 4), *laudate nomen domini qui habitare* (Staff 5), *faciunt in terra in domo* (Staff 6), *domus filii* (Staff 7), *orum et sanctorum et san-* (Staff 8), *ctorum filiorum filii* (Staff 9). The manuscript includes various musical notations such as clefs, notes, rests, and bar lines. There are some markings like '12' and 'solo' on the staves. The paper shows signs of age, including foxing and staining.

oro le san- te fi li o ro fi li o ro le

ta - - - te le san. - te le san- te le san-

te le san. - te

Quasi

lo ri a pas - - - vi et fi li o

et spi ri tu i san cto si ul - e ras in qui -

ei pi o et nunc et semper et in se cu -

la se cu lo rum a -

me - - - me -

9. a - - -

Handwritten musical notation on two staves. The top staff contains a melodic line with several groups of beamed eighth notes. The bottom staff contains a lower melodic line with fewer notes. The lyrics "mo a" are written under the first staff, and "me" is written under the second staff. The notation is in brown ink on aged, yellowed paper.

Five empty musical staves are visible below the first two. They contain faint, ghostly impressions of musical notes and lines, likely from the reverse side of the page or a previous draft. The paper shows signs of age, including foxing and staining.

2. Cantor 2.^o Choro.

Handwritten musical score for a choir, featuring Latin lyrics and musical notation on staves. The score is written in a cursive hand and includes various musical symbols such as clefs, time signatures, and bar lines. The lyrics are in Latin and describe the praise of God.

Laudate pue ri do mi num
Laudate nome do mi ni Laudate pue
ri do mi num Laudate nome do mi ni
sit nome do mi ni be ne - dictio ex -
hoc nuc et us que nuc et us que in se cu tum
et super celos glo -
ri a e - ius
in ce - lo in ce - lo et
in terra suscitans a terra in opem

Handwritten musical score on aged paper. The score consists of ten staves of music with Latin lyrics written below the notes. The lyrics are: "a terra in op̄ et de seruo re eri", "gens paup̄ et de seruo re eri gens paup̄", "Laudate p̄ e ri Do mi nū laudate no men Do mi", "ni ut collo ces eum cum prin ci pi bus", "ci pi bus laudate p̄ e ri Do mi nū", "Laudate no me Do mi ni qui ha bi ta re", "fa cis se ri te se ri te in do", "mo ma", "no fi li", "o rō le tan se le tan se fi li". The paper shows signs of age, including foxing and some staining. There are some markings above the first staff, including "at." and "12". There are also some markings below the staves, including "12" and "10".

a terra in op̄ et de seruo re eri
gens paup̄ et de seruo re eri gens paup̄
Laudate p̄ e ri Do mi nū laudate no men Do mi
ni ut collo ces eum cum prin ci pi bus
ci pi bus laudate p̄ e ri Do mi nū
Laudate no me Do mi ni qui ha bi ta re
fa cis se ri te se ri te in do
mo ma
no fi li
o rō le tan se le tan se fi li

o ro te san - - - sem fi li - o ro

te san te o - fi - li - o ro te san -

te san te te san - - - te san te

Quasi

lo ri a pa tri et fi - li o et spi -

ri tui

ri us

e vas in prin ci pi o et nunc et semper

et in se cu la se cu la a -

me

9.

mō a - mō a.

mō

Tenore P.^o Chor



audate laudate pueri Domini laudate



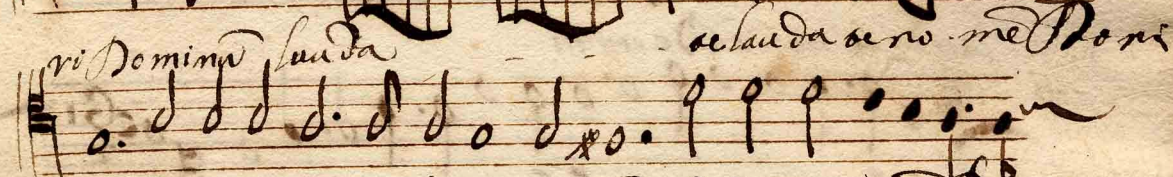
se laudate nomen Domini laudate pueri



Domini laudate nomen Domini laudate laudate pueri



se laudate nomen Domini laudate laudate pueri



Domini laudate pueri Domini laudate nomen Domini



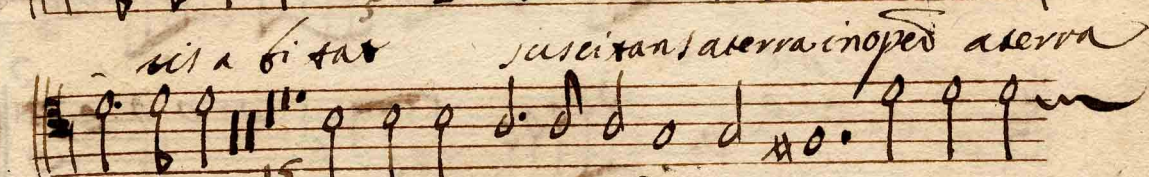
Quis ut dominus deus noster quis in



al-ri habitat quis in al-ri habitat



suscitans a terra inopes a terra



inopes laudate pueri Domini laudate

7

no mē Domini ut colles eum cū principi bus ^{13.} ⁷

cū principi bus popu li su - i cū principi bus

pu li su - i laudate que ri Domini

Qui habitare facit

Sicut laudate nome Domini

So ni a pa tri et fi li o et spi ri ta i san cto

sicut erat in princi pio et na cetur per et in se cu la

et in se cu la se cu lo no a - - - - - me a - - - - -

me a

me a - - - - - me //

Basso C. a io

Handwritten musical score for Bass C. a io, featuring ten staves of music with Latin lyrics and various musical notations. The score is written in a historical style with a treble clef and a 3/2 time signature. The lyrics are in Latin, and the music includes various note values, rests, and dynamic markings.

1. *laudate pueri dominum laudate*

2. *no me Domini laudate pueri domini*

3. *laudate no me Domini ex cel. . . sus*

4. *super omnes gentes dominus et hu mili.*

5. *as respiciat res pi -*

6. *cit suscitans a terra in opem a terra*

7. *in opem laudate pueri dominum laudate*

8. *no me Domini cum principi bus po*

9. *puerum populi sui po*

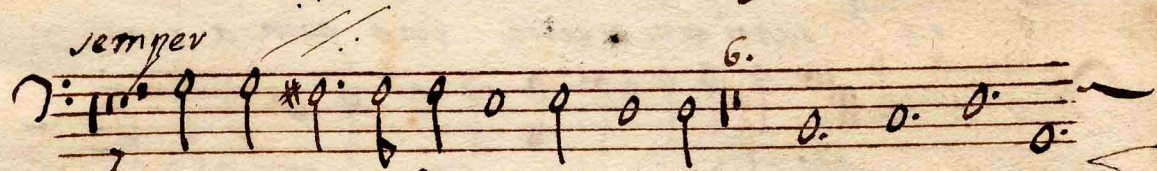


pu li su i laudate que
ri do mi num laudate no me do mi ni

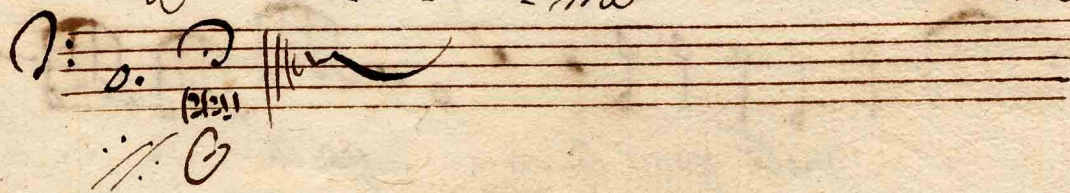
Qui tra hixare facit



sane - to sicut erat in principio et nunc et
semper



et in secula se cu loru a - - - me
a - - - mo a - - - me



Canto 2. Cho. F

Handwritten musical notation on a five-line staff. The key signature is one flat (B-flat) and the time signature is 3/2. The melody begins with a large initial letter 'L'.

audate pueri Do mi nū

Handwritten musical notation on a five-line staff, continuing the melody from the previous line.

Sau date no mē Do mi ni Lau date pue ri -

Handwritten musical notation on a five-line staff, continuing the melody.

Do mi nū Lau date no mē Do mi ni

Handwritten musical notation on a five-line staff, continuing the melody.

Handwritten musical notation on a five-line staff, continuing the melody.

sus ci tan a terra

Handwritten musical notation on a five-line staff, continuing the melody.

ino pem Lau date pue ri Do mi nū Lau da -

Handwritten musical notation on a five-line staff, continuing the melody.

te no mē Do mi ni Lau date pue ri Do mi -

Handwritten musical notation on a five-line staff, continuing the melody.

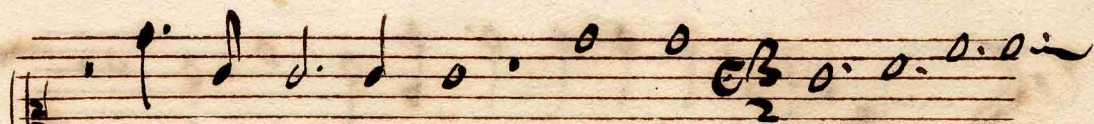
nū Lau date no mē Do mi ni

Handwritten musical notation on a five-line staff, continuing the melody.

Qui ha bitare. Caecis
47 pause

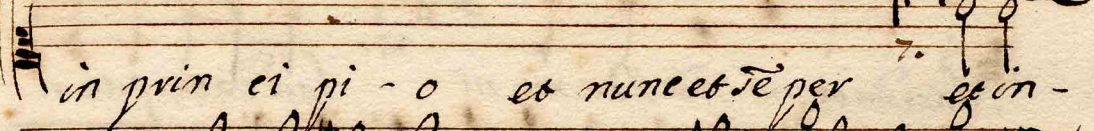
Handwritten musical notation on a five-line staff, continuing the melody.

Glo ri a pa - - tri et fi li o



et spi ri tu - i san cto si cut eras

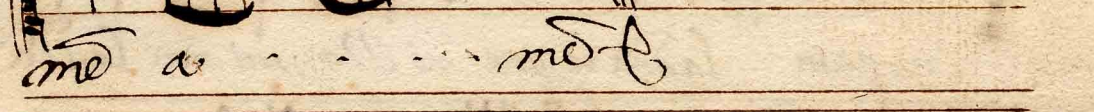
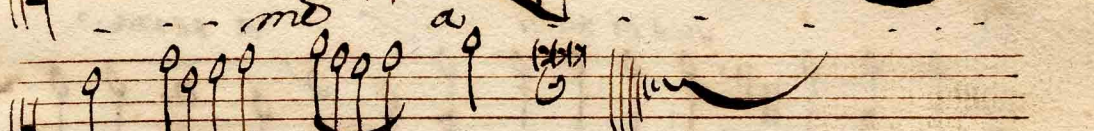
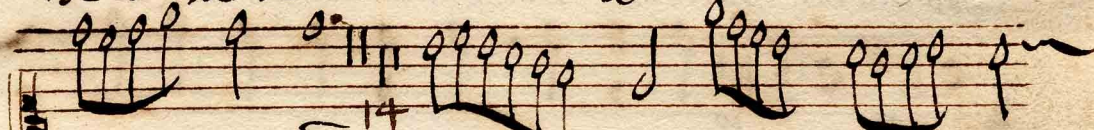
o . o . o . o . o . o . o . o .



in prin ci pi - o et nunc et se per et in -



se u la se u lo rdo



Alto 2. a' io

7

au dare pu e ri Domi nū

Lau de te no mē Do mi ni

Lau da se pu e ri Domi nū

Lau da te no mē Do mi ni

A solis ortu usque ad occa su lau-

da bi le no mē Do mi ni

sus ci tans a xer va i no pem

e de ster core e ri gens pau pe rē eri gens

pau pe rē lau da se pu e ri Do mi nū

lau dare no mē Do mi ni ut collo cet e

um cum prin ci pi bus laudare pae ri -
 Do mi num lauda re no me Do mi ni
 Qui habitare facis
 47 pausa

Tutti

lo ri a pa tri et fi - li - o et pi -
 ri tui sanc - - to si cus eras in prin -
 ci pi o et nunc et semper et nunc et semper
 et in se cu la se cu lo rum ame a - -
 - me ame a - - me ::

Tenor 2.

Handwritten musical notation on a five-line staff. The lyrics "auda se pu e ri Do mi nū" are written below the notes. The music is in a treble clef with a key signature of one sharp (F#) and a 3/2 time signature.

Handwritten musical notation on a five-line staff. The lyrics "Laudate no mē Do mi ni Lau da se pu e ri" are written below the notes. A measure number "27." is written above the staff.

Handwritten musical notation on a five-line staff. The lyrics "Do mi nū Lau da te no mē Do mi ni" are written below the notes. A measure number "66" is written to the right of the staff.

Handwritten musical notation on a five-line staff. The lyrics "Lucei tans a terra" are written below the notes. Measure numbers "15." and "10." are written above the staff.

Handwritten musical notation on a five-line staff. The lyrics "i noxem Lau da se pu e ri Do mi nū Lau da" are written below the notes.

Handwritten musical notation on a five-line staff. The lyrics "se no mē Do mi ni col lo cet eum cum prin-" are written below the notes. An "air" marking is written above the staff.

Handwritten musical notation on a five-line staff. The lyrics "cipi bus po puli sui" are written below the notes. A measure number "11" is written below the staff.

Handwritten musical notation on a five-line staff. The lyrics "Laudate pu e ri Do mi ni Lau da te no mē" are written below the notes.

Handwritten musical notation on a five-line staff. The lyrics "Qui ha bitat in cae lis" are written below the notes. A measure number "47" and the word "pausa" are written below the staff.

Handwritten musical notation on a five-line staff. The lyrics "Do mi ni" are written below the notes.

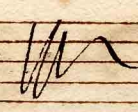
Succi

Handwritten musical score for a piece titled "Succi". The score is written on seven staves. The first six staves contain the main melody with Latin lyrics underneath. The seventh staff is a double bar line followed by a fermata and the word "mo" with a double bar line. The paper is aged and has some staining.

so ri a pa tri et fi li - o et
spi ri tu i sane - - - - - so si cus -
e rat in prin ci pi o
et nunc et sem - per et in -
se cu la se cu lo rum
mo mo

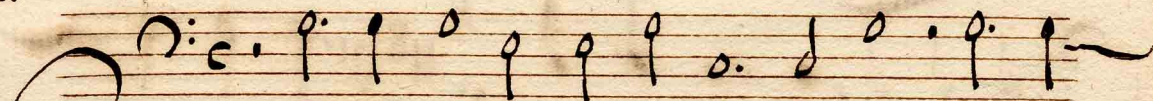
Basso 2.° Cho. à 10

auda se pu e ri Do mi nus
 Lau da se no me Do mi ni 27. Lau da se
 pu e ri Do mi nus Lau da se no me Do mi
 ni 45. solo ex cel - sus su per om nes gen -
 tes Do mi nus 16. 15. 2-10 sus ci tan s
 a ser va i no pem 15. Lau da se pu e ri Do mi
 nus Lau da se no me Do mi ni 23. ut col lo ces e
 um cu prim ei pi bus 25. Lau da se pu e ri
 Do mi nus Lau da se no me Do mi ni

Qui habitare facis 

47 pause.

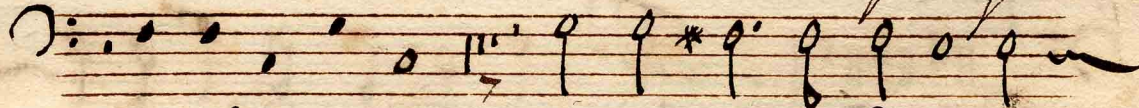
Sutti



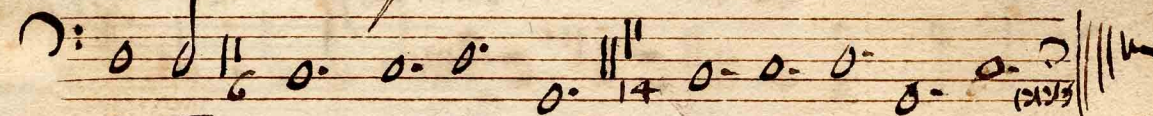
So ri a pa tri et fi - li o et spi -



ri tu i san cto sicut e ras in prin ci pio



et nunc et semper et in - se cu la se cu -



lor d a - - - - - me a - - - - - me . . . me



Violino

+

Handwritten musical score for Violino, consisting of ten staves of music. The notation includes various note values (quarter, eighth, sixteenth notes), rests, and accidentals (sharps). Performance markings such as *12.*, *13.*, *15.*, and *16.* are present. The score begins with a treble clef, a common time signature (C), and a 2/2 time signature. The lyrics "audate pueri" are written above the second staff. The manuscript shows signs of age, including foxing and irregular edges.

Handwritten musical notation on a single staff, featuring a treble clef, a key signature of one sharp (F#), and a common time signature (C). The notation includes various note values and rests, with a measure number '24.' written above the staff.

Handwritten musical notation on a single staff, featuring a treble clef and a common time signature (C). The notation includes various note values and rests.

Handwritten musical notation on a single staff, featuring a treble clef, a key signature of one sharp (F#), and a common time signature (C). The notation includes various note values and rests.

Handwritten musical notation on a single staff, featuring a treble clef and a common time signature (C). The notation includes various note values and rests, with a measure number '47.' written above the staff. The text 'Qui habitava in Caele' is written below the staff.

Handwritten musical notation on a single staff, featuring a treble clef and a common time signature (C). The notation includes various note values and rests. The text 'Sicut' is written to the left of the staff.

Handwritten musical notation on a single staff, featuring a treble clef and a common time signature (C). The notation includes various note values and rests, with a measure number '2' written below the staff. The text 'Gloria' is written above the staff.

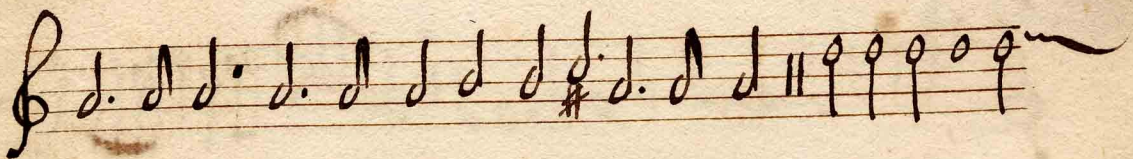
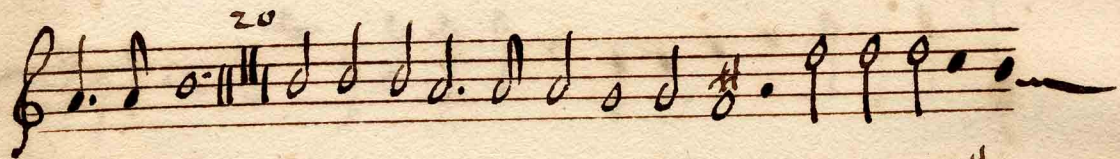
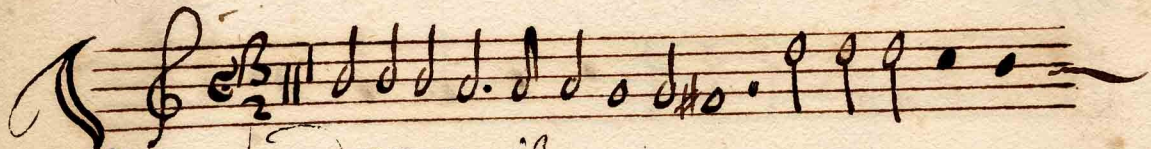
Handwritten musical notation on a single staff, featuring a treble clef and a common time signature (C). The notation includes various note values and rests.

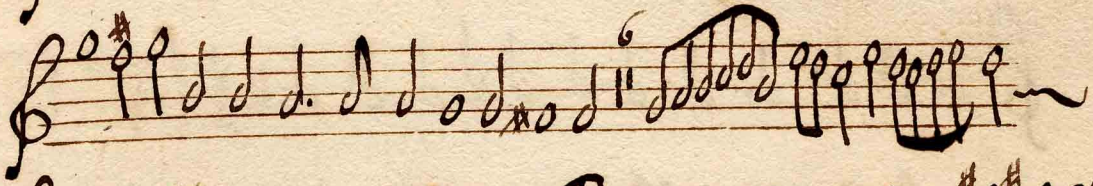
Handwritten musical notation on a single staff, featuring a treble clef and a common time signature (C). The notation includes various note values and rests, with a key signature change to one sharp (F#) indicated by a sharp sign at the end of the staff.

Handwritten musical notation on a single staff, featuring a treble clef and a common time signature (C). The notation includes various note values and rests, with a key signature change to one sharp (F#) indicated by a sharp sign at the beginning of the staff.

Handwritten musical notation on a single staff, featuring a treble clef and a common time signature (C). The notation includes various note values and rests.

Violino





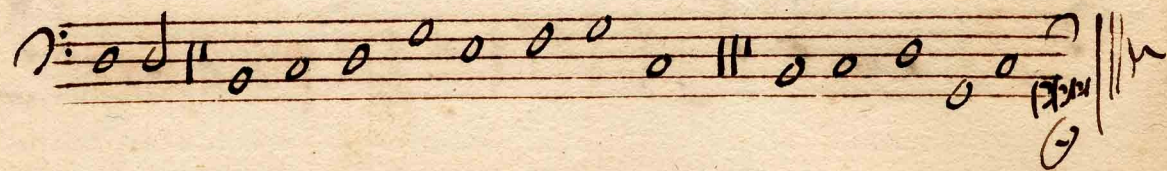
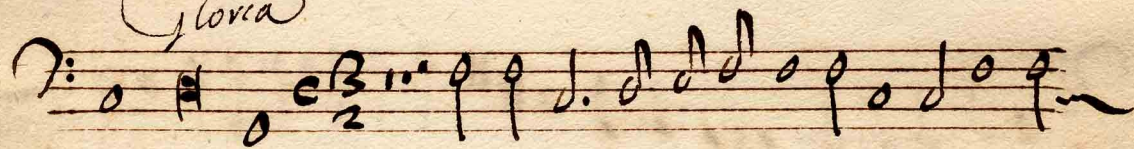
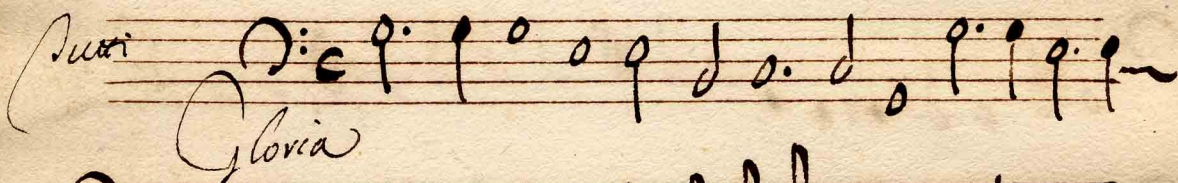
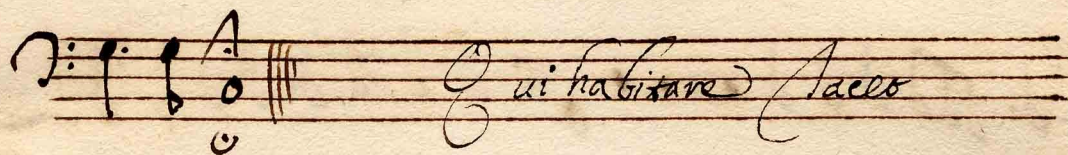
Violone

12.

audate pueri Domini

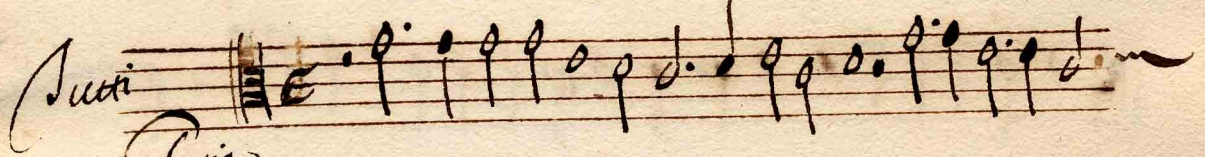
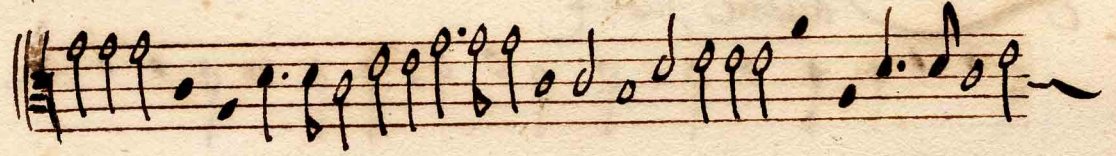
27

15

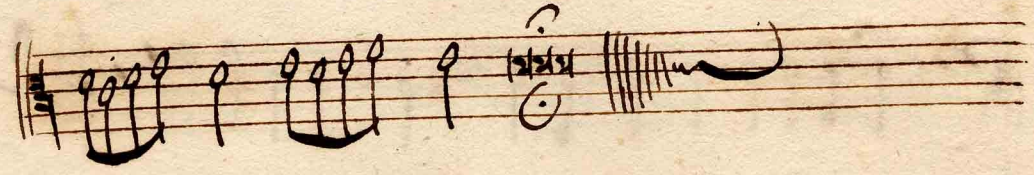
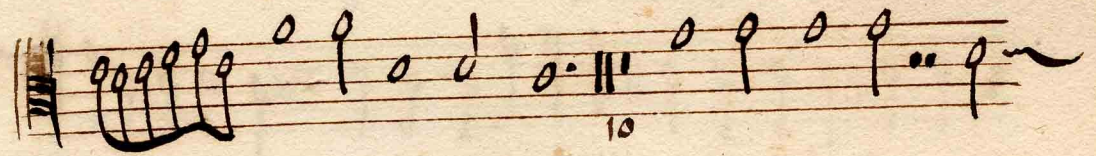
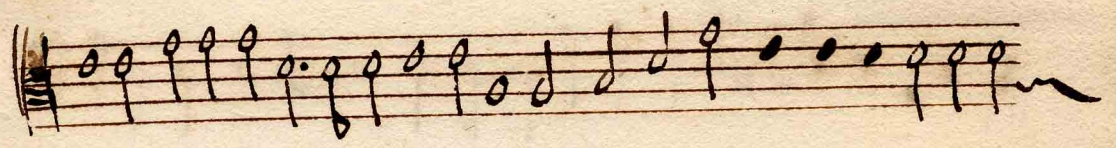


Alto Trombone. 2. Floro

audate pueri

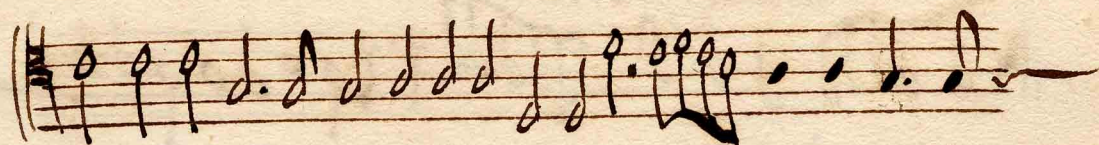


Gloria

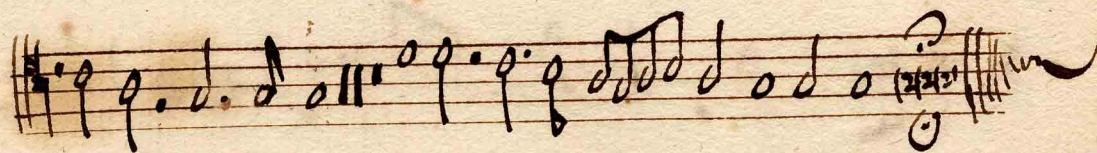


Trombone Tenore

Handwritten musical score for Trombone Tenore, consisting of ten staves. The music is written in a treble clef with a key signature of one sharp (F#) and a time signature of 3/2. The score includes various musical notations such as notes, rests, and bar lines. Performance markings include *audace pueri.* written above the second staff, and numerical markings 9, 13, and 15 below the staves, likely indicating measure numbers or rehearsal points. The paper is aged and shows some staining.



Gloria



23.9

Organo

Laudate pueri. à 10. Di Fi. Fi.

Handwritten musical score for organ, consisting of eight staves of music. The score includes various performance instructions and markings:

- Staff 1:** *1. P.^o solo* (written above the staff), *audate pueri* (written below the staff).
- Staff 2:** *audate pueri* (written below the staff), *76* (written above the staff).
- Staff 3:** *pueri laudate* (written below the staff), *76* (written above the staff).
- Staff 4:** *2. ritomo* (written above the staff), *audate* (written below the staff), *76* (written above the staff).
- Staff 5:** *audate* (written below the staff), *76* (written above the staff).
- Staff 6:** *simfo* (written above the staff), *audate* (written below the staff), *76* (written above the staff).
- Staff 7:** *simfo* (written above the staff), *76* (written above the staff).
- Staff 8:** *A. 2.* (written above the staff), *76* (written above the staff).

43 *inf.* 76 B.P.^o 43
excelsus

B2. 32. 43 2.C

43 *inf.* 76 B.P.^o 43
Excelsus

43 *Att.* 76 43 B.P.^o
A.1. et humilis

2.C 43 43 *inf.*

suoi in celo
A.1. 2.C

76 76 76
suoi

76 *inf.* 2.C. laudare

A.D. B. C. Tho. B.P. A.P.

simf. 76

pueri 76

simf. 2. c. *pueri* 76

2. 76

56 7 43

43

43 *pueri* 46

Gloria 349 2

Handwritten musical notation on a single staff. The notation includes a treble clef, a key signature of one sharp (F#), and a common time signature (C). The music consists of a sequence of notes, including quarter and eighth notes, with a fermata over the final note. Above the staff, the dynamic marking *43* is written. Below the staff, the dynamic marking *simf.* is written.

Handwritten musical notation on a single staff. The notation includes a treble clef, a key signature of one sharp (F#), and a common time signature (C). The music consists of a sequence of notes, including quarter and eighth notes, with a fermata over the final note. Above the staff, the dynamic marking *43* is written. Below the staff, the dynamic marking *simf.* is written.

Handwritten musical notation on a single staff. The notation includes a treble clef, a key signature of one sharp (F#), and a common time signature (C). The music consists of a sequence of notes, including quarter and eighth notes, with a fermata over the final note. Above the staff, the dynamic marking *cresc.* is written. Below the staff, the dynamic marking *simf.* is written.

Handwritten musical notation on a single staff. The notation includes a treble clef, a key signature of one sharp (F#), and a common time signature (C). The music consists of a sequence of notes, including quarter and eighth notes, with a fermata over the final note. Above the staff, the dynamic marking *And.* is written. Below the staff, the dynamic marking *43* is written.

Handwritten musical notation on a single staff. The notation includes a treble clef, a key signature of one sharp (F#), and a common time signature (C). The music consists of a sequence of notes, including quarter and eighth notes, with a fermata over the final note. Above the staff, the dynamic marking *43* is written. Below the staff, the dynamic marking *simf.* is written.

Five empty musical staves, each consisting of five horizontal lines, arranged vertically on the page.

~~43:14~~

23:9

Laudate pueri dominum

a

2 Cant.

4 Instr.

R

