

S t ex ultavit spi ri tus meus in

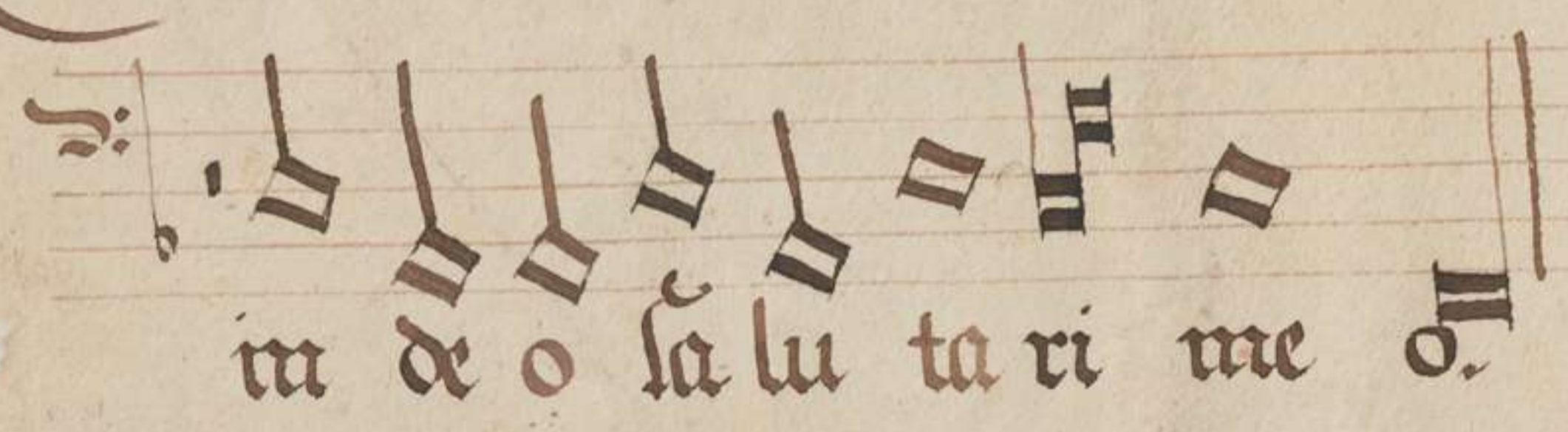
BIBLIOTHECA
REGIA
MONACENSIS



de o sa lu ta ri me o.



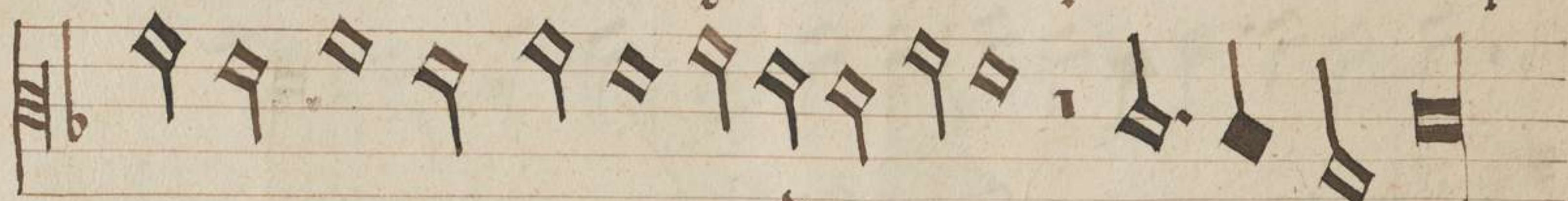
S t ex ultavit spi ri tus meus



in de o sa lu ta ri me o.



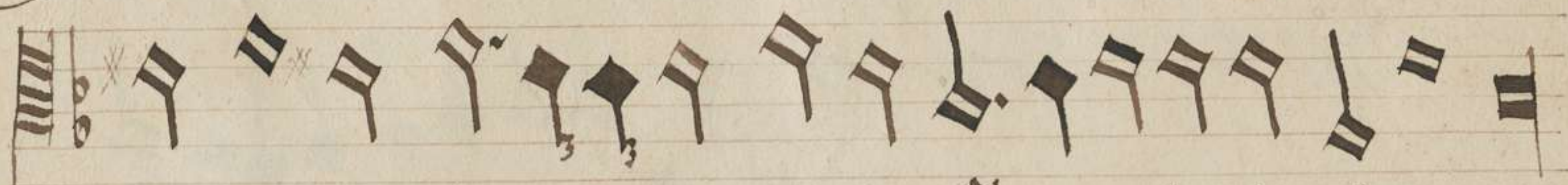
t ex ul ta uit spi ritus meus spi,



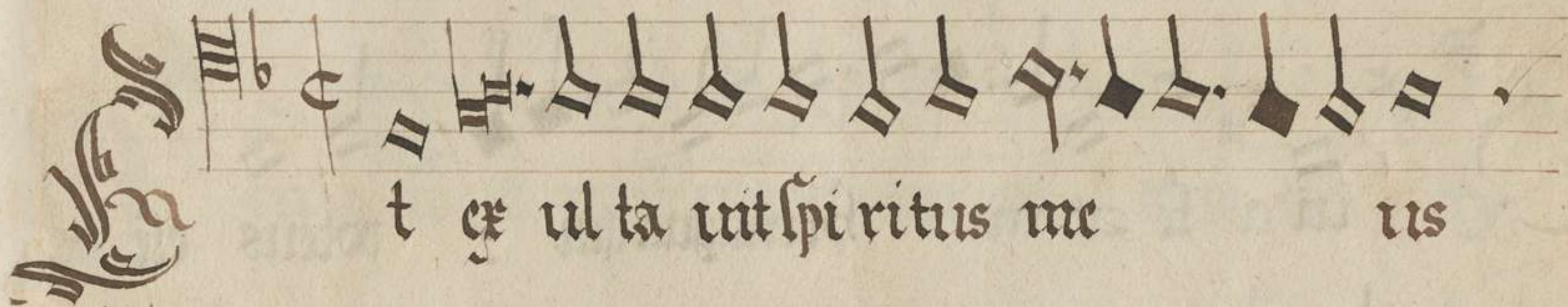
ritus meus in de o sa lu ta ri me o



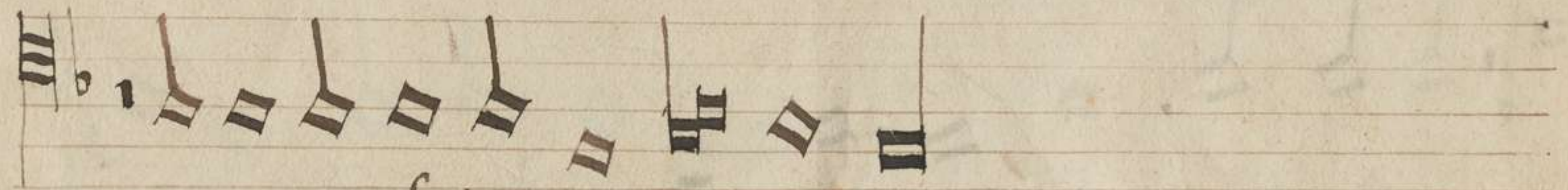
t ex ul ta uit spi ritus me us spi ri,



tus meus in de o sa lu ta ri me o



t ex ul ta uit spi ritus me us



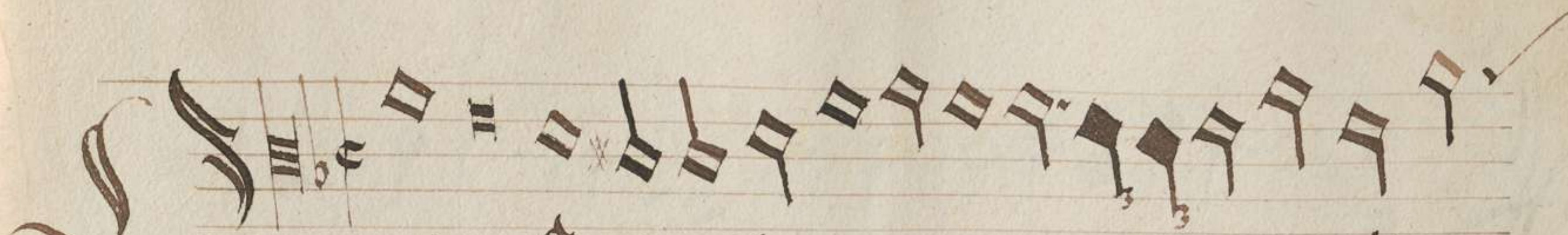
in de o sa lu ta ri me o

Q uia fe cit mihi magna

qui potens est et sanctum nomen eius.

Q uia fe cit mi hi magna qui potens est

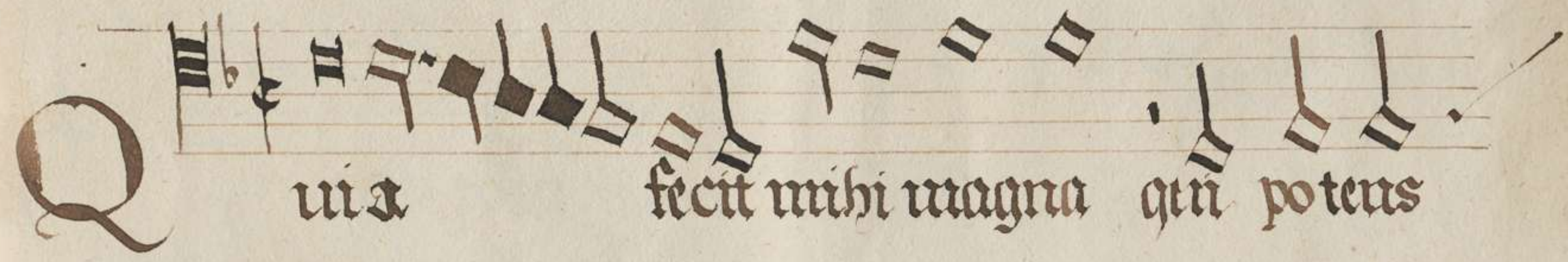
et sanctum nomen eius



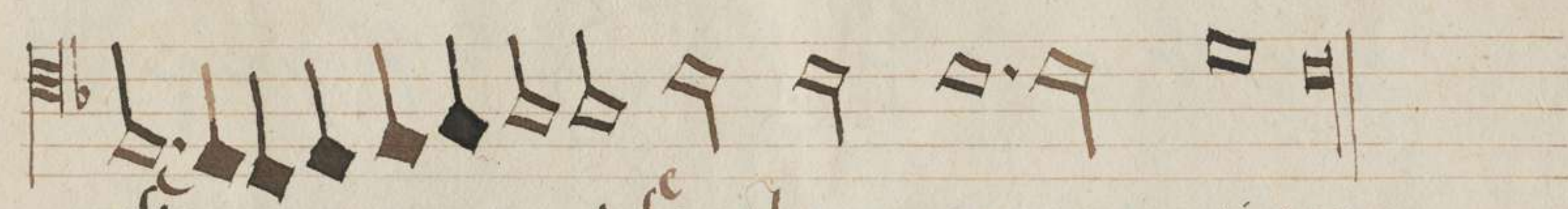
uia fecit mihi magna qui potens est et



sanctum nomen eius



uia fecit mihi magna qui potens



est et sanctum nomen eius



uia fecit mihi magna qui potens est et



sanctum nomen eius

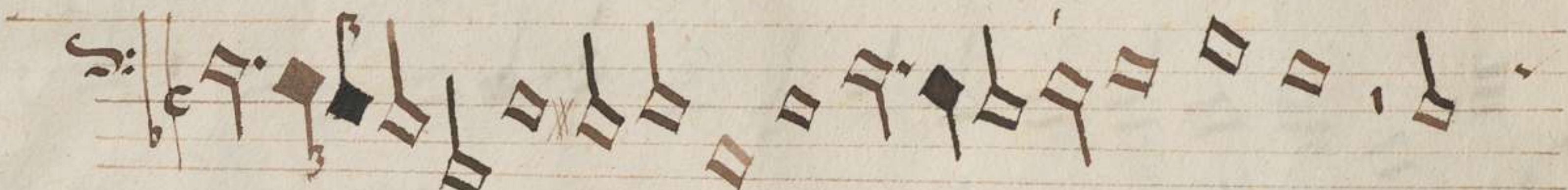
Handwritten decorative flourish



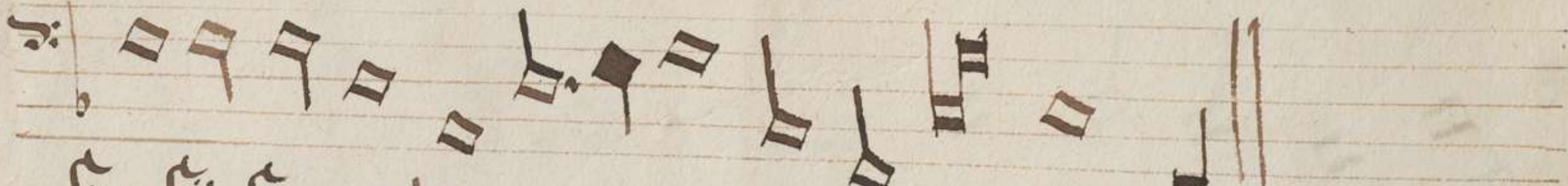
e cit potenti am in brachio su o



disperlit su per hos men te cor dis su i



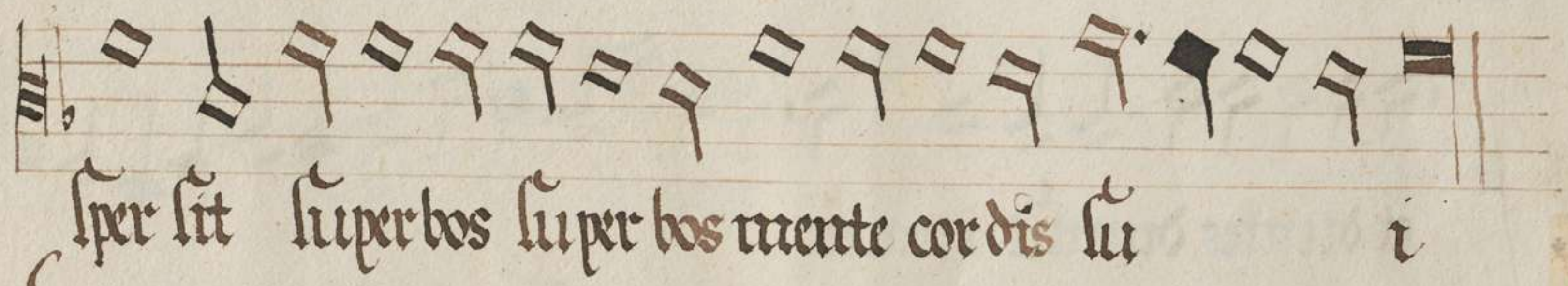
e cit potenti am in brachi o suo di



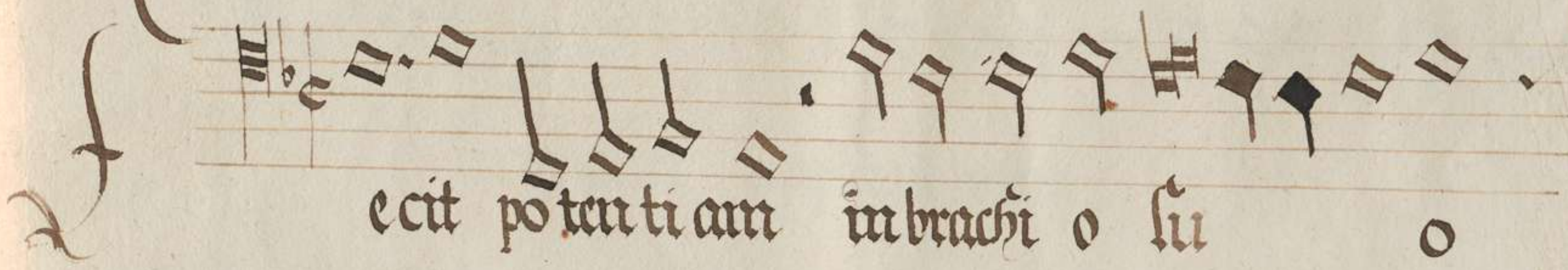
per lit su per hos men te cordis su



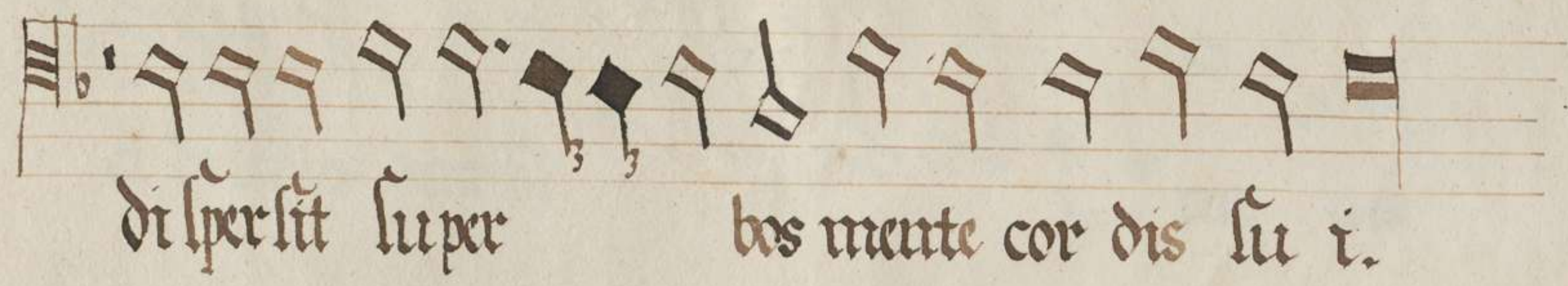
ecit po ten tiam in brachi o su o di



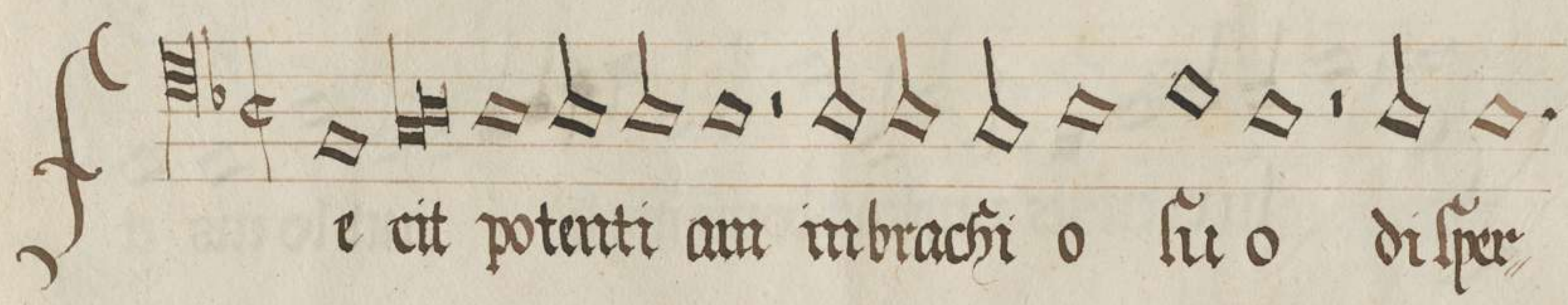
per sit super bos super bos mente cordis su i



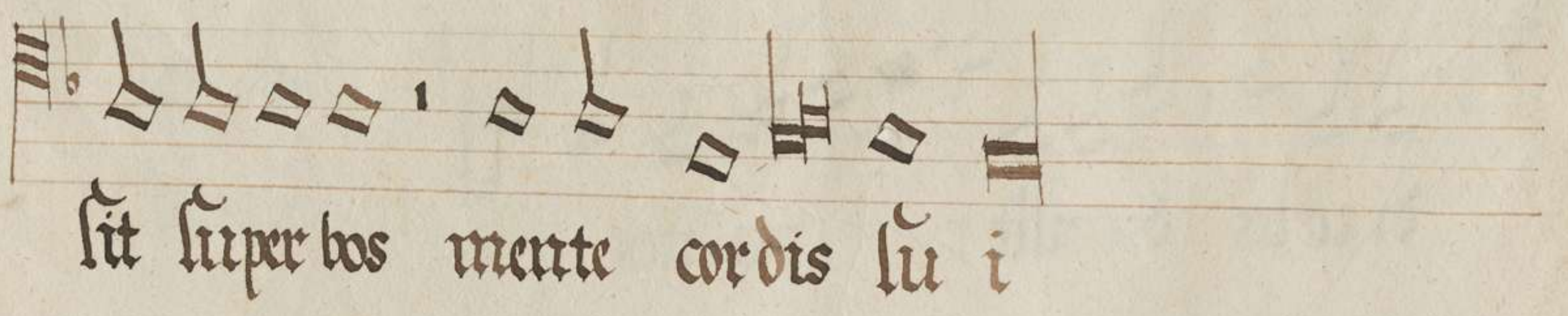
ecit po ten ti am in brachi o su o



di per sit super bos mente cor dis su i.



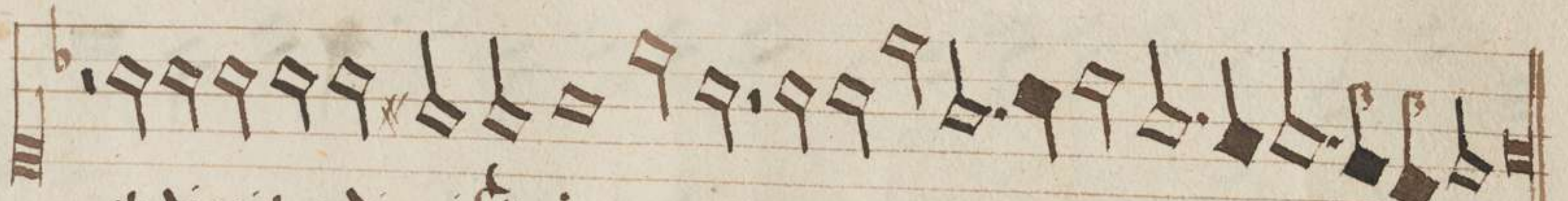
ecit po tenti am in brachi o su o di per



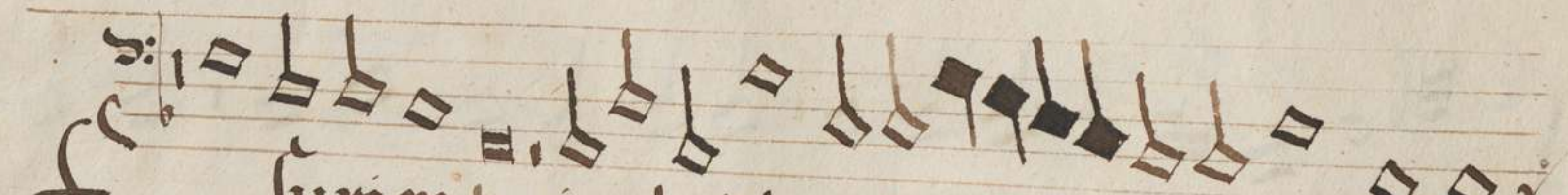
sit super bos mente cordis su i



Su ri entes implevit bo nis



et diuites dimisit inanes



Su ri entes implevit bonis imple vit bonis et



di uites dimisit i nanes

A large, ornate initial 'A' in black ink with red and blue filigree. The musical staff contains square neumes on a four-line red staff, starting with a C-clef and a key signature of one flat. The notes are mostly quarter and eighth notes.

su ri en tes implevit bonis et di ui tes

A musical staff with square neumes, continuing the melody from the previous staff. It ends with a double bar line.

di mi sit ma nes

A large, ornate initial 'S' in black ink with red and blue filigree. The musical staff contains square neumes on a four-line red staff, starting with a C-clef and a key signature of one flat.

su ri entes implevit bonis

A musical staff with square neumes, continuing the melody. It ends with a double bar line.

et di ui tes dimisit ma nes.

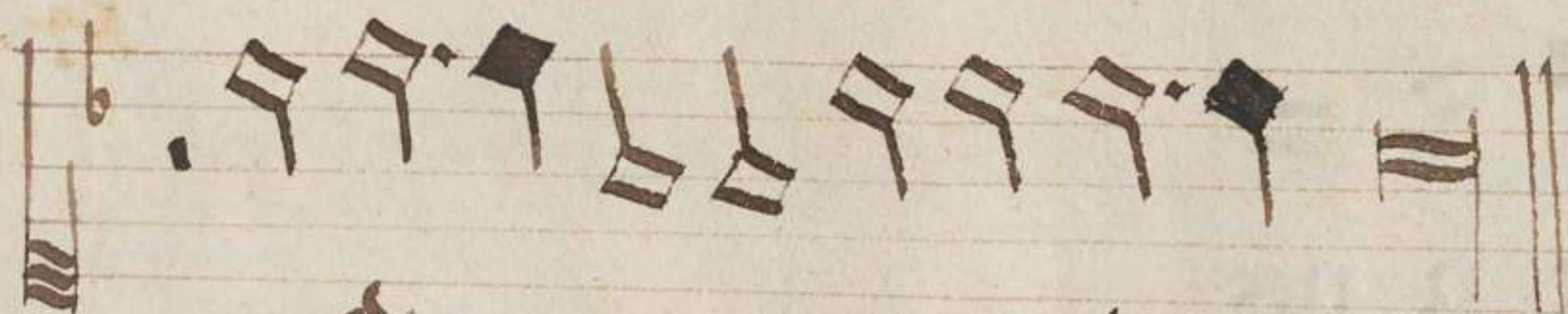
A large, ornate initial 'S' in black ink with red and blue filigree. The musical staff contains square neumes on a four-line red staff, starting with a C-clef and a key signature of one flat.

su ri en tes implevit bonis et di ui tes

A musical staff with square neumes, continuing the melody. It ends with a double bar line.

di mi sit ma nes

Sicut locutus est ad patres nostros Abraham



et semini eius in secula.

Sicut locutus est ad patres nostros Abraham et

semini eius in secula.



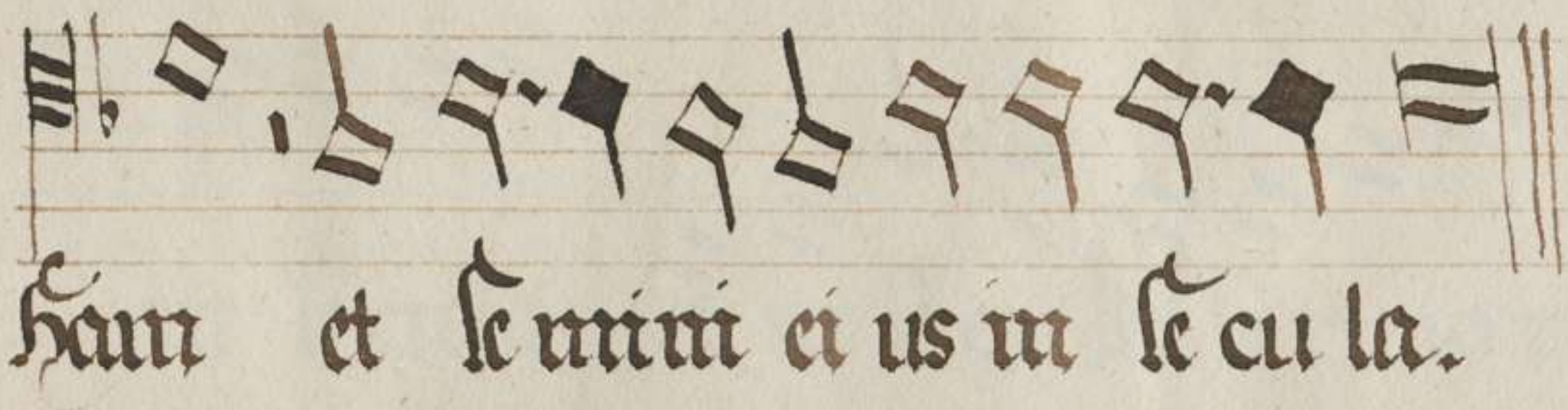
Si cut lo cutus est ad patres



nostros Abraham et semini eius in secula



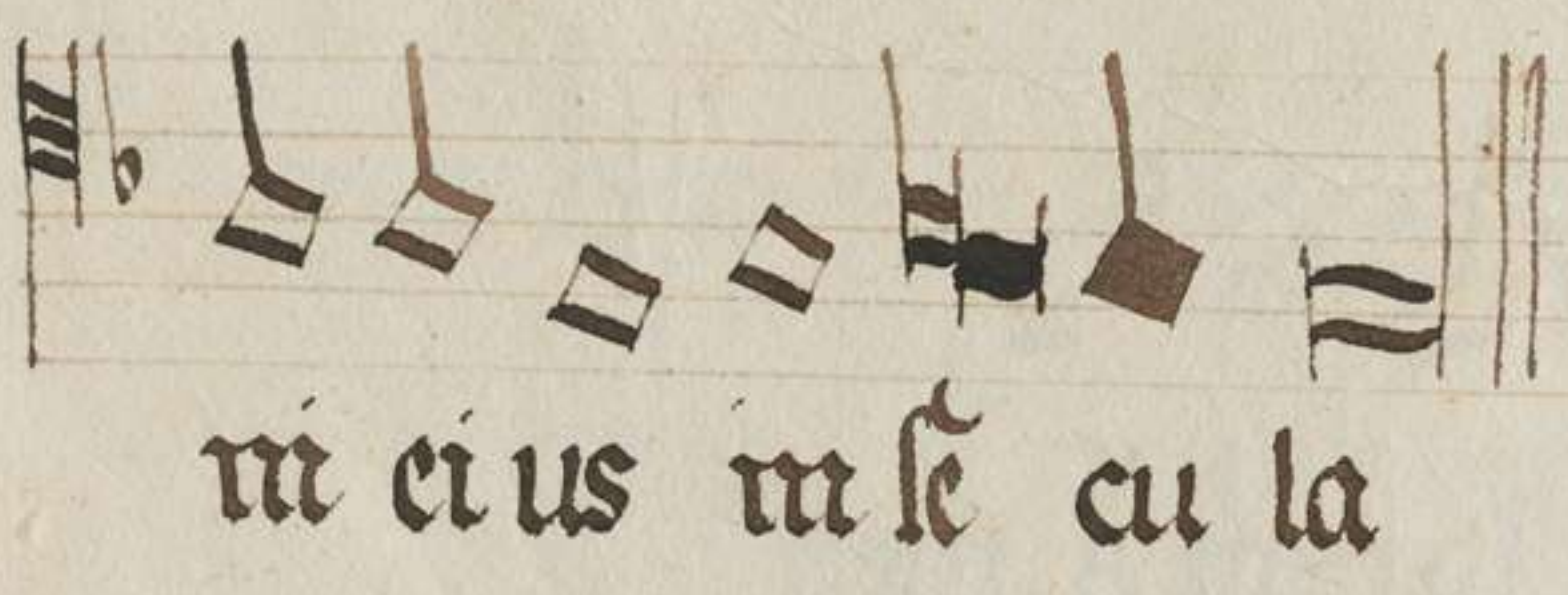
Si cut locutus est ad patres nostros A bra



ham et semini eius in secula.



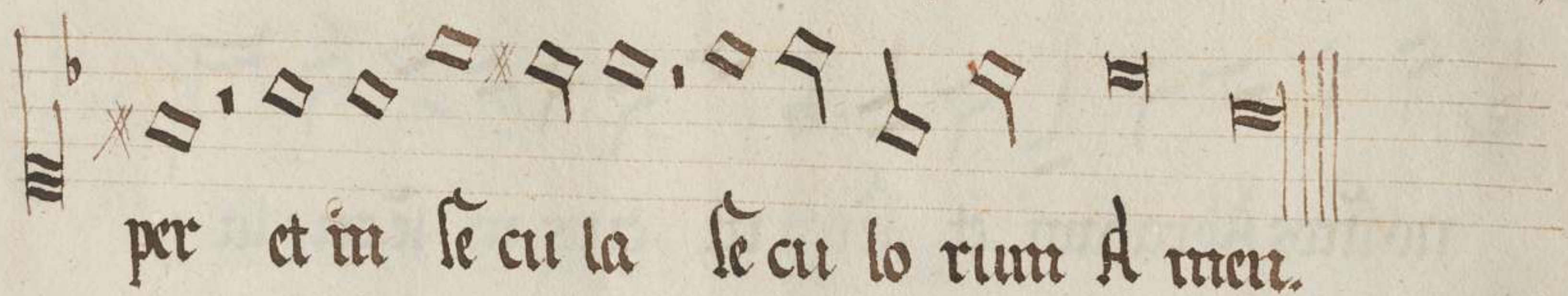
Si cut locutus est ad patres nostros Abraham et semini



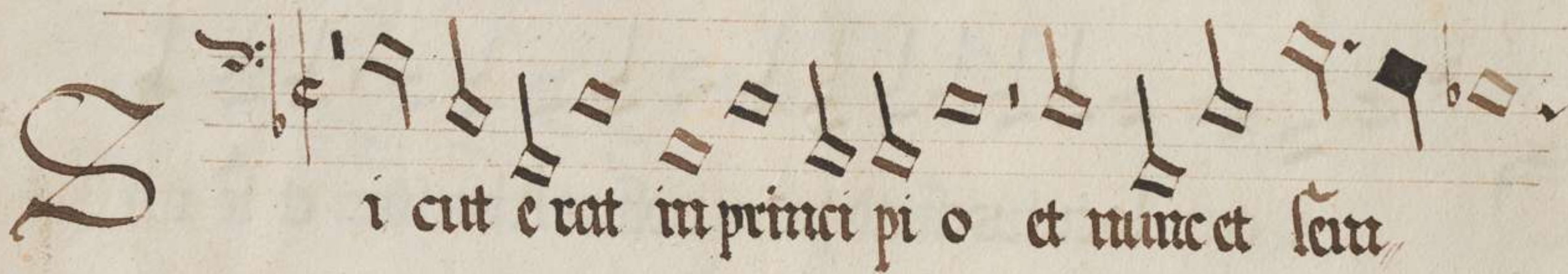
ni eius in secula



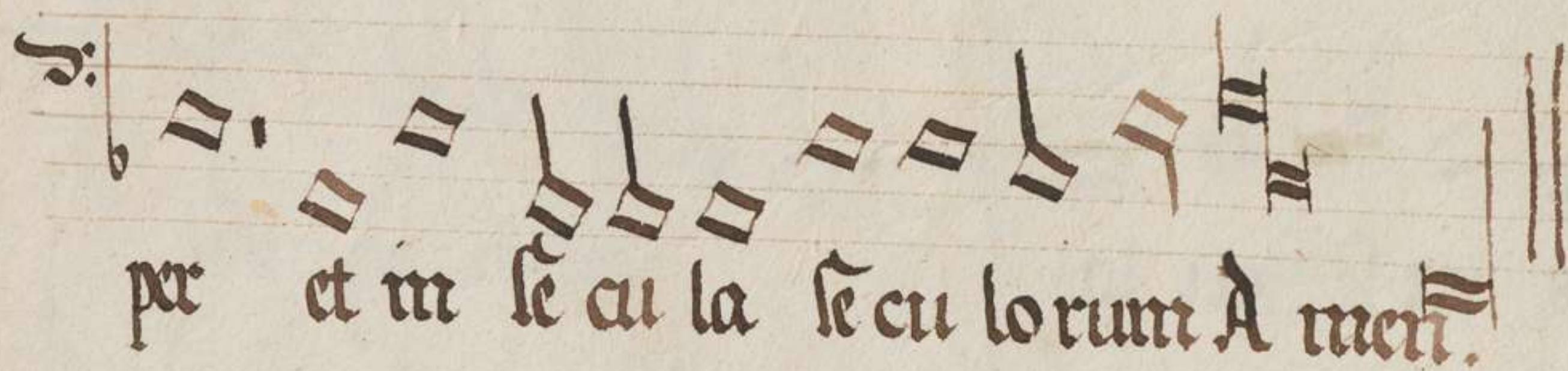
Sicut erat in principiis et nuncet semper



per et in secula seculorum Amen.



Sicut erat in principiis et nuncet semper



per et in secula seculorum Amen.

icut e rat in principi o et nunct sem

per et in se cula se cu lo rum A me.

icut e rat in princi pi o et nunct semper et

in se cula et in se cu la se cu lo rum A men.

icut e rat in principio et nunct sem per et

in se cula se cu lo rum A men.